



**RCT**  
Powered by Epiroc

# INDUSTRIAL PRODUCT RANGE

Logistics | Transport | Civil | Commercial



# contents

- 4 SmarTrack® Fleet Management
- 5 Speed Gates
- 6 Speed Limiters
- 6 Machine Speed Zoning
- 7 Engine Protection System
- 7 Directional Change Controller
- 8 Pedestrian Alert System
- 9 Rear Detection Systems
- 10 Fork Level Assist
- 10 Laser Alignment Line Light
- 11 Sequential Seat Belt Controllers
- 12 SmartLight AwarenessTechnology
  - Arc Light LED
  - Line Light LED
  - 'SmartSpot' Warning Light
  - SmartArrow LED
  - SmartBeacon Range
  - Colour Change LED Mini Light Bar
  - SmartBeam Laser Line Light
- 15 LED Work Lights
- 16 Camera Vision Systems
  - Rear Vision Camera Systems
  - Maxi Vision® Mast Camera Kit
  - Compact 2 Camera DVR Recorders
  - DVR Wireless Camera Kits
- 18 RCT Online Parts Catalogue
- 19 Specialised Auto Electrical



# SmarTrack® Fleet Management

Fleet management systems are playing an increasingly vital role in optimising materials handling operations and increasing bottom line profits for companies worldwide. RCT is meeting this demand with its fleet management solution, SmarTrack® Global.

The innovative solution provides relevant, customised information in real-time to employees at every level of the supply chain. The system can be installed on a diverse range of industrial equipment, regardless of make or model.

SmarTrack® Global can be used anywhere in the world with its multilingual user interface. It delivers machine data from multiple sites; all under one platform, any time, any where. SmarTrack® Global streamlines operations and simplifies the industrial fleet management process.

It empowers management with information about machine and operator activity, resulting in smarter, profit-boosting decisions.

## Features:

- ✓ **Connectivity** | 4G or Wi-Fi
- ✓ **Email Alerts** | Checklist, Impact, Over Speed, Over Weight, Seat, Buckle and more
- ✓ **Message of the Day** | Configure a message to show on the operator display such as "Watch for pedestrians", a different message available for each day
- ✓ **Multi-Lingual** | Operator display and website options
- ✓ **GPS Location** | And GPS Tagging of certain events
- ✓ **GPS Zoning** | Use a dedicated output to control a speed-limiter when moving between zones
- ✓ **GPS Zoning** | Use a dedicated output to control a speed-limiter when moving between zones
- ✓ **Machine Utilisation** | Able to be shown by multiple inputs from travel, hydraulic pump
- ✓ **Battery Voltage Monitoring**
- ✓ **Critical Output** | Critical Output relay available to interface with machine and accessories activated by critical events such as checklist, impact, and excess idle

[view online](#)



# Speed Gates

## Easy Speed Control.

The Muirhead® Speed Gates are a system designed to improve safety for company equipment and personnel across materials handling operations.

The technology can be applied to warehouses to safely control forklift speed when entering and exiting through doorways.

Speed Gates consist of a gate mounted at each doorway. A Machine Location Tag is installed to the mobile equipment which detects when the piece of equipment has travelled through a gate and signals a Muirhead® Speed Limiter to select the predetermined maximum speed allowed in that specific area.

The Speed Gates can be configured to control up to four separate speeds across a single site. To enable the control of the machine speed a Machine Location Tag must be interfaced with a Muirhead® Speed Limiter and may also be interfaced into any 12/24 VDC input in third party devices that may already have the ability to control the speed of the equipment.

## Features:

- ✓ Speed can be controlled throughout a building with Speed Gates at each doorway.
- ✓ The system components can operate in a variety of environmental conditions.
- ✓ Easy installation and no ongoing maintenance required.

[view online](#)



# Speed Limiters

## For greater control in reducing incidents

With speed being one of the major contributors to forklift accidents, the Muirhead® Forklift Speed Limiter provides a safe reliable solution for controlling speed in most forklift applications.

The system can be fitted to both cable and/or electronic throttle systems and is designed to interface into machine wiring either as a plug and play or following simple instructions.

The Forklift Speed Limiter has a built-in safety circuit that prevents overspeed in the event of faulty speed signal or system disconnection.

RCT design forklift speed limiters to suit a wide variety of machine types and models.

The Muirhead® Forklift Speed Limiter can also interface into any of the RCT speed zone systems to enhance the speed control on your site.

### Features:

- ✓ Increases workplace and forklift safety.
- ✓ Reduces speed related injuries
- ✓ Reduces fuel, running and maintenance costs
- ✓ Extends vehicle service life
- ✓ Assists in maintaining OHS procedures
- ✓ Secure speed programming

[view online](#)



# Machine Speed Zoning

## Keeps you & machine safe with control

The Muirhead® GPS Zone Controller is the latest in machine zone and location solution and is ideally suited for large outdoor sites where zones can be set to slow machines down in hazardous areas, or around buildings to slow the machine down before it enters a building.

With up to 50 zones and 4 different outputs, the GPS Zone Controller will automatically change machine speed as it passes between zones.

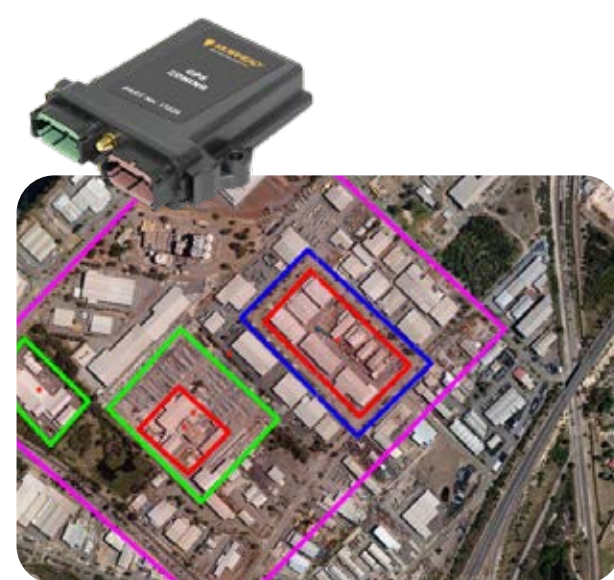
The zones are configured by the Site Administrator on the SmarTrack® website.

The systems uses GPS Technology and is suitable for sites that require slow speed inside buildings and higher speeds outside in open areas.

### Features

- ✓ Suits larger 'open' sites
- ✓ Up to 4 outputs and 50 zones per site
- ✓ Low on-going cost
- ✓ Flexible - easy to change zone areas
- ✓ IP65 rated
- ✓ Input voltage for device 8-32 VDC
- ✓ Machine defaults to low speed if GPS signal is lost
- ✓ Zone adjustment through user friendly interface

[view online](#)



# Engine Protection System

## Monitoring critical engine functions

The Muirhead® Engine Protection system offers engine protection for machines by monitoring critical engine functions such as oil pressure, coolant level and coolant temperature.

The system pre-warns the operator of critical operating conditions prior to the onset of engine failure. This allows the operator to take action to reduce premature engine failure, damage and costly repairs to the equipment.

The system provides both an audible and visual warning and incorporates additional outputs for return to idle or shutdown modes.

Compact in design and easy to install, the engine protection system is an effective tool in the management of engine protection and engine maintenance for machines.

### Features & Benefits

- ✓ Monitors critical engine functions
- ✓ Easy diagnosis of engine problems
- ✓ User friendly display
- ✓ Customised electronic circuitry
- ✓ Audible and visual warnings
- ✓ Australian made and tested
- ✓ Universal applications
- ✓ Multi voltage applications
- ✓ Tamper proof
- ✓ Guards against engine failure
- ✓ Reduces costly engine repairs
- ✓ Reduces operator responsibility
- ✓ Can be customised to suit machine type and operator requirements

[view online](#)



# Directional Change Controller

## Reduce machine wear and tear

The Muirhead® Directional Change Controller (DCC) is designed to help reduce excessive tyre wear, transmission damage, damage to cargo and unsightly tyre marks that can be the result of harsh gear changes.

By sensing the machine ground speed and gear selection, the DCC will inhibit a change of machine direction unless the machine has slowed down to a pre-set threshold whereby the opposite gear can then be selected.

### Speed Sensor

The DCC senses the machine speed.

### Gear Sensor

The controller senses when forward and reverse gears have been selected.

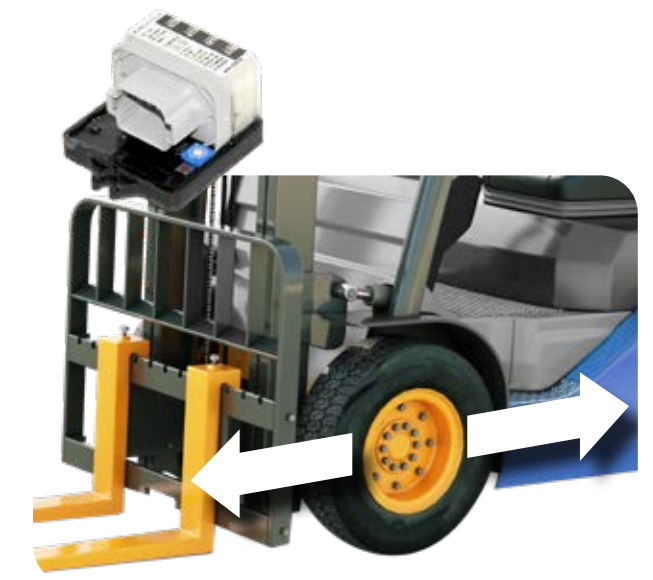
### Gear Lockout

The DCC will neutralise the directional gear change of the machine until it slows down to reach the pre-set threshold whereby the opposite gear can be selected.

### Features

- ✓ Reduce excessive tyre wear
- ✓ Reduce excessive transmission damage
- ✓ Reduce excessive tyre marks
- ✓ Reduces unsafe driving practices
- ✓ Compatible with most 12 V and 24 V machines that use electric gear shifts
- ✓ Compatible with negative or positive switching via configuration settings
- ✓ Configurable gear change threshold – can be set from 0 KMH to any speed

[view online](#)





# Pedestrian Alert System

## For greater control in reducing incidents

RCT introduces the AusProTec™ Pedestrian Alert System to ensure the safety of site personnel. This advanced driver assistance system employs sophisticated Artificial Intelligence (AI) algorithms that can detect human-like forms in the camera's field of view.

This advanced solution provides machine operators with clear views of their vehicle's front, side, and rear and automatically provides audio and visual alerts to prevent collisions between vehicles and nearby pedestrians.

The Pedestrian Alert System can also be set to automatically activate additional safety systems such as speed limiters, extra warning lights/alarms, or to register in DVRs or fleet management systems.

The product has a wide detection area with a range of 0.5m to 12m (140° viewing angle) and may differentiate between objects and pedestrians. The solution is unique as its HD screen categorises site personnel within a 20-metre radius in red, amber and green fields while also providing an audible alarm. This feature provides drivers with more time to respond appropriately which enables safer driving practices.

The AusProTec™ Pedestrian Alert System improves operator confidence through increased visibility which in turn results in increased productivity. The system allows up to three cameras to be connected to the monitor at any time and can be configured to display certain camera views depending on machine gear selections. The durable camera can withstand the toughest conditions, making it ideal for mobile machines operating in the harshest environments. The optimal performance of the camera is ensured at all times thanks to its AI functionality which can be calibrated simply by using Wi-Fi, the camera's built-in app or via USB.

The AusProTec™ Pedestrian Alert System is the most reliable way to safely manage machine-to-pedestrian interactions and prevent serious injuries.

[view online](#)

### Features

- ✓ 1 to 4 cameras kits available
- ✓ Easy to install
- ✓ Rear view detection distance of 0.5m – 20m
- ✓ Full HD 1080p resolution
- ✓ Configurable visual detection zones
- ✓ Audible alarm output (12V / 250mA) to trigger other devices including alarms, lights and recorders

*NOTE - This product is not (and should not be seen as) a substitute for human control, care and vigilance. Users should not overly rely or depend on the product but to use the product as an additional aid while exercising the same level of care and skill in operating the vehicle or machine.*

### Specifications

|                              |                               |
|------------------------------|-------------------------------|
| Resolution                   | 1920 x 1080p                  |
| Viewing Angle                | 140°                          |
| Angle Range                  | 0.5m – 20m (1.64ft – 65.61ft) |
| Voltage                      | 10 – 32VDC                    |
| IP Rating                    | IP69K                         |
| Vibration / Shock Resistance | 5.9G                          |
| Communication Interface      | 0.5m – 20m (1.64ft – 65.61ft) |
| Operating Temperature        | -20°C – 70°C (-4°F – 158°F)   |
| Storage Temperature          | 30°C – 80°C (-22°F – 176°F)   |
| Minimum Lux                  | 0.01lux                       |



# Rear Detection System

## Be aware, be smart, be safe

The Sentry Rear Detection kit is specially designed for lift trucks and has the ability to detect objects from the face of the radar up to 30m (98').

The system accurately identifies the location and velocity of up to 16 people or objects simultaneously and built to withstand the harshest of conditions.

With built-in, fail-safe alerts that notify the operator of radar blockage or communication issues, operators and fleet managers can be sure that they are working with one of the most reliable object detection systems available.

The Industrial Sentry Rear Detection Kit is a plug-and-play, robust radar solution with a pre-configured sensor range. This kit comes with a preset 4.5m x 2m (14.7ft x 6.5ft) sensor, in-cab LED display, 7.5m (24.6ft) harness and 90-degree mounting bracket.

### Features

- ✓ Connects to reverse lights for power
- ✓ Pre-configured range: 4.5m x 2m (14.7ft x 6.5ft)  
Field programmable via Sentry Programming Unit
- ✓ Built to meet rugged J1455 specifications
- ✓ Utilises standard CAN communication protocols

[view online](#)

### Specifications

|                       |   |
|-----------------------|---|
| Frequency             | 24Ghz   |
| Current Draw          | Less than 0.25A                               |
| Operating Temperature | -40°C to 85°C (-40°F to 185°F)                |
| Sensor Dimensions     | 12.4cm x 10.3cm x 3.25cm (4.88" x 4" x 1.28") |
| Display Dimensions    | 2.54cm x 5.84cm x 5.08cm (1" x 2.3" x 2")     |
| IP Rating             | IP68 - IP69K                                  |
| Pre-configured Range  | 4.5m x 2m (14.7ft x 6.5ft)                    |

Part no. 16055





# Fork Level Assist

Improve safety, productivity and eliminate damage

Even the best operators can make mistakes judging the tilt of their forks when entering or exiting pallets or stacking products.

The AusProTec™ Forklift Level Assist can combat this issue, regardless of the level of operator, by indicating the level of the forklift tines on a clear and easy-to-read display.

The main cause of product, rack and equipment damage is from forks being tilted at the wrong angle. If the forks are not level, drivers can spear product, damage racks or splinter pallets, especially if product is not stacked evenly which all results in costly damage. The Forklift Level Assist is a solution that will quickly pay for itself by reducing these damages.

Available in counterbalance or reach truck models. Extreme condition models available upon request.

### Features

- ✓ Easy to install – Less than 1 minute
- ✓ Accurate within 0.25 of one degree
- ✓ Environmentally sealed – IP67 rated with CE Certification
- ✓ Adapts to bent or uneven forks
- ✓ Not permanently fixed to the forklift mast – No drilling required
- ✓ Motion activated – No on / off switch
- ✓ Easy-to-read display

### Specifications

|                      |  |
|----------------------|--|
| Certifications       | CE, ISO 9000/9001  |
| Rating               | IP67 rated   |
| Working Temperature  | -40° to 50°C (-40° to 120°F)                             |
| Batteries            | Uses 2 x "D" size Batteries. 12 to 18 month battery life |
| Accuracy             | Accurate to 0.25 of one degree                           |
| Warranty             | 2 years  |
| Pre-configured Range | 4.5m x 2m (14.7ft x 6.5ft)                               |

Part no. 16717

[view online](#)



# Laser Alignment Line Light

Guide fork tynes accurately

Using an integrated class II laser and a rechargeable battery pack, the Forklift Tyne Alignment Light, uses a horizontal laser beam to assist forklift operators to guide fork tynes into pallets accurately. The horizontal laser beam provides a green line that projects at the position of the forklift tynes thus allowing easy tyne alignment. The rechargeable battery pack provides between 50-70 hours of operational time. The operator uses a remote control to turn the alignment light on and off.

### Features

- ✓ Class 2 laser technology
- ✓ Wavelength - 515 nm with integrated line generating lens Lifespan of 30,000 hours
- ✓ Battery life: 50 to 70 hours
- ✓ Light and compact
- ✓ EMC-CE compliant

### Specifications

|                       |                               |
|-----------------------|-------------------------------|
| Voltage               | 10 – 80 VDC                   |
| Power                 | <1mW (Green)                  |
| IP Rating             | IP65                          |
| LED Lifetime          | 30,000 hours                  |
| Operating Temperature | -20°C to 70°C (-4°F to 158°F) |
| Housing Material      | Diecast Aluminium             |
| Lens Material         | Polycarbonate                 |
| Battery Dimensions    | 230mm x 50mm x 30mm Laser     |
| Dimensions            | 100mm x 46mm x 40mm           |
| Battery Charger       | Included                      |
| Charger Type          | 240VAC Mains Power Pack       |
| Charge Time           | 8 Hours                       |

Part no. 16177

[view online](#)



# Sequential Seat Belt Controllers

For assisting operators

Operator safety is of paramount importance in any operation. Forklift operators neglecting to use a seatbelt are a hazard to both themselves and the operation.

To ensure that the forklift cannot be operated unless the seatbelt is securely fastened, RCT has developed the Muirhead® Sequential Seatbelt Controller.

The Sequential Seatbelt Controller (SSBC) is one of the most cost effective, smart technology, seat belt interlock systems in the forklift market.

The controller is programmed to assist operators in following the correct sequence when applying their seatbelt. The SSBC prevents operation if the correct sequence is not followed and will immobilise the machine. A visual warning alerts the operator 5 seconds before immobilisation.

The kits are designed to suit all forklifts and can also be customised for plug and play installation for specific brands.

Kits are supplied in low voltage 10 – 30 V and high voltage battery electric 36 – 48 volts. Kits can include seatbelt and buckle if required.

### Features

- ✓ Designed to meet Australian Standards
- ✓ Quick installation time
- ✓ Programmable engine shutdown time
- ✓ Fully sealed product to suit all conditions
- ✓ Improves operator safety
- ✓ Industry proven technology

[view online](#)





# SmartLight Awareness Technology

Be SAFE, Be SMART, Be SEEN



## Arc Light LED

Available in blue and red beam, these lights are specifically designed to project a visual caution mark onto the floor of your warehouse, alerting nearby people and other machine users that a vehicle is approaching.

[view online](#)



### Specifications

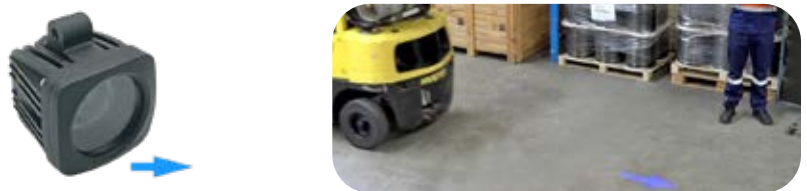
|                    |                           |
|--------------------|---------------------------|
| Voltage            | 9 - 80 VDC                |
| Power              | 7 x 3 Watt Cree leds      |
| Dimensions         | 130 x 150 x 80mm          |
| Material           | Diecast aluminium housing |
| Reflector and lens | Polycarbonate             |
| Mounting bracket   | Stainless steel           |
| Termination        | 500mm flying lead         |
| Waterproof rating  | IP67                      |
| Hours lifespan     | 30,000+                   |
| Beam Pattern       | Arc                       |

Arc Light - Blue (Part no. 14990)  
Arc Light - Red (Part no. 14991)

## SmartArrow LED

Available in a distinct blue beam, this light is specifically designed to project a directional arrow, as a visual caution onto the floor of your warehouse; alerting nearby personnel and other machine users of the direction that a vehicle is approaching.

[view online](#)



### Specifications

|                    |                           |
|--------------------|---------------------------|
| Voltage            | 10 - 80 VDC               |
| Power              | 10 W                      |
| Dimensions         | 82 x 80 x 80mm            |
| Material           | Diecast aluminium housing |
| Reflector and lens | Polycarbonate             |
| Mounting bracket   | Stainless steel           |
| Termination        | 500mm flying lead         |
| Waterproof rating  | IP67                      |
| Hours lifespan     | 50,000                    |

Part no. 16179

## Line Light LED

Available in blue and red beam, these lights are specifically designed to project a visual caution mark onto the floor of your warehouse, alerting nearby people and other machine users that a vehicle is approaching.

[view online](#)



### Specifications

|                    |                           |
|--------------------|---------------------------|
| Voltage            | 10 - 80 VDC               |
| Power              | 5 x 3 Watt Cree leds      |
| Dimensions         | 115 x 85.87 x 74mm        |
| Material           | Diecast aluminium housing |
| Reflector and lens | Polycarbonate             |
| Mounting bracket   | Stainless steel           |
| Termination        | 500mm flying lead         |
| Waterproof rating  | IP67                      |
| Hours lifespan     | 30,000+                   |
| Beam Pattern       | Line                      |

Line Light - Blue (Part no. 13442)  
Line Light - Red (Part no. 13444)

## SmartBeacon Range

The SmartBeacon range is a cost-effective solution for your visual alert needs. Available in three different sizes, this product has been specifically designed to alert nearby people and other machine users if a machine is operational.

[view online](#)



### Specifications

|                | Part no. 16180 | Part no. 16181 | Part no. 16182 |
|----------------|----------------|----------------|----------------|
| Voltage        | 10 - 110 VDC   | 10 - 110 VDC   | 10 - 110 VDC   |
| Power          | 10 W           | 15 W           | 15 W           |
| Output         | 300 Lumen      | 450 Lumen      | 450 Lumen      |
| Dimensions     | 130x130x95mm   | 75x75x160mm    | 95x95x130mm    |
| Housing        | Polycarbonate  | Polycarbonate  | Polycarbonate  |
| Lens           | Polycarbonate  | Polycarbonate  | Polycarbonate  |
| IP rating      | IP67           | IP67           | IP67           |
| Hours lifespan | 50,000         | 50,000         | 50,000         |

## 'SmartSpot' Warning Light

Available in blue and red beam, these lights are specifically designed to project a visual caution mark onto the floor of your warehouse, alerting nearby people and other machine users that a vehicle is approaching.

[view online](#)



### Specifications

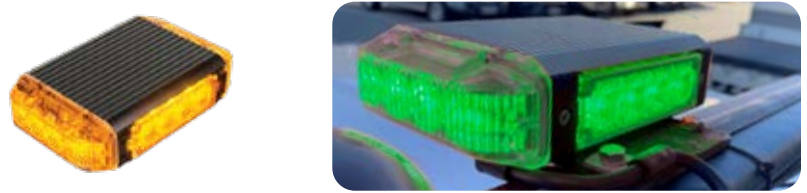
|                    |                                |
|--------------------|--------------------------------|
| Voltage            | 9 - 80 VDC                     |
| Power              | 2 x 3 Watt Cree leds           |
| Current Draw       | 0.49 A @ 9 V<br>0.027 A @ 80 V |
| Material           | Diecast aluminium housing      |
| Reflector and lens | Polycarbonate                  |
| Mounting bracket   | Stainless steel                |
| Termination        | 300mm flying lead              |
| Waterproof rating  | IP67                           |
| Beam Pattern       | Spot                           |

'SmartSpot' Light - Blue (Part no. 12416)  
'SmartSpot' Light - Red (Part no. 12429)

## Colour Change LED Mini Light Bar

Designed to make surrounding personnel aware of a machine's status. A trigger wire will interchange the light from amber to green to convey whether the machine is safe to approach.

[view online](#)



### Specifications

|                    |                   |
|--------------------|-------------------|
| Voltage            | 12 - 30 VDC       |
| Max Current Draw   | 3 A @ 12 V        |
| Flash Patterns     | 14                |
| Mounting           | 4 x M5 Bolts      |
| Lens               | Poly carbonate    |
| Housing            | Aluminium         |
| Cable Length       | 0.4m              |
| Weight             | 1kg               |
| Light Source       | 4 x 4 LED Modules |
| Flash Colour       | Amber / Green     |
| Ingress Protection | IP67              |

Part no. 13470





# LED Work Lights

## The pinnacle of high output lighting technology

Our state-of-the-art LED work lights are built to endure the toughest conditions. Resistant to shock, vibration, dust, and moisture, they offer unmatched durability and reliability with solid-state LED construction and a fully sealed housing.

Featuring rugged, yet lightweight diecast alloy housing, stainless steel mounting hardware, and virtually unbreakable polycarbonate lenses, these lights can handle anything.

Elevate your worksite illumination with our premium LED work lights – where exceptional performance meets unbeatable toughness.

### Specifications

|            |  |  |  |  |
|------------|---|---|---|---|
|            | <b>Work Lamp 12W 9-32V<br/>Part no. 17534</b>                                       | <b>Work Lamp 12W 10-32V<br/>Part no. 17553</b>                                      | <b>Heavy-Duty LED Light<br/>Part no. 12194</b>                                      | <b>Compact Work Lamp<br/>Part no. 16652</b>   |
| LED        | 4 x 3W  | 4 x 3W XTE (CREE)   | 8 x 3W  | 4 x 5W  |
| Beam       | 60°   | 40°   | 60°   | 40°   |
| eLumens    | 950 Lu  | 1081 Lu   | 2980 Lu   | 1200 Lu   |
| rLumens    | 2000Lu  | 1544 Lu   | 2047 Lu   | 840 Lu  |
| Voltage    | 9-32V DC  | 10-32V DC   | 9-52V DC  | 9-48V DC  |
| IP Rating  | IP69  | IP67  | IP69  | IP69  |
| Connector  | 2-pin Deutsch   | 2-pin Deutsch   | 2-pin Deutsch   | 2-pin Deutsch   |
| Dimensions | 92mm x 70mm x 49.4mm<br>(3.62" x 2.75" x 1.94")                                     | 91mm x 70mm x 39.9mm<br>(3.58" x 2.76" x 1.57")                                     | 100mm x 120mm x 80mm<br>(3.94" x 4.72" x 3.15")                                     | 121mm x 105mm x 85mm<br>(4.76" x 4.13" x 3.35")                                     |
| Weight     | 0.40kg (0.88lbs)  | 0.41kg (0.9lbs)   | 1.74kg (3.83lbs)  | 1.20kg (2.65lbs)  |

[view online](#)





# Maxi Vision® Camera Systems

For maintaining clear vision day or night!

The Maxi Vision® camera systems offer machine operators a new perspective on driving and operating their equipment. The range of single and multiple camera systems provide end users with different choices on the best camera system set up to suit their application.

The Maxi Vision® range of colour LCD monitor and camera options are robust in design and are ideally suited to industrial and mining applications. Heavy duty casing and mounting options are also available to suit custom applications.

Widen your view towards machine safety and productivity.

## A range of kits available:

- 5" monitor (add up to 3 cameras)
- 7" monitor (add up to 4 cameras)
- 10.4" monitor (add up to 4 cameras)
- 15" monitor (add up to 4 cameras)
- 27" monitor (add up to 4 cameras)

Custom kits to suit specific applications available on request.

[view online](#)



# Maxi Vision® Forklift Mast Camera Kits

Clear vision reduces product damage costs

Provide forklift operators a new perspective on driving and operating their equipment. The camera systems are designed to enhance safety by improving the operator's vision when performing such tasks as lifting, transporting loads or reversing the forklift. The systems are suitable for use on small or large forklift trucks, battery electric or I/C models.

The kits includes pulleys, heavy-duty cabling, special mounting and fittings to enable reliable installation to most battery-electric and IC forklifts. So look forward to a safer view on forklift safety whilst improving productivity!

## Features

- ✓ Multiple camera options available
- ✓ Customised systems available on request
- ✓ 12/24 V application
- ✓ 36/48 V application with addition of voltage regulator
- ✓ Simple to use, reliable in operation and easy to maintain
- ✓ Compatible with small or large forklifts
- ✓ Clear vision whilst lifting, transporting loads and reversing
- ✓ Industry proven reliability

[view online](#)



# Compact 2 Camera DVR Recorders

Clear, precise, and compact

The AusProTec™ Maxi Vision Compact 2 Camera DVR Recorders have been designed to assist with in-cab and forward monitoring on mobile equipment. These multi-voltage units come complete with inbuilt forward and reverse cameras, SD card, GPS and G-shock sensors. Images can be easily downloaded and viewed utilising the supplied PC Viewer software.

[view online](#)



# DVR Wireless Camera Kits

Close up views of the work area from a safe distance area

Working on mobile equipment is potentially hazardous at times. The AusProTec™ 9" DVR Wireless Camera Kits are designed to make tasks safer and easier to undertake. It provides personnel with clear and closer views of the work area and the task at hand. It also eliminates the need for personnel to be in high-risk areas; reducing workplace health and safety risks.

Designed for closed cab / internal warehouse operation, these kits have optional magnetic camera and monitor mounting options and come complete with a rechargeable battery pack (up to 8 hours of operation), allowing the camera to be positioned anywhere prior to the work being commenced.

With a strong digital signal, the AusProTec™ DVR Wireless Camera Kits are built to withstand the harshest of conditions, with easily installed wireless technology there is no need to run cables through machinery.

If a hard-mounted solution is required, the camera can be wired directly to localised machine power, such as the rear lights.

Please note: The DVR Wireless Camera Kits are a standalone wireless system, therefore, it is not dependent on a site's network.

## Features

- ✓ Quick and adaptable relocation of cameras for new tasks
- ✓ Flexible hardware solution for all mobile equipment applications
- ✓ Easy to use functionality
- ✓ No EWP, ancillary maintenance personnel required to deploy cameras
- ✓ Up to 100m (328ft) transmission distance.
- ✓ Built-in 2.4GHz-2483.5GHz digital wireless transmitter
- ✓ 28 infrared lights – 20m (65.6ft) night vision distance
- ✓ Backlit monitor controls for night vision
- ✓ Waterproof camera housing

[view online](#)





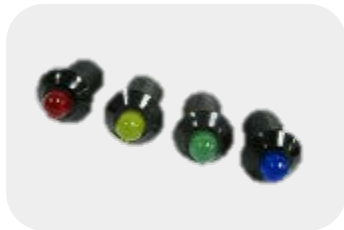
# Specialised Auto Electrical Parts

RCT is your supply expert for those difficult to find parts for industrial, mining and heavy-duty applications.

## 6-32 Volt LED Pilot Lights

Compact in design and highly resistant to vibration, dust and moisture. Say goodbye to costly downtime from frequently replacing standard incandescent globes. These lights are more tolerant of voltage changes and spikes, ensuring reliable performance. Available in four colors: red, green, yellow and blue.

[view online](#)



## Coolant Level Kits

Monitor coolant levels effortlessly to avoid premature engine failure. Traditional gauges often miss fluid loss due to blown hoses or cracked seals. RCT Coolant Level Kits alert operators when coolant is dangerously low, allowing timely preventive action and saving your engine from major damage.

[view online](#)



## Deutsch Connectors

Our single contact system terminates all Deutsch connectors with ease. The popular DT series connectors, crafted from impact-resistant thermoplastic, endure temperatures up to 125°C. With integral silicone wire seals, there's no need for additional sealing once connected.

[view online](#)



## Battery Isolators

Supplied by a range of manufacturers such as Cole Hersee, Locksafe, Bosch and Lucas, available in 12 or 24V, single or double pole and suited for universal application. We have a selection of the most reliable and cost effective isolators available.

[view online](#)



## Explore more at [rct-global.com/store](http://rct-global.com/store)

2500+ parts, including:

- ✓ Alarms
- ✓ Beacons
- ✓ Circuit breakers
- ✓ Connectors & contacts
- ✓ Plugs & pins
- ✓ Terminals
- ✓ Gauges
- ✓ Instruments
- ✓ Rear vision cameras
- ✓ Seals
- ✓ Senders
- ✓ Solenoids
- ✓ Strobes
- ✓ Switches
- ✓ Timers
- ✓ Valves
- ✓ Wiring systems
- ✓ Customised electrics and much more...







[rct-global.com](http://rct-global.com)

[solutions@rct-global.com](mailto:solutions@rct-global.com)