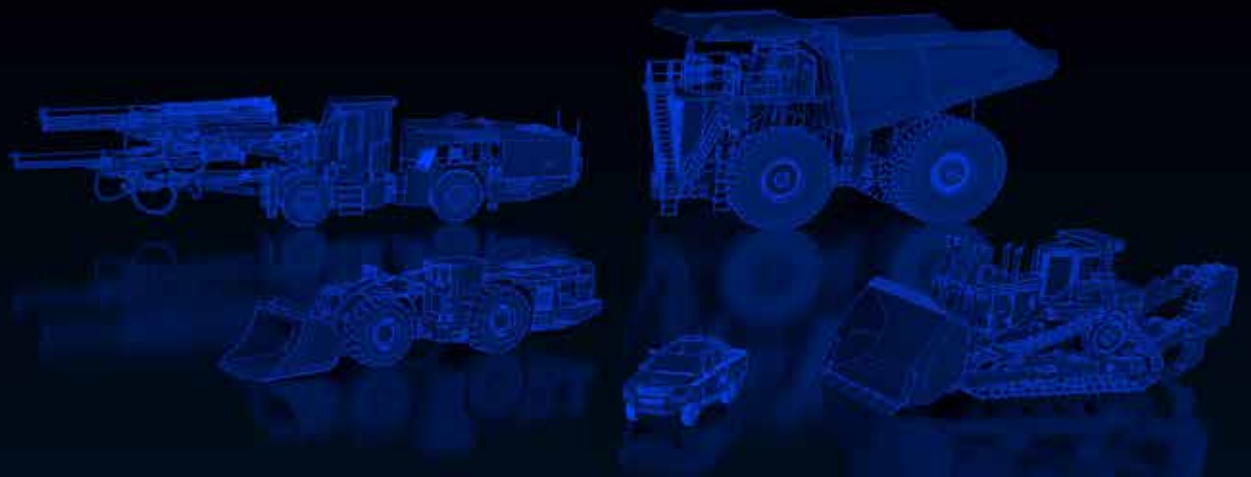




AUTOMATION & CONTROL



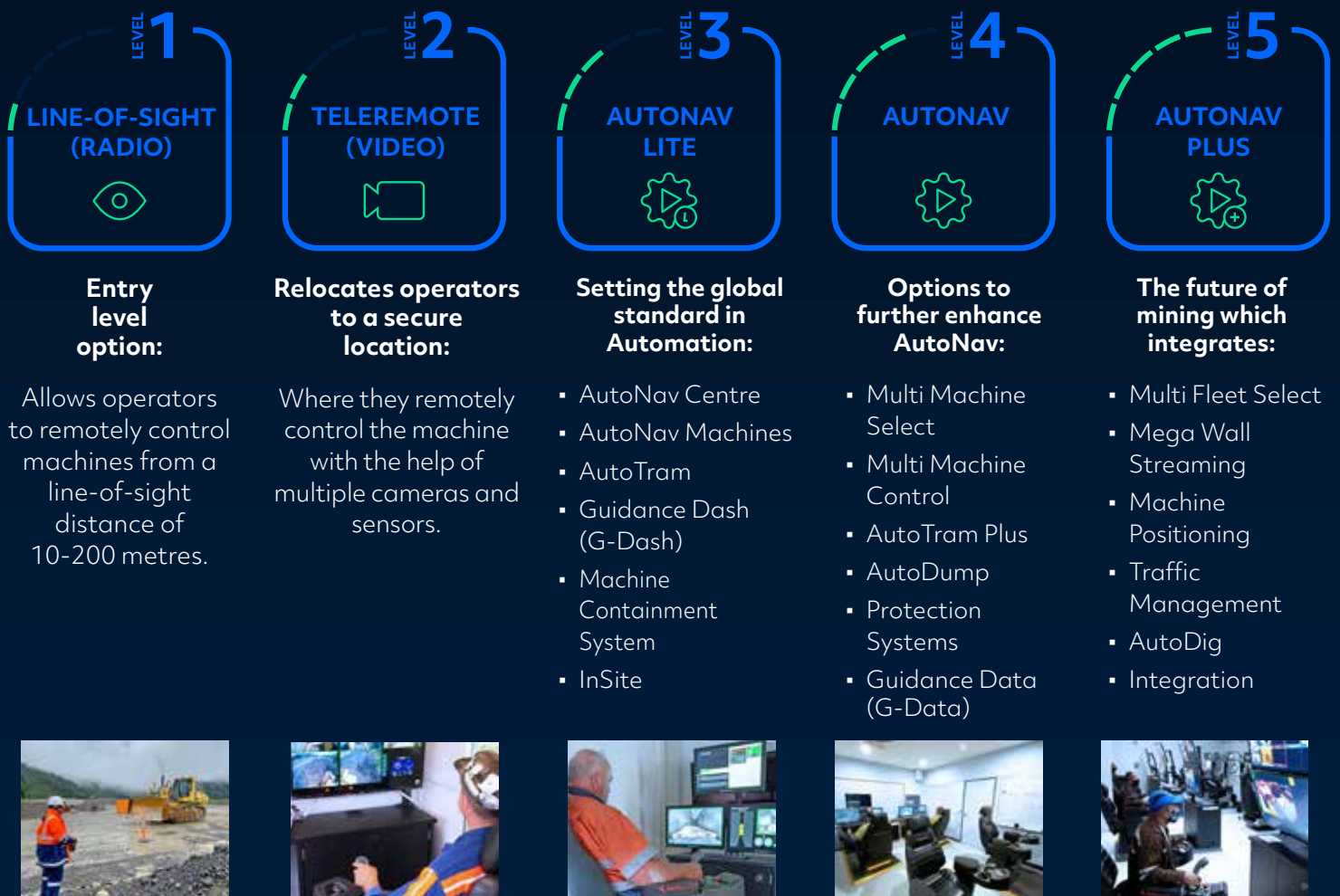
1



From the simplest to the most sophisticated, RCT offers **multiple levels** of automation.

The ControlMaster® AutoNav range is scalable. With upgrades you can go from our Lite solution through to a fully autonomous fleet, with Plus. In addition, RCT's

Automation path allows the combination of all the latest technology available to deliver the full solution including Traffic Management, Integration, and much more.



Autonomous Work Area Equipment

Area Access Cabinet (AAC)	5
Area Access Cabinet (AAC) Components and accessories	5
Barrier System Components	7
Barrier Systems	8
Digital Communications	9
Waypoints	10

Fixed Plant & Ancillary Remote Control

CM1000 Series Components	11
--------------------------	----

Automation Centres

Automation Centres	12
Components and Accessories	13

Tools and Test Equipment

Harnesses	15
Test Kits	15
Tools Miscellaneous	16

Autonomous Control Systems

AutoNav Machine Components and Accessories	16
Consumables	18
Hydraulic Components	19
Portable Teleremote Machine Components and Accessories	21
Remote Control Kits: AutoNav Capable	21
Remote Control Kits: Component Enclosures & Accessories	22
Remote Control Kits: Line of Sight & Portable Teleremote Only	24
Remote Control Kits: Machine Components	24
Remote Control Kits: Spares and Accessories	26
Teleremote Machine Components and Accessories	27

Analogue Automation and Remote Control Major Machine Components

Automation Components	29
Cameras	30
Electrical Interfaces	31
Remote Component Enclosures	32

Analogue Automation and Remote Control Minor Machine Components

Machine Ancillary Parts	32
Machine Brackets	38
Machine Harnesses	39
Machine Hydraulics	41
Remote Component Enclosure Parts	42

Automation and Remote Control Solutions

Automation Solution	43
Line-of-Sight Remote Control	44
Portable Teleremote Control	44
Teleremote Control	45

Automation Control Spare Parts and Accessories

Aerials and Mounts	46
Batteries and Chargers	46
Carry Frame and Shoulder Harnesses	47
Operator Station Components	47
Portable Teleremote Components	48
Service and Test Kits	49
Teleremote Communications Fittings and Equipment	50
Teleremote Communications Parts and Equipment	52
Tools and Accessories	54
Transit Case	54

Digital Automation & Remote Control Major Machine Components

Automation Components	55
Cameras	55
Electrical Interfaces	56
Machine Brackets	56
Remote Component Enclosures	57
Vision Transmitters	57
Digital Automation & Remote Control Minor Machine Components	
Machine Ancillary Parts	58
Machine Brackets	64
Machine Harnesses	66
Machine Hydraulics	68
Remote Enclosure Parts	69
Digital Automation Centres	
Automation Centre Chair	70
Handheld Remote Control Systems: Series 1000	
Brake Retrieval System	71
Handheld Series 1000	71
Portable Remote Water Fill System	72
Self Cleaning Camera Systems	
Self Cleaning Cameras - ToughEye 1700	73
Self Cleaning Cameras - ToughEye 3100	74
Work Area Safety Guards	
Machine Containment System	75

AUTONOMOUS WORK AREA EQUIPMENT

AREA ACCESS CABINET (AAC)

PRODUCT IMAGE
UNAVAILABLE



14917
KIT AAC DIGITAL WITH 1 X WORK
AREA ENTRY KIT

Part No: 15183
AREA ACCESS CONTROL
(DIGITAL SYSTEMS)

AUTONOMOUS WORK AREA EQUIPMENT

AREA ACCESS CABINET (AAC) COMPONENTS AND ACCESSORIES



Part No: 10822
PLUG BAYONET RJF RJ45 GREEN
FIELD CONNECTOR PVC GLAND



Part No: 12182
CONVERTOR DC/DC 9 - 36V
INPUT 28VDC OUTPUT 150 WATT
SINGLE OUTPUT



Part No: 14009
BREAKER 5A THERMAL
MAGNETIC



Part No: 14011
BREAKER 3A THERMAL
MAGNETIC



Part No: 14053
CONNECTOR BULKHEAD FIBRE
OPTIC EXPANDED BEAM TO
FC 4 CH 4MTR TO SUIT MUX
TELECABIN / AACC

PRODUCT IMAGE
UNAVAILABLE

Part No: 14055
CABLE FIBRE OPTIC EXPANDED
BEAM 200 METRES LONG
CONNECTS CABIN TO FOBOT



Part No: 14057
CONNECTOR BULKHEAD FIBRE
OPTIC EXPANDED BEAM TO LC
4 CH 2MTR TO SUIT CUSTOMER
FOBOT



Part No: 14653
ADAM 6051 TO SUIT AAC

PRODUCT IMAGE
UNAVAILABLE

Part No: 14654
OPUS TO SUIT AAC



Part No: 14655
MOXA RS232-ETHERNET SUITS
AAC ANALOGUE

PRODUCT IMAGE
UNAVAILABLE

Part No: 14656
ACTI 4 CH ENCODER TO SUIT AAC



Part No: 14981
ROUTER TO SUIT AREA ACCESS
CONTROL 14109, 14425, 15183,
15185

PRODUCT IMAGE
UNAVAILABLE



Part No: 10177
LOOM TELEREMOTE CAMERA
12MTRS



Part No: 14220
BALL CAMERA IP69K HEAVY
DUTY

Part No: 15131
ETHERNET OVER COAXIAL TRX
RCT CONNECT



Part No: 7169
CAMERA LOOM 6M



Part No: 17050
DUPLEXOR/FILTER COMBINER

AUTONOMOUS WORK AREA EQUIPMENT

BARRIER SYSTEM COMPONENTS

The ControlMaster Machine Containment system has been designed for underground Remote/Teleremote mining applications for single and multiple entries to a remote mining area. Machine Containment prevents the remote-operated machines from exiting the area, and personnel from entering the area.

PRODUCT IMAGE
UNAVAILABLE



Part No: 13029
RAM D STD LENGTH ARM



Part No: 13030
RAM D ROUND BASE AND BALL



Part No: 10144
LOOM FOR 9525 DUAL MACHINE CONTAINMENT SYSTEM



Part No: 10860
MACHINE CONTAINMENT SYSTEM SPLITTER UNIT



Part No: 13053
WALL MOUNT FOR MACHINE CONTAINMENT SYSTEM



Part No: 13054
HEAVY DUTY DUAL SCANNER ASSEMBLY



Part No: 13055
HEAVY DUTY DUAL REFLECTOR ASSEMBLY



Part No: 15074
WARNING LIGHT FOR HEAVY DUTY MACHINE CONTAINMENT SYSTEM



Part No: 1552
POWER CABLE 3 CORE 1.0MM
GREY - FLEXIBLE



Part No: 4097
REFLECTOR POLARISED
100MM X 100MM



Part No: 9265
MOUNT SCANNER
FOR 9244



Part No: 9525
CONTROL UNIT FOR MACHINE
CONTAINMENT SYSTEM



Part No: 9638
LOOM FOR 9525 MACHINE
CONTAINMENT SYSTEM
CONTROL UNIT



Part No: 9674
PLUG BYPASS FOR MACHINE
CONTAINMENT SYSTEM



Part No: 9675
SCANNER TO SUIT MACHINE
CONTAINMENT SYSTEMS W/
PLUG WITH 4 PIN DEUTSCH PLUG

PRODUCT IMAGE
UNAVAILABLE

Part No: 17619
MOXA RS232-ETHERNET AAC
DIGITAL AAC BUILD POST
NOV 21

PRODUCT IMAGE
UNAVAILABLE

Part No: 17626
LOOM 3M DUAL SCANNER TYPE 2
MACHINE CONTAINMENT
SYSTEM

AUTONOMOUS WORK AREA EQUIPMENT

BARRIER SYSTEMS

The ControlMaster Machine Containment system has been designed for underground Remote/Teleremote mining applications for single and multiple entries to a remote mining area. Machine Containment prevents the remote-operated machines from exiting the area, and personnel from entering the area.

PRODUCT IMAGE
UNAVAILABLE

Part No: 15920
KIT CONTROL UNIT
H/DUTY LANYARD MACHINE
CONTAINMENT SYSTEM

PRODUCT IMAGE
UNAVAILABLE

Part No: 11771
KIT MACHINE CONTAINMENT
SYSTEM ATX2200



Part No: 13056
KIT MACHINE CONTAINMENT
SYSTEM CONTROL UNIT HEAVY
DUTY

PRODUCT IMAGE
UNAVAILABLE

Part No: 17617
KIT BARRIER DUAL GATE
MACHINE CONTAINMENT
SYSTEM 2 X DUAL SCANNER
ASSEMBLIES

PRODUCT IMAGE
UNAVAILABLE

Part No: 17644
KIT BARRIER UPGRADE DUAL
GATE MACHINE CONTAINMENT
SYSTEM UPGRADES 13056 TO
17617

DIGITAL COMMUNICATIONS



Part No: 15192
PLUG N TYPE 50 OHM

PRODUCT IMAGE
UNAVAILABLE



Part No: 0450
POWER DIVIDER



Part No: 1128
CABLE PLUG N MALE/RG8 CRIMP
(CABLE 1127)



Part No: 15168
RCT CONNECT WIRELESS
ACCESS POINT



Part No: 4619
ADAPTOR N FEMALE/N FEMALE

PRODUCT IMAGE
UNAVAILABLE



Part No: 5370
CABLE SET 2M INCLUDES N TYPE
CONNECTORS

Part No: 5945
CABLE SET 70M INCLUDES N
TYPE CONNECTORS



Part No: 17125
EXTENDER RCT CONNECT
EXPANDS SYSTEM > 1KM UP TO
2KM DIGITAL COMMS COAXIAL
BACKHAUL



Part No: 17281
RCT CONNECT CAMERA
INTERFACE

WAYPOINTS



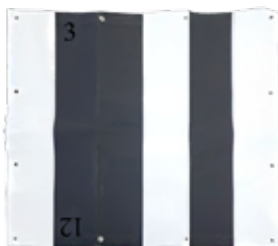
Part No: 12770
REFLECTOR PANEL WAYPOINT 1 &
8 TO SUIT GUIDANCE P2P



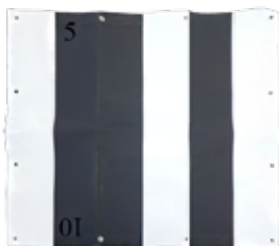
Part No: 12771
REFLECTOR PANEL WAYPOINT 2
& 4 TO SUIT GUIDANCE P2P8 TO
SUIT GUIDANCE P2P



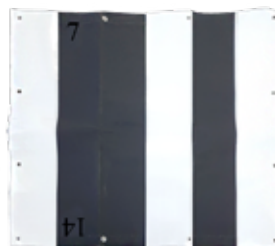
Part No: 12856
REFLECTOR PANEL WAYPOINT 0
TO SUIT GUIDANCE P2P



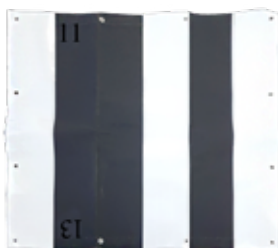
Part No: 12852
REFLECTOR PANEL WAYPOINT 3 &
12 T/S GUIDANCE P2P



Part No: 12853
REFLECTOR PANEL WAYPOINT 5 &
10 T/S GUIDANCE P2P



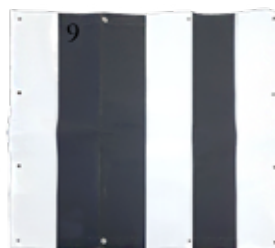
Part No: 12854
REFLECTOR PANEL WAYPOINT 7
& 14 T/S GUIDANCE P2P



Part No: 12855
REFLECTOR PANEL WAYPOINT 11
& 13 T/S GUIDANCE P2P



Part No: 12857
REFLECTOR PANEL WAYPOINT 6
T/S GUIDANCE P2P



Part No: 12858
REFLECTOR PANEL WAYPOINT 9
T/S GUIDANCE P2P

CM1000 SERIES COMPONENTS

PRODUCT IMAGE
UNAVAILABLE



Part No: 10142
CHARGER TO SUIT 10436 AND
10143



Part No: 10143
CM1000 TX HANDHELD
TRANSMITTER 12 FUNCTION



Part No: 10436
CM1000 TX HANDHELD
TRANSMITTER 6 FUNCTION



Part No: 11361
BRACKET CM1000 HANDHELD



Part No: 7764
ANTENNA TO SUIT 9319



Part No: 8492
RAM MOUNT 2 1/2 INCH



Part No: 9319
CM1000 TRANSCEIVER 12/24V



Part No: 9429
EXPANSION MODULE TO SUIT
CM1000



Part No: 9637
ANTENNA BASE TO SUIT 9319

AUTOMATION CENTRES

AUTOMATION CENTRES



Part No: 15299
AUTOMATION CENTRE
UNDERGROUND CABIN NO
HITCH



Part No: 15300
AUTONAV LITE
CABIN



Part No: 14324
AUTONAV CENTRE
3X 27"



Part No: 15829
AUTONAV CENTRE 2 MONITORS
2 X 43 INCH MONITORS



Part No: 15830
AUTONAV CENTRE 1 MONITOR
1 X 43 INCH MONITOR

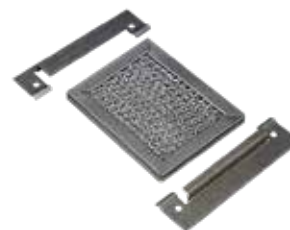
AUTOMATION CENTRES

COMPONENTS AND ACCESSORIES

PRODUCT IMAGE
UNAVAILABLE



Part No: 11732
CABLE SET HDMI TO HDMI 3
METRE



Part No: 13388
AIR FILTER TO SUIT
AVK34 LOUVER

Part No: 13562
ARM MONITOR BLACK 6 - 20 KG
FLOATING FLAT PANEL



Part No: 13832
JOINER ZIRKONA LARGE



Part No: 13834
MOUNT ZIRKONA VESA 75/100



Part No: 13836
MOUNT ZIRKONA AMPS
ROUND PLATE 30X38



Part No: 14130
CABLE MALE DISPLAY PORT TO
HDMI 3 METRE



Part No: 1428
SWITCH MUSHROOM HEAD RED
30MM



Part No: 14344
VEHICLE DISPLAY CONTROLLER
TO SUIT AUTOMATION CENTRE



Part No: 14456
KEYPAD CAN 4 X 5 PUSH
BUTTONS WITH ISO SYMBOLS



Part No: 14719
ARM REST COVER TO SUIT 14333
AUTOMATION CENTRE CHAIR

PRODUCT IMAGE
UNAVAILABLE

Part No: 15906
MONITOR 43" OPS STATION
4K-UHD

PRODUCT IMAGE
UNAVAILABLE

Part No: 16960
KIT UPS MMC SUITS US &
CANADA PLUG TYPE A,B

PRODUCT IMAGE
UNAVAILABLE

Part No: 9729
MAT SUPER BRUSH 1M X 1.35M
FIBRE OPTIC CONTROL STATION



Part No: 10072
LEFT JOYSTICK TO
SUIT CHAIR



Part No: 10095
RIGHT JOYSTICK TO SUIT CHAIR



Part No: 12772
27" MONITOR METAL FRAME



Part No: 14172
AUTOMATION CONTROLLER



Part No: 14333
AUTOMATION CENTRE CHAIR



Part No: 15508
RCT CONNECT MANAGER

PRODUCT IMAGE
UNAVAILABLE

Part No: 16966
STATION OPERATOR LEATHER
AUTOMATION LITE 3D TOUCH
PAD

PRODUCT IMAGE
UNAVAILABLE

PRODUCT IMAGE
UNAVAILABLE

Part No: 17314
CONTROL JOYSTICK MOUSE
AUTONAV LITE CHAIR

Part No: 16978
CONTROL UNIT AUTOMATION
LITE INCLUDES MCS, VISION PC

TOOLS AND TEST EQUIPMENT

HARNESSES

PRODUCT IMAGE
UNAVAILABLE



Part No: 14660
LEAD PROGRAMMING TO SUIT
13045 VISION SERVER

Part No: 8809
LOOM PROGRAMMING TO SUIT
CM2200

TOOLS AND TEST EQUIPMENT

TEST KITS

PRODUCT IMAGE
UNAVAILABLE



Part No: 14588
GUIDANCE TEST KIT

Part No: 11657
ATX/ARX2200 TEST KIT
LEVELS 1 TO 3



Part No: 15209
ATX/ARX REMOTE SET TEST UNIT,
INCLUDES TOUGHBOOK AND
PRELOADED SOFTWARE

PRODUCT IMAGE
UNAVAILABLE



Part No: 15980
NETWORK TEST TOOL

Part No: 7273
ATX/ARX2200 REMOTE CONTROL
TEST UNIT

TOOLS AND TEST EQUIPMENT

TOOLS MISCELLANEOUS

Part No: 11310
TOOL PORTABLE SCANNER
ALIGNMENT GUIDANCE TOOL



Part No: 11542
COAXIAL STRIPPING TOOL TO
SUIT RG8 CABLE (1127)



Part No: 3177
REMOVAL TOOL
16 BLUE



Part No: 6418
REMOVAL TOOL # 16 LIGHT BLUE
THIN WALL

AUTONOMOUS CONTROL SYSTEMS

AUTONAV MACHINE COMPONENTS AND ACCESSORIES

PRODUCT IMAGE
UNAVAILABLE



Part No: 11399
HARNESS PROP BRAKE CM2200
GUID CM2200 GUIDANCE

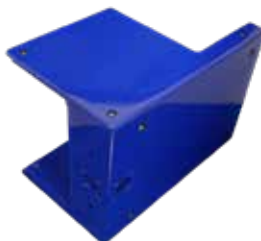
Part No: 10041
PROTECTIVE SCANNER
COVER



Part No: 10649
COUPLER TO SUIT STEER
SENSOR 6060



Part No: 11040
SCANNER AND MOUNT
(GENERIC)



Part No: 11041
MOUNT TO SUIT 11040



Part No: 12176
8M LOOM FOR GUIDANCE
SCANNER



Part No: 12203
STEERING SENSOR ALT



Part No: 12647
MOUNT WELD ON ARTIC SENSOR



Part No: 12648
HARNESS PROP BRAKE CM2200



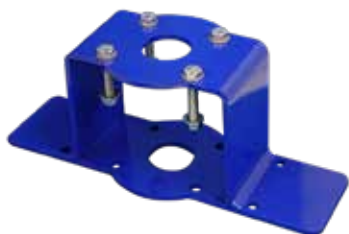
Part No: 12687
12M LOOM FOR GUIDANCE
SCANNER 12M



Part No: 15357
CONTROL GUIDANCE
UNIT 2.0



Part No: 16497
COVER WATER GUIDANCE
SCANNER



Part No: 6047
GUIDANCE ARTICULATION
SENSOR MOUNT (ALTERNATE)



Part No: 6060
SENSOR STEER GUIDANCE SER 2



Part No: 7806
6M LOOM FOR GUIDANCE
SCANNER



Part No: 9290
SCANNER IP67 50M RANGE

CONSUMABLES

PRODUCT IMAGE
UNAVAILABLE

Part No: 15564
TELEREMOTE CONSUMABLES
KIT TO SUIT LHD 1 KIT PER
LOADER



Part No: 11513
PLUG FEM 6 SOCKET BAY CRIMP

PRODUCT IMAGE
UNAVAILABLE

Part No: 15566
KIT CONSUMABLES SITE TO SUIT
LHD 1 KIT PER SITE



Part No: 14411
PINCH WELD U CHANNEL EDGE

PRODUCT IMAGE
UNAVAILABLE

Part No: 10240
KIT BOLT MOUNT
TO SUIT 4391



Part No: 7627
DENSYL TAPE # 610 50MM X 10M



PRODUCT IMAGE
UNAVAILABLE



Part No: 10084
SENSOR PRESS NPN 0-250BAR
TORO TO SUIT TORO
PROPORTIONAL BRAKE

Part No: 10682
KIT PROP BRAKE MANIFOLD
850PSI POWER TO APPLY

Part No: 11323
VALVE DIVERTER TO SUIT 10682
& 9830 & 10679 & 11249 COIL NOT
INCLUDED

PRODUCT IMAGE
UNAVAILABLE



PRODUCT IMAGE
UNAVAILABLE

Part No: 11326
VALVE ELECT PROP 0-1000 PSI
TO SUIT 10682 & 11249 COIL NOT
INCLUDED

Part No: 11348
COIL TO SUIT
11323

Part No: 13947
KIT PROP BRAKE MANIFOLD
138BAR POWER TO RELEASE
(SAHR)

PRODUCT IMAGE
UNAVAILABLE

PRODUCT IMAGE
UNAVAILABLE



Part No: 13964
VALVE CARTRIDGE 138BAR
PROP TO SUIT 13947 COIL NOT
INCLUDED

Part No: 13966
COIL TO SUIT 13964 24V
DEUTSCH SIZE 10

Part No: 16579
KIT BRAKE PROP MANIFOLD
635PSI POWER TO APPLY DUAL
CIRCUITS REDUNDANT BRAKE

PRODUCT IMAGE
UNAVAILABLE

PRODUCT IMAGE
UNAVAILABLE

PRODUCT IMAGE
UNAVAILABLE

Part No: 16580
VALVE ISOLATION 24V WITH COIL
NC/ 250 BAR MAX SUITS
16579

Part No: 16581
VALVE PROPORTIONAL - 09
SPOOL CARTRIDGE ONLY W/O
COIL SUITS 16579

Part No: 16585
COIL SERIES 1/2" I.D. 24V 19W
DEUTSCH SUITS 16581
GTP0234



Part No: 9830
KIT PROP BRAKE MANIFOLD
450PSI POWER TO APPLY

PRODUCT IMAGE
UNAVAILABLE

Part No: 9831
VALVE ELECT PROP 0-600 PSI TO
SUIT 9830 COIL NOT INCLUDED

PRODUCT IMAGE
UNAVAILABLE

Part No: 9838
COIL TO SUIT 9831 & 11326 24V
DEUTSCH SIZE 10 TO SUIT
EMDV-10-N-3A-0-0 11759



Part No: 0392
PROPORTIONAL VALVE TO SUIT
CAT STEERING AND IMPLEMENTS



Part No: 0393
COIL 24V TO SUIT 0392
PROP VALVE



Part No: 0459
COIL TO SUIT CAT STEERING AND
IMPLEMENT VALVES (FLY LEAD)



Part No: 10093
SENSOR PRESS NPN
0-100 BAR



Part No: 10767
DIN PLUG WITH LED AND
FLYING LEAD

PRODUCT IMAGE
UNAVAILABLE

Part No: 12765
REPLACEMENT STEERING
MANIFOLD FOR CAT LOADERS
(FULL KIT)



Part No: 13534
KIT PROP BRAKE
MANIFOLD 635PSI

PORTABLE TELEREMOTE MACHINE COMPONENTS AND ACCESSORIES



Part No: 12173
MOUNT ATX
MONITOR



Part No: 14220
BALL CAMERA IP69K
HEAVY DUTY



Part No: 15149
TRANSMITTER PORTABLE VIDEO,
2.4GHZ, 2 CAMERA INPUT



Part No: 15150
MONITOR PORTABLE TELE
RECEIVER

PRODUCT IMAGE
UNAVAILABLE

Part No: 15329
PORTABLE TELE KIT
(2 CAMERAS)



Part No: 7169
CAMERA LOOM
6M

REMOTE CONTROL KITS: AUTONAV CAPABLE



Part No: 14763
KIT ATX/ARX2200 GETMAN
A64HD 480 RADIO



Part No: 14994
ATX2200 KIT TO SUIT DOZER
BLUETOOTH RADIO SINGLE &
DUAL TILT

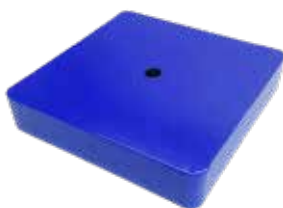


Part No: 16868
KIT ATX/ARX2200 DOZER
MULTI REGION BLUETOOTH

AUTONOMOUS CONTROL SYSTEMS

REMOTE CONTROL KITS: COMPONENT ENCLOSURES & ACCESSORIES

PRODUCT IMAGE
UNAVAILABLE



PRODUCT IMAGE
UNAVAILABLE

Part No: 12438
ENCLOSURE REMOTE
COMPONENTS (CM2200
GUIDANCE TELE REMOTE TO
SUIT R1300)

Part No: 12655
MOUNT RCE TO SUIT SANDVIK
LH514 LH517 LH621 MACHINE
SIDE

Part No: 12892
SEAL RUBBER RCE
(50M ROLL)

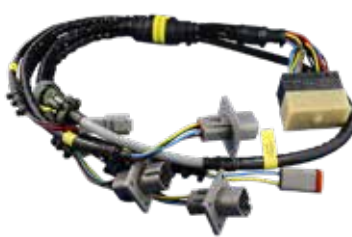
PRODUCT IMAGE
UNAVAILABLE



Part No: 16363
ENCLOSURE REMOTE
COMPONENTS SANDVIK LH203
COMPLETE

Part No: 10685
ENCLOSURE REMOTE
COMPONENTS

Part No: 10686
RG58 LOOM 500M N TYPE
CONNECTOR



Part No: 10687
INTERFACE TO
BULKHEAD LOOM

Part No: 10689
GUIDANCE CONTROL UNIT
TO BULKHEAD LOOM

Part No: 10690
GUIDANCE CONTROL UNIT TO
SCANNER BULKHEAD LOOM



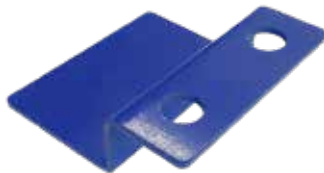
Part No: 10692
TELE TRANSMITTER
TO BULKHEAD LOOM

Part No: 10693
GAS STRUT
(RCE LIFTING)

Part No: 10806
REMOTE COMPONENT
ENCLOSURE TO SUIT SANDVIK
LH410/514/517/621



Part No: 11366
STRUT TO SUIT 10685 LID
1 = 1 STRUT



Part No: 13627
RCE LANDING
MOUNT



Part No: 13629
RCE HINGE MOUNT
SUITS SANDVIK



Part No: 13631
RCE MOUNT SUITS
SANDVIK



Part No: 13633
RCE MOUNT (MACHINE SIDE)
SUITS SANDVIK



Part No: 14527
LOOM M12 90D ETH
TO 6P BAYONET

AUTONOMOUS CONTROL SYSTEMS

REMOTE CONTROL KITS: LINE OF SIGHT & PORTABLE TELEREMOTE ONLY



Part No: 14359
KIT ATX/MRX 1000 TO SUIT
LOADER BLUETOOTH RADIO
ALL REGIONS



Part No: 16337
KIT REMOTE SET ATX/ARX2200
R1700K BLUETOOTH

AUTONOMOUS CONTROL SYSTEMS

REMOTE CONTROL KITS: MACHINE COMPONENTS



Part No: 13058
INTERFACE CAT DOZER GENERIC



Part No: 4392
PLUNGER RX MOUNTING FOOT



Part No: 0345
INTERFACE TO SUIT R1700G
SERIAL NUMBER SBR/XBR



Part No: 10015
INTERFACE CM2200 TO SUIT
ATLAS ST1520



Part No: 11963
ARX2200 RECEIVER TO
INTERFACE LOOM



Part No: 12596
REMOTE SELECT BOX

PRODUCT IMAGE
UNAVAILABLE



Part No: 15563
START ISOLATOR HARNESS

Part No: 15678
MACHINE CLIENT SUITS DIGITAL
MACHINES



Part No: 1677
HOURMETER GAUGE 12 / 24V -
DATCON # 110190



Part No: 1700
BATTERY ISOLATOR 24V DUAL
POLE INDEX PIN - COLE HERSEE
75910



Part No: 3083
LABEL START ISOLATOR (RED)



Part No: 3307
LOCKING BEADED TIE



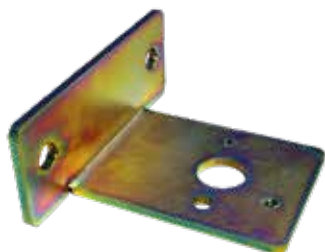
Part No: 3495
INTERFACE CM2200 TO
SUIT SANDVIK LHD



Part No: 3794
LOCKOUT BRACKET YELLOW
HINGE STYLE TO SUIT 1700



Part No: 3829
AIR SOLENOID VALVE 24V 2 PORT
NORMALLY CLOSED



Part No: 4300
MOUNT BRACKET RIGHT
ANGLE TO SUIT 1700



Part No: 4391
SOCKET RX MOUNTING
FOOT



Part No: 7531
INTERFACE TO SUIT R1600G/
R1700G SERIAL NUMBER 9PP AND
8XZ



Part No: 8025
INTERFACE TO SUIT
R3000H/R2900G/R1300G



Part No: 8861
INTERFACE TO SUIT
CAT R1600H (PCB VERSION)



Part No: 9954
NYLON GLAND
20MM 4.4 - 13.4MM



Part No: 15195
CONTROLLER SMART SERVICE
MONITOR

REMOTE CONTROL KITS: SPARES AND ACCESSORIES

Part No: 10710
BATTERY LITHIUM ION
TO SUIT ATX2200



Part No: 11777
CHARGER BATTERY
DUAL ATX



Part No: 12357
CASE TRANSIT TO
SUIT ATX KIT REV02



Part No: 15776
ANTENNA WHIP
2.4 TO 2.5GHZ



Part No: 10177
LOOM TELEREMOTE
CAMERA 12MTRS



Part No: 10394
LOOM TELEREMOTE
LIGHTING CAT



Part No: 16652
LAMP LED M/V 20W H/D
POST POST MOUNT ONLY



Part No: 12641
CAMERA MOUNT



Part No: 12645
LOGICS EXTENSION LOOM
R1700/R2900



Part No: 12646
ENGINE MONITORING
LOOM TO SUIT CAT
R1600,R1700,R2900,R3000

PRODUCT IMAGE
UNAVAILABLE



Part No: 16788
VISION SERVER 4 CH DIGITAL
MAX 4 ANALOGUE CAMERA

Part No: 13451
SHALLOW NYLON VL LAMP
MULTI-FUNCTION BLUE
(FLANGE MOUNT)



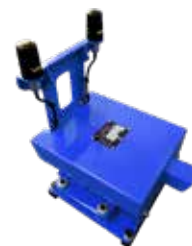
Part No: 13453
SHALLOW NYLON VL LAMP
MULTI-FUNCTION AMBER
(FLANGE MOUNT)



Part No: 13637
FRONT CAMERA MOUNT
ADAPTOR SUITS SANDVIK
LH514 LH517



Part No: 14220
BALL CAMERA IP69K
HEAVY DUTY



Part No: 15678
MACHINE CLIENT SUITS
DIGITAL MACHINES



Part No: 16049
CAMERA STD 100 DEG
TE-1700 SELF CLEANING

PRODUCT IMAGE
UNAVAILABLE

Part No: 16075
CAMERA MOUNT, SUITABLE FOR
MULTIPLE MOUNTING OPTIONS



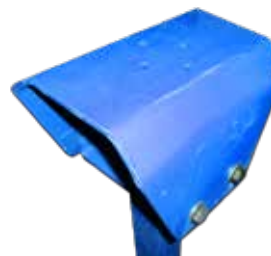
Part No: 16420
IP CAMERA, 100 DEGREE,
HIGH RESOLUTION, H.265



Part No: 1772
CIRCUIT BREAKER
MANUAL RESET 10A



Part No: 3072
SWITCH LEVEL OIL CAPACITIVE
1/4 NPT THREAD SIZE



Part No: 5588
CAMERA MOUNT, SUITABLE FOR
MULTIPLE MOUNTING OPTIONS



Part No: 5648
TELEREMOTE DASH
SWITCH KIT



Part No: 7169
CAMERA LOOM
6M



Part No: 8273
TELE/GUIDANCE DASH LOOM
TO SUIT CAT MACHINES



Part No: 8498
MOUNT POLE TO
SUIT GUIDANCE

PRODUCT IMAGE
UNAVAILABLE

Part No: 16800
SERVER DIGITAL VISION
4 CAMERA IP CAMERAS

AUTOMATION COMPONENTS

RCT's flagship ControlMaster® automation systems features scalable on board components to enable production gains across various operating applications.



Part No: 10685
ENCLOSURE REMOTE
COMPONENTS



Part No: 11040
SCANNER AND MOUNT
(GENERIC)



Part No: 6060
SENSOR STEER GUIDANCE
SER 2



Part No: 9290
SCANNER IP67
50M RANGE



Part No: 15357
CONTROL GUIDANCE
UNIT 2.0

CAMERAS

RCT's remote control machine components include a variety of cameras that have been designed to operate in the harshest conditions. A selection of angle lenses are available to suit a variety of applications. All cameras are rated to IP69 standards and designed to deliver high-quality video images under extreme conditions experienced in both underground and surface mining environments.

- Multi voltage
- Current draw of 110mA
- Sealed to IP69 standards
- Reverse polarity and short circuit protected
- Optimised lens angle for underground mining
- Utilises CCD HAD II technology



Part No: 13085
102 DEGREE BALL CAMERA



Part No: 14468
80 DEGREE BALL CAMERA



Part No: 14506
60 DEGREE BALL CAMERA



Part No: 14507
129 DEGREE BALL CAMERA



Part No: 14220
BALL CAMERA IP69K HEAVY
DUTY

ELECTRICAL INTERFACES

Interfaces are manufactured to integrate ControlMaster® Remote and Teleremote solutions into Original Equipment Manufacturer (OEM) machines. For further technical information please refer to your nearest RCT branch.

- Robust alloy enclosure
- Military-style connectors
- Internal circuit breakers
- Purpose-built for each machine model
- Available in 12 or 24 volt

Electrical interfaces are customised to suit each make of machine.



Part No: 3359
INTERFACE TO SUIT
R1300/R1600 PROPORTIONAL



Part No: 8924
INTERFACE TO SUIT
R1700 SERIES 2 PROPORTIONAL



Part No: 0345
INTERFACE TO SUIT R1700G
SERIAL NUMBER SBR/XBR



Part No: 10015
INTERFACE CM2200
TO SUIT ATLAS ST1520



Part No: 3495
INTERFACE CM2200
TO SUIT SANDVIK LHD



Part No: 7531
INTERFACE TO SUIT R1600G/
R1700G SERIAL NUMBER 9PP AND
8XZ



Part No: 8025
INTERFACE TO SUIT
R3000H/R2900G/R1300G



Part No: 8861
INTERFACE TO SUIT
CAT R1600H (PCB VERSION)

ANALOGUE AUTOMATION AND REMOTE CONTROL MAJOR MACHINE COMPONENTS

REMOTE COMPONENT ENCLOSURES

Remote component enclosures ensure remote and automation hardware is sealed from the environmental elements and provide a centralised location for harnessing which in turn, improves reliability and assists maintenance personnel.



Part No: 10806
REMOTE COMPONENT
ENCLOSURE TO SUIT SANDVIK
LH410/514/517/621



Part No: 12348
REMOTE COMPONENT
ENCLOSURE TO SUIT R1300



Part No: 12883
REMOTE COMPONENT
ENCLOSURE TO SUIT SANDVIK
LH203/208 AND 151



Part No: 10685
ENCLOSURE REMOTE
COMPONENTS

ANALOGUE AUTOMATION AND REMOTE CONTROL MINOR MACHINE COMPONENTS

MACHINE ANCILLARY PARTS

A selection of machine ancillary parts to suit our range of ControlMaster® products.



Part No: 10041
PROTECTIVE SCANNER COVER



Part No: 10266
WASHER SPRING M8 ZINC



Part No: 10267
WASHER FLAT M8 ZINC



Part No: 10268
WASHER FLAT M10 ZINC



Part No: 10510
CONNECTOR BUSSED RECP 4 PIN



Part No: 10783
ADAPTOR 7/8 UNOM-1/4NPTF



Part No: 11418
SCREW M4*12MM PAN/XR
G304A/2



Part No: 11513
PLUG FEM 6 SOCKET
BAY CRIMP



Part No: 12596
REMOTE
SELECT BOX



Part No: 14411
PINCH WELD U
CHANNEL EDGE



Part No: 15776
ANTENNA WHIP
2.4 TO 2.5GHZ



Part No: 3083
LABEL START ISOLATOR (RED)



Part No: 3190
ROD TIE CABLE 200MM LONG



Part No: 3307
LOCKING BEADED TIE



Part No: 3710
ROD TIE CABLE 400MM LONG



Part No: 3727
BOLT M6 X 16 HEX G304



Part No: 3864
M8 FLAT WASHER G304



Part No: 4396
WASHER M10 SPRING



Part No: 4926
SCREW CAP M6*40MM G316



Part No: 5073
M8*25MM BOLT ZINC DI



Part No: 5218
ALUMINIUM TELEREMOTE/
GUIDANCE CIRCUIT BREAKER
LABEL

PRODUCT IMAGE
UNAVAILABLE

Part No: 5572
NUT HEX M10 UNC



Part No: 5575
M8*30MM HEX BOLT



Part No: 5648
TELEREMOTE DASH SWITCH KIT



Part No: 6061
ROD TIE CABLE 300MM LONG



Part No: 7119
WASHER FLAT M10 ZINC COATED



Part No: 7124
BOLT M10*25MM UNC



Part No: 7133
CARTON A3 WHITE
425X300X254MM



Part No: 7321
INSULATOR TO SUIT H2593 FLAG
TERM



Part No: 7485
SCREW 5/32*1UNC G304



Part No: 7917
BOLT M10*50MM ZINC

PRODUCT IMAGE
UNAVAILABLE

Part No: 7918
BOLT M8*20MM ZINC



Part No: 9360
SILENCER AIR PLASTIC 1/4"



Part No: 9698
WASHER M8 SPRING G316



Part No: 9744
WASHER M6 FLAT G304/A2



Part No: 9746
NUT M6 NYLON LOCKING G304/
A2



Part No: 9749
WASHER M4 FLAT G304/A2



Part No: 9750
NUT M4 NYLON LOCKING G304/A2



Part No: 0211
CABLE TIE 270 X 4.8MM



Part No: 0321
OLFLEX CABLE 7
CORE 1.0MM 110 SERIES



Part No: 0513
TERMINAL NON INSULATED
SPADE SINGLE ENTRY 6.3MM
FEMALE



Part No: 0797
TERMINAL COPPER LUG
M8 X 16MM



Part No: 1003
TERMINAL INSULATED
EYE BLUE 8.2MM



Part No: 1006
TERMINAL INSULATED
EYE BLUE 10.5MM



Part No: 1152
TERMINAL NON INSULATED
SPADE FLAG TERMINAL 6.3MM
FEMALE



Part No: 12458
LED LAMP MULTI VOLTAGE 20W
HEAVY DUTY INCLUDING SINGLE
POST MOUNT KIT



Part No: 1677
HOURMETER GAUGE 12 / 24V -
DATCON # 110190



Part No: 1700
BATTERY ISOLATOR 24V DUAL
POLE INDEX PIN - COLE HERSEE
75910



Part No: 1772
CIRCUIT BREAKER MANUAL
RESET 10A



Part No: 2076
CONTACT SOCKET # 16 (FVT)



Part No: 2095
CONTACT PIN # 16 (FVT)



Part No: 2118
BLOCKING CONTACT TO SUIT #
16 CONTACT



Part No: 2142
CABLE TIE
200 X 2.5MM



Part No: 3072
SWITCH LEVEL OIL CAPACITIVE
1/4 NPT THREAD SIZE



Part No: 3105
HEATSHRINK RESIN LINED DUAL
WALL 9 - 3MM BLACK



Part No: 3114
BOOT TO SUIT DRC 24 SERIES
PLUGS DEUTSCH # DRC24-BT



Part No: 3177
REMOVAL TOOL
16 BLUE



Part No: 3381
AERIAL UNITY MAG
BASE DATA



Part No: 3829
AIR SOLENOID VALVE 24V 2 PORT
NORMALLY CLOSED



Part No: 4055
DT SERIES CONNECTOR
KIT 12 TERMINAL



Part No: 4056
DT SERIES CONNECTOR KIT
8 TERMINAL



Part No: 4057
DT SERIES CONNECTOR KIT
6 TERMINAL



Part No: 4058
DT SERIES CONNECTOR KIT
4 TERMINAL



Part No: 4059
DT SERIES CONNECTOR KIT
3 TERMINAL



Part No: 4060
DT SERIES CONNECTOR KIT
2 TERMINAL



Part No: 4063
BACKSHELL TO SUIT 2022
12 SOCKET STRAIGHT



Part No: 4616
CABLE PLUG N MALE/RG58
CRIMP (CABLE 7293)



Part No: 5075
HEATSHRINK RESIN LINED DUAL
WALL 19 - 6MM BLACK



Part No: 5682
CONTACT PIN # 16 (4MM)
GREEN BAND



Part No: 6418
REMOVAL TOOL # 16 LIGHT
BLUE THIN WALL



Part No: 6700
CABLE TIE 390 X 7.6MM



Part No: 7367
BACKSHELL TO SUIT 2010 8
SOCKET STRAIGHT



Part No: 7444
HEATSHRINK RESIN LINED DUAL
WALL 25 - 8MM BLACK



Part No: 7515
HEATSHRINK RESIN LINED DUAL
WALL 6 - 2MM BLACK



Part No: 7627
DENSYL TAPE # 610 50MM X 10M



Part No: 8531
AERIAL UNITY MAG BASE VIDEO



Part No: 8934
CONTACT SOCKET # 16 (4MM)
GREEN BAND



Part No: 9619
HEATSHRINK RESIN LINED DUAL
WALL 3 - 0.6MM BLACK



Part No: 9853
HEATSHRINK RESIN LINED DUAL
WALL 13 - 4MM BLACK



Part No: 9954
NYLON GLAND 20MM 4.4 -
13.4MM

MACHINE BRACKETS

Brackets to suit a variety of mounting locations on machinery.



Part No: 12631
COVER FOR GUIDANCE
SCANNER

PRODUCT IMAGE
UNAVAILABLE

Part No: 10240
KIT BOLT MOUNT TO
SUIT 4391



Part No: 10649
COUPLER TO SUIT STEER
SENSOR 6060



Part No: 12629
REAR SCANNER MOUNT



Part No: 12634
SCANNER AND CAMERA MOUNT
FOR SANDVIK LOADERS



Part No: 12641
CAMERA MOUNT



Part No: 12647
MOUNT WELD ON ARTIC SENSOR

PRODUCT IMAGE
UNAVAILABLE

Part No: 16075
CAMERA MOUNT, SUITABLE FOR
MULTIPLE MOUNTING OPTIONS



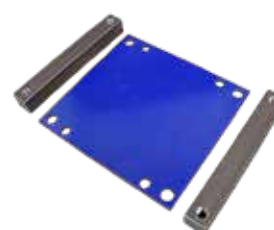
Part No: 4391
SOCKET RX MOUNTING FOOT



Part No: 6047
GUIDANCE ARTICULATION
SENSOR MOUNT (ALTERNATE)



Part No: 8498
MOUNT POLE TO SUIT
GUIDANCE



Part No: 9835
MOUNT TO SUIT 9813



Part No: 11040
SCANNER AND MOUNT
(GENERIC)



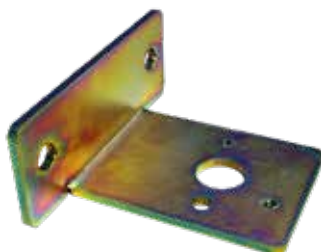
Part No: 2953
MOUNT HEAVY DUTY TO SUIT DT
SERIES DEUTSCH PLUGS (METAL)



Part No: 3794
LOCKOUT BRACKET YELLOW
HINGE STYLE TO SUIT 1700



Part No: 4110
MOUNT HEAVY DUTY OFFSET TO
SUIT DT SERIES DEUTSCH PLUGS
(METAL)



Part No: 4300
MOUNT BRACKET RIGHT ANGLE
TO SUIT 1700



Part No: 4778
MOUNT TO SUIT DT SERIES
CONNECTOR (8 CONTACT ONLY)
DEUTSCH # 1011-027-0805

ANALOGUE AUTOMATION AND REMOTE CONTROL MINOR MACHINE COMPONENTS

MACHINE HARNESSES

A selection of machine harnesses/looms to suit our range of ControlMaster® products.



Part No: 10177
LOOM TELEREMOTE CAMERA
12MTRS



Part No: 10394
LOOM TELEREMOTE LIGHTING
CAT



Part No: 11963
ARX2200 RECEIVER TO
INTERFACE LOOM



Part No: 12176
8M LOOM FOR GUIDANCE
SCANNER

PRODUCT IMAGE
UNAVAILABLE

Part No: 12457
FREQUENCY SENSING LOOM TO
SUIT GUIDANCE



Part No: 12547
LOOM GUIDANCE
FREQ SENSE



Part No: 12558
GENERIC LOOM TO SUIT
ARX2200 (RECEIVER)



Part No: 12645
LOGICS EXTENSION
LOOM R1700/R2900



Part No: 12646
ENGINE MONITORING
LOOM TO SUIT CAT
R1600, R1700, R2900, R3000



Part No: 12648
HARNESS PROP BRAKE
CM2200



Part No: 12687
12M LOOM FOR GUIDANCE
SCANNER 12M



Part No: 14527
LOOM M12 90D ETH TO
6P BAYONET

PRODUCT IMAGE
UNAVAILABLE



Part No: 7169
CAMERA LOOM
6M



Part No: 7806
6M LOOM FOR
GUIDANCE SCANNER



Part No: 8122
GUIDANCE CONTROL UNIT
TO MACHINE LOOM



Part No: 8273
TELE/GUIDANCE DASH LOOM
TO SUIT CAT MACHINES

ANALOGUE AUTOMATION AND REMOTE CONTROL MINOR MACHINE COMPONENTS

MACHINE HYDRAULICS

A selection of machine hydraulics to suit our range of ControlMaster® products.



Part No: 0392
PROPORTIONAL VALVE TO SUIT
CAT STEERING AND IMPLEMENTS



Part No: 0393
COIL 24V TO SUIT 0392 PROP
VALVE



Part No: 0459
COIL TO SUIT CAT STEERING AND
IMPLEMENT VALVES (FLY LEAD)



Part No: 10093
SENSOR PRESS NPN
0-100 BAR



Part No: 12763
CAT STEERING MANIFOLD
(MANIFOLD ONLY)

PRODUCT IMAGE
UNAVAILABLE

Part No: 12765
REPLACEMENT STEERING
MANIFOLD FOR CAT LOADERS
(FULL KIT)

PRODUCT IMAGE
UNAVAILABLE



Part No: 13117
R2900G/R3000H
PROP BRAKE

Part No: 13534
KIT PROP BRAKE
MANIFOLD 635PSI



Part No: 10767
DIN PLUG WITH LED AND
FLYING LEAD



Part No: 3829
AIR SOLENOID VALVE 24V 2 PORT
NORMALLY CLOSED

REMOTE COMPONENT ENCLOSURE PARTS



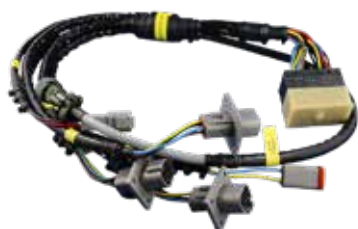
Part No: 10684
SLIDING HOLDING LATCH TO
SUIT RCE



Part No: 10686
RG58 LOOM 500M N TYPE
CONNECTOR



Part No: 10687
INTERFACE TO BULKHEAD LOOM



Part No: 10689
GUIDANCE CONTROL UNIT TO
BULKHEAD LOOM



Part No: 10690
GUIDANCE CONTROL UNIT TO
SCANNER BULKHEAD LOOM



Part No: 10692
TELE TRANSMITTER TO
BULKHEAD LOOM



Part No: 10693
GAS STRUT (RCE LIFTING)



Part No: 10695
ENCLOSURE CAT YELLOW



Part No: 12479
DOCUMENT POUCH TO SUIT RCE



Part No: 9841
UPS TO SUIT GUIDANCE
CONTROL UNIT AND OLDER
RECEIVERS



Part No: 13451
SHALLOW NYLON VL LAMP
MULTI-FUNCTION BLUE (FLANGE
MOUNT)



Part No: 13453
SHALLOW NYLON VL LAMP
MULTI-FUNCTION AMBER
(FLANGE MOUNT)



Part No: 1677
HOURMETER GAUGE 12 / 24V -
DATCON # 110190

AUTOMATION SOLUTION

The ControlMaster® Automation systems have been designed to reduce impact damage to the machine while increasing the general tramming speed of the machine to improve overall operational efficiency. The operator directs the machine forward or backward. Timely input left or right directs the machine into a drive junction.

The steering, braking and speed of the machine are automatically controlled through the joystick position, minimum width of the drive and the look-ahead distance. The system can be switched on or off from the joystick control unit and the digital display will tell the operator whether the system is on or off. Automation will allow second or higher gears to be selected to improve the speed of tramming cycles depending on the length of the drive.

ControlMaster® Automation will assist in avoiding the walls and major obstacles whilst keeping the loader in the optimal tramming path.

The system requires minimal upgrade for existing ControlMaster® Teleremote customers and with no additional communications setup costs, the system is a cost-effective semi-automated solution for mining customers.

If you require any further information please contact your nearest Remote Control Technologies branch.



Part No:
UNDERGROUND LOADER
GUIDANCE SOLUTION



Part No:
UNDERGROUND TRUCK
GUIDANCE SOLUTION



Part No: 15357
CONTROL GUIDANCE UNIT 2.0

AUTOMATION AND REMOTE CONTROL SOLUTIONS

LINE-OF-SIGHT REMOTE CONTROL

RCT's Line-of-Sight remote controls are suitable for surface or underground mobile machine applications. The system is built for operator comfort and safety, allowing for longer periods of operation.



Part No: 11739
ATX1000 TRANSMITTER TO SUIT
LOADER



Part No: 13703
MRX1000 RECEIVER TO SUIT
LOADER



Part No: 14408
ATX/ARX2200 TO SUIT DOZER
REGION 2/3

AUTOMATION AND REMOTE CONTROL SOLUTIONS

PORTABLE TELEREMOTE CONTROL

The ControlMaster® Portable Recovery Teleremote system works by using cameras on board the machine to provide the operator with full vision of the machine's movements.

The operator controls the machine via the vision from the LCD screen which is positioned on the carry frame. The camera views can be manually switched from the LCD.

The ControlMaster® Modular Teleremote Assembly (MTA) is an extension of the portable Teleremote system.

A dual-channel TV monitoring package and stand replaces the smaller LCD allowing the operator to have a clearer and more precise vision of the machine's operations.

The MTA is designed for use in semi-permanent mining production tasks, whereby the operator needs to be comfortably positioned to operate the machine for long periods.



Part No: 12187
PORTABLE TELE SOLUTION TO
SUIT ATX



Part No: 15197
PORTABLE TELE KIT
(1 CAMERA)

PRODUCT IMAGE
UNAVAILABLE

Part No: 15329
PORTABLE TELE KIT
(2 CAMERAS)

TELEREMOTE CONTROL

RCT manufactures a broad range of ControlMaster® Remote Control systems suitable for surface and underground mining applications.

RCT has designed customised remotes for application on machines such as loaders, drills, dozers, excavators, rock breakers, cherry pickers, skid steers, water cannons and much more. ControlMaster® Remote Control systems comply with Australian Standard AS4240. The Teleremote range are designed to be utilised not only in Line-of-Sight applications, but from further distances in the comfort of an Automation Centre.



Part No: 14408

ATX/ARX2200 TO

SUIT DOZER

REGION 2/3



A RCT Remote Operators Centre (ROC) operating on a coal stockpile.

AUTOMATION CONTROL SPARE PARTS AND ACCESSORIES

AERIALS AND MOUNTS

A selection of aerials and antenna mounts designed and built to suit our range of Control Master® products.



Part No: 12173
MOUNT ATX MONITOR



Part No: 3258
CABLE ANTENNA BASE & M45T

AUTOMATION CONTROL SPARE PARTS AND ACCESSORIES

BATTERIES AND CHARGERS

Fully sealed batteries and a purpose-built charger developed to sustain ControlMaster® products with a constant voltage for extended periods of time.



Part No: 6085
CHARGER BATTERY LITHIUM ION



Part No: 6400
BATTERY PACK 12V 6.9AH L/ION



Part No: 10710
BATTERY LITHIUM ION TO SUIT
ATX2200



Part No: 11777
CHARGER BATTERY DUAL ATX

AUTOMATION CONTROL SPARE PARTS AND ACCESSORIES

CARRY FRAME AND SHOULDER HARNESSSES

It is strongly recommended that only approved parts be used for all ControlMaster® Remote Control systems.



Part No: 10674
CARRY FRAME TO SUIT ATX2200
TRANSMITTER

AUTOMATION CONTROL SPARE PARTS AND ACCESSORIES

OPERATOR STATION COMPONENTS

It is strongly recommended that only approved parts be used for all ControlMaster® Remote Control systems.



Part No: 12891
15" MONITOR TO SUIT
PLATFORM



Part No: 8252
MODULAR TELE ASSEMBLY TO
SUIT MODULAR PLATFORM



Part No: 10072
LEFT JOYSTICK TO SUIT CHAIR



Part No: 10095
RIGHT JOYSTICK TO SUIT CHAIR



Part No: 12002
DOCKING STATION REGION 3



Part No: 12003
CHAIR TRANSMITTER TO SUIT
SURFACE CONTROL STATION



Part No: 14172
AUTOMATION CONTROLLER



Part No: 15508
RCT CONNECT MANAGER



Part No: 7126
VIDEO RECEIVER (ANALOGUE)



Part No: 17050
 INJECTOR POWER RCT CONNECT
 DIGITAL COMMS SYSTEM



Part No: 12772
 27" MONITOR
 METAL FRAME

AUTOMATION CONTROL SPARE PARTS AND ACCESSORIES

PORTABLE TELEREMOTE COMPONENTS

The ControlMaster® Portable Recovery Teleremote system works by using cameras on board the machine to provide the operator with the vision of the machine's movements.

The operator controls the machine via the vision from the LCD screen which is positioned on the carry frame. The camera views can be manually switched at the LCD.



Part No: 15150
 MONITOR PORTABLE TELE
 RECEIVER

SERVICE AND TEST KITS

RCT manufactures purpose-built service and test kits for its remote control systems. The service and test kits allow on-site personnel to quickly and effectively test remote equipment for faults, perform operating diagnostics and replace worn components with minimal downtime.

RCT manufactures service kits for both standard and customised remote control systems.



Part No: 10278
COMMUNICATION PARTS FIELD
SERVICE KIT



Part No: 11657
ATX/ARX2200 TEST KIT LEVELS 1
TO 3



Part No: 15209
ATX/ARX REMOTE SET TEST UNIT,
INCLUDES TOUGHBOOK AND
PRELOADED SOFTWAREC

PRODUCT IMAGE
UNAVAILABLE



Part No: 15980
NETWORK TEST TOOL

Part No: 7273
ATX/ARX2200 REMOTE CONTROL
TEST UNIT

AUTOMATION CONTROL SPARE PARTS AND ACCESSORIES

TELEREMOTE COMMUNICATIONS FITTINGS AND EQUIPMENT

To ensure a fault-free operation it is highly recommended that only approved fittings be used to connect the communications systems on ControlMaster® Remote Control systems.

The fittings used have been carefully selected to ensure the best transfer of data and video signals.



Part No: 0013
BULKHEAD BNC JACK/RG174
(CABLE 0261)



Part No: 1055
CABLE PLUG BNC PLUG/RG213
CLAMP



Part No: 1056
CABLE PLUG BNC JACK/RG58
CRIMP (CABLE 7293)



Part No: 1061
CABLE PLUG N MALE/RG213
CRIMP



Part No: 0220
ADAPTOR BNC JACK/UHF MALE



Part No: 0222
ADAPTOR BNC PLUG/UHF
FEMALE



Part No: 0258
BULKHEAD BNC JACK/BNC JACK



Part No: 0259
CABLE PLUG BNC PLUG/90°
RG316 CLAMP (CABLE 0684)



Part No: 0264
BULKHEAD BNC JACK/RG58
CRIMP (CABLE 7293)



Part No: 0940
CONNECTOR MALE N TYPE
(CABLE 0938)



Part No: 0941
ADAPTOR N MALE/N MALE



Part No: 1067
CABLE PLUG TNC PLUG/RG58
CRIMP (CABLE 7293)



Part No: 4618
ADAPTOR 90° N MALE/N FEMALE



Part No: 5035
CABLE PLUG N MALE/1/2" HELIAX
(CABLE 8905)



Part No: 5036
CABLE PLUG N FEMALE/1/2" HELIAX (CABLE 8905)



Part No: 5730
BULKHEAD N FEMALE/N FEMALE



Part No: 7425
CABLE PLUG BNC PLUG/RG58
CLAMP (CABLE 7293)



Part No: 7426
CABLE PLUG BNC PLUG/90° RG58
CLAMP (CABLE 7293)



Part No: 7434
CABLE PLUG BNC PLUG/RG58
CRIMP (CABLE 7293)



Part No: 7540
CABLE PLUG TV MALE/RG59
CLAMP (CABLE 4498)



Part No: 8259
BULKHEAD N FEMALE/RG58
CRIMP (CABLE 7293)



Part No: 8402
ADAPTOR BNC MALE TO N TYPE
FEMALE



Part No: 9177
CABLE PLUG N FEMALE/RG58
CRIMP (CABLE 7293)



Part No: 9194
CABLE PLUG N MALE/RG213
CLAMP



Part No: 9268
CABLE PLUG N FEMALE/RG213
CLAMP



Part No: 9650
ADAPTOR N MALE/UHF FEMALE



Part No: 9663
ADAPTOR N MALE/BNC JACK



Part No: 1128
CABLE PLUG N MALE/RG8 CRIMP
(CABLE 1127)



Part No: 4616
CABLE PLUG N MALE/RG58
CRIMP (CABLE 7293)



Part No: 4619
ADAPTOR N FEMALE/N
FEMALE

AUTOMATION CONTROL SPARE PARTS AND ACCESSORIES

TELEREMOTE COMMUNICATIONS PARTS AND EQUIPMENT

It is highly recommended that only approved telecommunications parts be used for ControlMaster® Remote Control systems

These telecommunications parts have been carefully selected to ensure the best transfer of data and video signals.



Part No: 2564
DUMMY LOAD 15 WATT



Part No: 3292
CABLE SET 4M RG58 N TYPE
MALE BNC PLUG



Part No: 4092
RF SWITCH 3 WAY



Part No: 4305
RF SWITCH 2 WAY

PRODUCT IMAGE
UNAVAILABLE

Part No: 5371
CABLE SET 3M INCLUDES N TYPE
CONNECTORS



Part No: 0450
POWER DIVIDER



Part No: 15168
RCT CONNECT WIRELESS
ACCESS POINT



Part No: 4617
STAND OFF WALL MOUNT

PRODUCT IMAGE
UNAVAILABLE

Part No: 5370
CABLE SET 2M INCLUDES N TYPE
CONNECTORS



Part No: 5945
CABLE SET 70M INCLUDES N
TYPE CONNECTORS



Part No: 1127
COAXIAL CABLE NON RADIATING
RG8 - 10MM - 300M ROLLS ONLY



Part No: 8905
COAXIAL CABLE NON RADIATING
1/2" - 500M ROLLS ONLY

AUTOMATION CONTROL SPARE PARTS AND ACCESSORIES

TOOLS AND ACCESSORIES

It is recommended that only approved tools and accessories be used for ControlMaster® Remote Control systems.



Part No: 11579
REPLACEMENT BLADE SET TO
SUIT PART # 11542



Part No: 11542
COAXIAL STRIPPING TOOL TO
SUIT RG8 CABLE (1127)



Part No: 2353
AMALGAMATING TAPE 25MM



Part No: 2800
ELECTROGUARD GREASE 50G
SYRING



Part No: 5411
COAXIAL TERMINATION KIT WITH
CASE



Part No: 8138
TRIMMING TOOL TO SUIT
COAXIAL CABLE



Part No: 8892
CRIMP TOOL # 16 CONTACTS
RATCHET AFTER MARKET



Part No: 9659
O'RING VALVE GREASE 100G

AUTOMATION CONTROL SPARE PARTS AND ACCESSORIES

TRANSIT CASE

It is recommended the use of RCT transit cases for the transport and storage of ControlMaster® equipment.



Part No: 12357
CASE TRANSIT TO SUIT ATX KIT
REV02

AUTOMATION COMPONENTS

ControlMaster® Automation systems feature scalable on board components to enable production gains across many different operating applications.



Part No: 10685
ENCLOSURE REMOTE
COMPONENTS



Part No: 15357
CONTROL GUIDANCE UNIT 2.0



Part No: 6060
SENSOR STEER GUIDANCE SER 2



Part No: 9290
SCANNER IP67 50M RANGE



Part No: 11040
SCANNER AND MOUNT
(GENERIC)

CAMERAS

RCT's remote control machine components include a variety of cameras. These cameras have been designed to operate in the harshest conditions. A selection of various angle lenses can be chosen to suit a variety of applications. All cameras are rated to IP69 and designed to deliver high-quality video images under extreme conditions both underground and on the surface.

- Multi voltage
- Current draw of 110mA
- Sealed to IP69
- Reverse polarity and short circuit protected
- Optimised lens angle for underground mining
- Utilises CCD HAD II technology



Part No: 16419
IP CAMERA, 80 DEGREE, HIGH
RESOLUTION, H.265



Part No: 16420
IP CAMERA, 100 DEGREE, HIGH
RESOLUTION, H.265



Part No: 14220
BALL CAMERA IP69K HEAVY
DUTY

DIGITAL AUTOMATION AND REMOTE CONTROL MAJOR MACHINE COMPONENTS

ELECTRICAL INTERFACES

Interfaces are manufactured to integrate ControlMaster® Remote and Teleremote solutions into Original Equipment Manufacturer (OEM) machines. For further technical information please refer to your nearest RCT branch.

- Robust alloy enclosure
- Military-style connectors
- Internal circuit breakers
- Purpose-built for each machine model
- Available in 12 or 24 volt

Electrical interfaces are customised to suit each make of machine.



Part No: 10015
INTERFACE CM2200 TO SUIT
ATLAS ST1520



Part No: 3495
INTERFACE CM2200 TO SUIT
SANDVIK LHD



Part No: 7531
INTERFACE TO SUIT R1600G/
R1700G SERIAL NUMBER 9PP AND
8XZ



Part No: 8025
INTERFACE TO SUIT R3000H/
R2900G/R1300G



Part No: 8861
INTERFACE TO SUIT CAT R1600H
(PCB VERSION)

DIGITAL AUTOMATION AND REMOTE CONTROL MAJOR MACHINE COMPONENTS

MACHINE BRACKETS

Brackets to suit a variety of mounting locations on machinery.



Part No: 12641
CAMERA MOUNT



Part No: 8498
MOUNT POLE TO SUIT
GUIDANCE

REMOTE COMPONENT ENCLOSURES

Remote component enclosures ensure remote and automation hardware is sealed from the environmental elements and provide a centralised location for harnessing, improving reliability and helping maintenance personnel.



Part No: 10685
ENCLOSURE REMOTE
COMPONENTS



Part No: 10806
REMOTE COMPONENT
ENCLOSURE TO SUIT SANDVIK
LH410/514/517/621

VISION TRANSMITTERS

Receive video signals and broadcast images from the front and rear cameras of the machines.

PRODUCT IMAGE
UNAVAILABLE



Part No: 16788
VISION SERVER 4 CH DIGITAL
MAX 4 ANALOGUE CAMERA

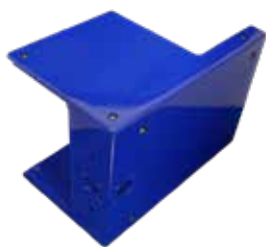


Part No: 15149
TRANSMITTER PORTABLE VIDEO,
2.4GHZ, 2 CAMERA INPUT

Part No: 16800
SERVER DIGITAL VISION 4
CAMERA IP CAMERAS

MACHINE ANCILLARY PARTS

A selection of machine ancillary parts to suit our range of ControlMaster® products.



Part No: 11041
MOUNT T/S 11040 BODY, CRADLE
& CANNON PLATE



Part No: 15678
MACHINE CLIENT SUITS DIGITAL
MACHINES



Part No: 0211
CABLE TIE
270 X 4.8MM



Part No: 0321
OLFLEX CABLE 7 CORE 1.0MM
110 SERIES



Part No: 0513
TERMINAL NON INSULATED
SPADE SINGLE ENTRY 6.3MM
FEMALE



Part No: 0797
TERMINAL COPPER LUG M8 X
16MM²



Part No: 1003
TERMINAL INSULATED EYE BLUE
8.2MM



Part No: 10041
PROTECTIVE SCANNER COVER



Part No: 1006
TERMINAL INSULATED EYE BLUE
10.5MM



Part No: 10266
WASHER SPRING M8 ZINC



Part No: 10267
WASHER FLAT M8 ZINC



Part No: 10268
WASHER FLAT M10 ZINC



Part No: 10510
CONNECTOR BUSSED RECP 4 PIN



Part No: 10783
ADAPTOR 7/8 UNOM-1/4NPTF



Part No: 11418
SCREW M4*12MM PAN/XR
G304A/2



Part No: 11513
PLUG FEM 6 SOCKET BAY CRIMP



Part No: 1152
TERMINAL NON INSULATED
SPADE FLAG TERMINAL 6.3MM
FEMALE



Part No: 16652
LAMP LED M/V 20W H/D POST
POST MOUNT ONLY



Part No: 12596
REMOTE SELECT BOX



Part No: 14411
PINCH WELD U CHANNEL EDGE



Part No: 15776
ANTENNA WHIP 2.4 TO 2.5GHZ



Part No: 1677
HOURMETER GAUGE 12 / 24V -
DATCON # 110190



Part No: 1700
BATTERY ISOLATOR 24V DUAL
POLE INDEX PIN - COLE HERSEE
75910



Part No: 1772
CIRCUIT BREAKER MANUAL
RESET 10A



Part No: 2076
CONTACT SOCKET # 16 (FVT)



Part No: 2095
CONTACT PIN # 16 (FVT)



Part No: 2118
BLOCKING CONTACT TO
SUIT # 16 CONTACT



Part No: 2142
CABLE TIE 200 X 2.5MM



Part No: 3072
SWITCH LEVEL OIL CAPACITIVE
1/4 NPT THREAD SIZE



Part No: 3083
LABEL START ISOLATOR (RED)



Part No: 3105
HEATSHRINK RESIN LINED DUAL
WALL 9 - 3MM BLACK



Part No: 3114
BOOT TO SUIT DRC 24 SERIES
PLUGS DEUTSCH # DRC24-BT



Part No: 3177
REMOVAL TOOL # 16 BLUE



Part No: 3190
ROD TIE CABLE 200MM LONG



Part No: 3307
LOCKING BEADED TIE



Part No: 3710
ROD TIE CABLE 400MM LONG



Part No: 3727
BOLT M6 X 16 HEX G304



Part No: 3829
AIR SOLENOID VALVE 24V 2 PORT
NORMALLY CLOSED



Part No: 3864
M8 FLAT WASHER G304



Part No: 4055
DT SERIES CONNECTOR KIT
12 TERMINAL



Part No: 4056
DT SERIES CONNECTOR KIT
8 TERMINAL



Part No: 4057
DT SERIES CONNECTOR KIT
6 TERMINAL



Part No: 4058
DT SERIES CONNECTOR KIT
4 TERMINAL



Part No: 4059
DT SERIES CONNECTOR KIT
3 TERMINAL



Part No: 4060
DT SERIES CONNECTOR KIT
2 TERMINAL



Part No: 4063
BACKSHELL TO SUIT 2022
12 SOCKET STRAIGHT



Part No: 4396
WASHER M10 SPRING



Part No: 4616
CABLE PLUG N MALE/RG58
CRIMP (CABLE 7293)



Part No: 4926
SCREW CAP M6*40MM G316



Part No: 5073
M8*25MM BOLT ZINC DI



Part No: 5075
HEATSHRINK RESIN LINED DUAL
WALL 19 - 6MM BLACK



Part No: 5218
ALUMINIUM TELEREMOTE/
GUIDANCE CIRCUIT BREAKER
LABEL

PRODUCT IMAGE
UNAVAILABLE

Part No: 5572
NUT HEX M10 UNC



Part No: 5575
M8*30MM HEX BOLT



Part No: 5648
TELEREMOTE DASH
SWITCH KIT



Part No: 5682
CONTACT PIN # 16 (4MM)
GREEN BAND



Part No: 6061
ROD TIE CABLE
300MM LONG



Part No: 6418
REMOVAL TOOL # 16 LIGHT
BLUE THIN WALL



Part No: 6700
CABLE TIE 390 X 7.6MM



Part No: 7119
WASHER FLAT M10
ZINC COATED



Part No: 7124
BOLT M10*25MM
UNC



Part No: 7133
CARTON A3 WHITE
425X300X254MM



Part No: 7321
INSULATOR TO SUIT H2593
FLAG TERM



Part No: 7367
BACKSHELL TO SUIT 2010
8 SOCKET STRAIGHT



Part No: 7444
HEATSHRINK RESIN LINED DUAL
WALL 25 - 8MM BLACK



Part No: 7485
SCREW 5/32*1UNC G304



Part No: 7515
HEATSHRINK RESIN LINED DUAL
WALL 6 - 2MM BLACK



Part No: 7627
DENSYL TAPE # 610 50MM X 10M



Part No: 7917
BOLT M10*50MM ZINC

PRODUCT IMAGE
UNAVAILABLE



Part No: 8531
AERIAL UNITY MAG
BASE VIDEO



Part No: 8934
CONTACT SOCKET # 16
(4MM) GREEN BAND



Part No: 9360
SILENCER AIR PLASTIC 1/4"



Part No: 9619
HEATSHRINK RESIN LINED DUAL
WALL 3 - 0.6MM BLACK



Part No: 9698
WASHER M8 SPRING
G316



Part No: 9744
WASHER M6 FLAT
G304/A2



Part No: 9746
NUT M6 NYLON LOCKING
G304/A2



Part No: 9749
WASHER M4 FLAT
G304/A2



Part No: 9750
NUT M4 NYLON LOCKING
G304/A2



Part No: 9853
HEATSHRINK RESIN LINED DUAL
WALL 13 - 4MM BLACK



Part No: 9954
NYLON GLAND 20MM
4.4 - 13.4MM

MACHINE BRACKETS

Brackets to suit a variety of mounting locations on machinery.



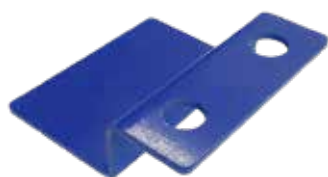
Part No: 14544
CAMERA MOUNT SUITABLE FOR
HIGH MOUNTING ON MACHINES

PRODUCT IMAGE
UNAVAILABLE

Part No: 8948
CAMERA AND SCANNER MOUNT
(GENERIC)



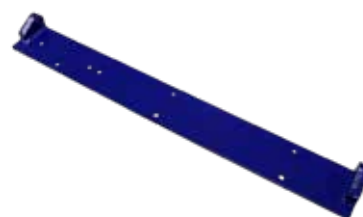
Part No: 12203
STEERING SENSOR
ALT



Part No: 13627
RCE LANDING MOUNT



Part No: 13629
RCE HINGE MOUNT SUITS
SANDVIK



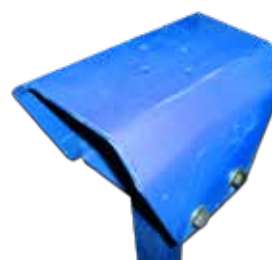
Part No: 13631
RCE MOUNT SUITS SANDVIK



Part No: 13633
RCE MOUNT (MACHINE SIDE)
SUITS SANDVIK



Part No: 13637
FRONT CAMERA MOUNT
ADAPTOR SUITS SANDVIK LH514
LH517



Part No: 5588
CAMERA MOUNT, SUITABLE FOR
MULTIPLE MOUNTING OPTIONS

PRODUCT IMAGE
UNAVAILABLE

Part No: 10240
KIT BOLT MOUNT TO SUIT 4391



Part No: 10649
COUPLER TO SUIT STEER
SENSOR 6060



Part No: 11040
SCANNER AND MOUNT
(GENERIC)



Part No: 12003
CHAIR TRANSMITTER TO SUIT
SURFACE CONTROL STATION



Part No: 12629
REAR SCANNER MOUNT



Part No: 12634
SCANNER AND CAMERA MOUNT
FOR SANDVIK LOADERS



Part No: 12641
CAMERA MOUNT

PRODUCT IMAGE
UNAVAILABLE

Part No: 16075
CAMERA MOUNT, SUITABLE FOR
MULTIPLE MOUNTING OPTIONS



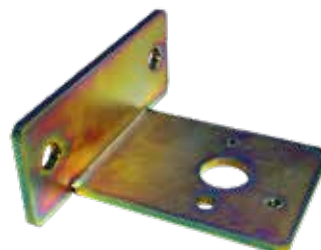
Part No: 2953
MOUNT HEAVY DUTY TO SUIT DT
SERIES DEUTSCH PLUGS (METAL)



Part No: 3794
LOCKOUT BRACKET YELLOW
HINGE STYLE TO SUIT 1700



Part No: 4110
MOUNT HEAVY DUTY OFFSET TO
SUIT DT SERIES DEUTSCH PLUGS
(METAL)



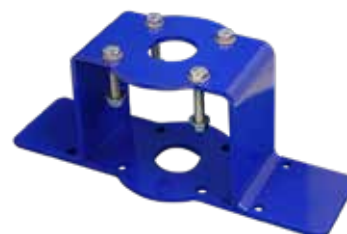
Part No: 4300
MOUNT BRACKET RIGHT ANGLE
TO SUIT 1700



Part No: 4391
SOCKET RX MOUNTING FOOT



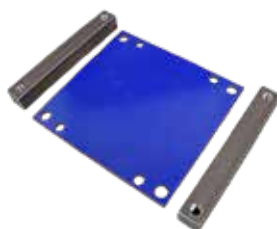
Part No: 4778
MOUNT TO SUIT DT SERIES
CONNECTOR (8 CONTACT ONLY)
DEUTSCH # 1011-027-0805



Part No: 6047
GUIDANCE ARTICULATION
SENSOR MOUNT (ALTERNATE)



Part No: 8498
MOUNT POLE TO SUIT
GUIDANCE



Part No: 9835
MOUNT TO SUIT 9813

DIGITAL AUTOMATION & REMOTE CONTROL MINOR MACHINE COMPONENTS

MACHINE HARNESSES

A selection of machine harnesses/looms to suit our range of ControlMaster® products.



Part No: 10177
LOOM TELEREMOTE CAMERA
12MTRS



Part No: 10394
LOOM TELEREMOTE LIGHTING
CAT



Part No: 11963
ARX2200 RECEIVER TO
INTERFACE LOOM



Part No: 12176
8M LOOM FOR GUIDANCE
SCANNER

PRODUCT IMAGE
UNAVAILABLE

Part No: 12457
FREQUENCY SENSING LOOM TO
SUIT GUIDANCE



Part No: 12547
LOOM GUIDANCE FREQ SENSE



Part No: 12558
GENERIC LOOM TO SUIT ARX2200
(RECEIVER)



Part No: 12629
REAR SCANNER MOUNT



Part No: 12645
LOGICS EXTENSION LOOM
R1700/R2900



Part No: 12646
ENGINE MONITORING
LOOM TO SUIT CAT
R1600,R1700,R2900,R3000



Part No: 12647
MOUNT WELD ON ARTIC SENSOR



Part No: 12648
HARNESS PROP BRAKE CM2200



Part No: 12687
12M LOOM FOR GUIDANCE
SCANNER 12M



Part No: 14527
LOOM M12 90D ETH TO 6P
BAYONET

PRODUCT IMAGE
UNAVAILABLE

Part No: 15563
START ISOLATOR HARNESS



Part No: 7169
CAMERA LOOM 6M



Part No: 7806
6M LOOM FOR GUIDANCE
SCANNER



Part No: 8122
GUIDANCE CONTROL UNIT TO
MACHINE LOOM



Part No: 8273
TELE/GUIDANCE DASH LOOM TO
SUIT CAT MACHINES

DIGITAL AUTOMATION AND REMOTE CONTROL MINOR MACHINE COMPONENTS

MACHINE HYDRAULICS

A selection of machine hydraulics to suit our range of ControlMaster® products.



Part No: 0392
PROPORTIONAL VALVE TO SUIT
CAT STEERING AND IMPLEMENTS



Part No: 0393
COIL 24V TO SUIT 0392 PROP
VALVE



Part No: 0459
COIL TO SUIT CAT STEERING AND
IMPLEMENT VALVES (FLY LEAD)



Part No: 10093
SENSOR PRESS NPN 0-100 BAR



Part No: 10767
DIN PLUG WITH LED AND FLYING
LEAD



Part No: 12763
CAT STEERING MANIFOLD
(MANIFOLD ONLY)

PRODUCT IMAGE
UNAVAILABLE

PRODUCT IMAGE
UNAVAILABLE

Part No: 12765
REPLACEMENT STEERING
MANIFOLD FOR CAT LOADERS
(FULL KIT)

Part No: 13117
R2900G/R3000H PROP BRAKE

Part No: 13534
KIT PROP BRAKE MANIFOLD
635PSI



Part No: 3829
AIR SOLENOID VALVE 24V 2 PORT
NORMALLY CLOSED

REMOTE ENCLOSURE PARTS

Parts to suit remote component enclosures.



Part No: 10684
SLIDING HOLDING LATCH TO
SUIT RCE



Part No: 10686
RG58 LOOM 500M N TYPE
CONNECTOR



Part No: 10687
INTERFACE TO
BULKHEAD LOOM



Part No: 10689
GUIDANCE CONTROL UNIT TO
BULKHEAD LOOM



Part No: 10690
GUIDANCE CONTROL UNIT TO
SCANNER BULKHEAD LOOM



Part No: 10692
TELE TRANSMITTER TO
BULKHEAD LOOM



Part No: 10693
GAS STRUT (RCE LIFTING)



Part No: 10695
ENCLOSURE CAT YELLOW



Part No: 12479
DOCUMENT POUCH TO SUIT RCE



Part No: 13451
SHALLOW NYLON VL LAMP
MULTI-FUNCTION BLUE (FLANGE
MOUNT)



Part No: 13453
SHALLOW NYLON VL LAMP
MULTI-FUNCTION AMBER
(FLANGE MOUNT)



Part No: 1677
HOURMETER GAUGE
12 / 24V - DATCON
110190



Part No: 9841
UPS TO SUIT GUIDANCE
CONTROL UNIT AND OLDER
RECEIVERS

DIGITAL AUTOMATION CENTRES

AUTOMATION CENTRE CHAIR

The RCT Automation Centre Chair is a fit-for-purpose solution that allows the operation of mobile machinery from a central location, away from the hazardous environment, via Teleremote or Automation.

The location of the joysticks and armrests allow comfort and support for extended periods of operation.

The chair is equipped with a manual hand pump to adjust the inflatable air lumbar support to ensure optimal comfort.

The chairs are used in mining sites all over the world bringing with it a new level of comfort.

- Incorporates back adjustment
- Backrest recline adjustment
- Adjustable headrest
- Seat tilt adjustment
- 200mm (7.88") fore & aft adjustment
- 60mm (2.36") independent height adjustment
- Weight range up to 225kg (496lbs)



Part No: 14324
AUTOMATION CENTRE
PLATFORM



Part No: 14333
AUTOMATION CENTRE
CHAIR



Part No: 15300
DIGITAL AUTOMATION
CENTRE

BRAKE RETRIEVAL SYSTEM

RCT designs and manufactures a range of industrial, portable, handheld and fixed application remotes. The remotes are built in accordance with the Australian Standards and are available off-the-shelf in a kit or can be customised to suit applications.



Part No: 10435
HAND HELD TRANSMITTER

HANDHELD SERIES 1000

RCT designs and manufactures a range of industrial, portable, handheld and fixed application remotes. The remotes are built in accordance with the Australian Standards and are available off-the-shelf in a kit or can be customised to suit applications.



Part No: 2340
CHARGER TO SUIT 0682



Part No: 10142
CHARGER TO SUIT 10436 AND 10143



Part No: 10143
CM1000 TX HANDHELD TRANSMITTER 12 FUNCTION



Part No: 10436
CM1000 TX HANDHELD TRANSMITTER 6 FUNCTION



Part No: 11361
BRACKET CM1000 HANDHELD



Part No: 7764
ANTENNA TO SUIT 9319



Part No: 8492
RAM MOUNT 2 1/2 INCH



Part No: 9319
CM1000 TRANSCEIVER 12/24V



Part No: 9429
EXPANSION MODULE TO SUIT
CM1000



Part No: 9637
ANTENNA BASE TO SUIT 9319

HANDHELD REMOTE CONTROL SYSTEMS: SERIES 1000

PORTABLE REMOTE WATER FILL SYSTEM

RCT designs and manufactures a range of industrial, portable, handheld and fixed application remotes. The remotes are built in accordance with the Australian Standards and are available off-the-shelf in a kit or can be customised to suit applications.



Part No: 10142
CHARGER TO SUIT 10436 AND
10143



Part No: 7764
ANTENNA TO SUIT 9319



Part No: 9637
ANTENNA BASE TO SUIT 9319

SELF CLEANING CAMERAS - TOUGHEYE 1700

The industry-leading, self-cleaning ToughEye™ range of cameras are suitable for any mining and industrial application where a clear view is critical to the success of the operation.

ToughEye™ is a field-proven, rugged, single-piece design that delivers optimal image quality via analogue and IP video outputs.

The ToughEye™ cameras provide a zero-maintenance operation and RCT can customise installations for almost any application.

Customised solutions are available.

No maintenance necessary for the rated life of the camera.



Part No: 16049
CAMERA STANDARD
100 DEGREE



Part No: 16050
CAMERA STANDARD
80 DEGREE



Part No: 16051
CAMERA CORROSION RESISTANT
100 DEGREE



Part No: 16052
CAMERA CORROSION
RESISTANT 80 DEGREE

PRODUCT IMAGE
UNAVAILABLE

Part No: 16053
MAIN CABLE 1 METER EXTREME
TEMPERATURE RATED

PRODUCT IMAGE
UNAVAILABLE

Part No: 16054
MAIN CABLE 5 METER EXTREME
TEMPERATURE RATED

SELF CLEANING CAMERA SYSTEMS

SELF CLEANING CAMERAS - TOUGHEYE 3100

The industry-leading, self-cleaning ToughEye™ range of cameras are suitable for any mining and industrial application where a clear view is critical to the success of the operation.

ToughEye™ is a field-proven, rugged, single-piece design that delivers optimal image quality via analogue and IP video outputs. The ToughEye™ cameras provide a zero-maintenance operation and RCT can customise installations for almost any application.

Customised solutions are available. No maintenance necessary for the rated life of the camera.

**Part No: 15724**

80° CAMERA STANDARD 60K 5°C TO 50°C (41°F TO 122°F) DUAL OUTPUT 60000 CYCLE

**Part No: 15725**

80° CAMERA STANDARD 60K IR 5°C TO 50°C (41°F TO 122°F) DUAL OUTPUT 60000 CYCLE

**Part No: 15726**

80° CAMERA STANDARD 90K H/D 5°C TO 50°C (41°F TO 122°F) DUAL OUTPUT 90000 CYCLE

**Part No: 15727**

80° CAMERA STANDARD 90K IR H/D 5°C TO 50°C (41°F TO 122°F) DUAL OUTPUT 90000 CYCLE

**Part No: 15728**

80° CAMERA EXTREME 60K LENS -40°C TO 50°C (-40°F TO 122°F) DUAL OUTPUT 60000 CYCLE

**Part No: 15729**

80° CAMERA EXTREME 60K IR -40°C TO 50°C (-40°F TO 122°F) DUAL OUTPUT 60000 CYCLE

**Part No: 15730**

80° CAMERA EXTREME 90K LENS -40°C TO 50°C (-40°F TO 122°F) DUAL OUTPUT 90000 CYCLE

**Part No: 15731**

80° CAMERA EXTREME 90K IR -40°C TO 50°C (-40°F TO 122°F) DUAL OUTPUT 90000 CYCLE

**Part No: 15863**

120° CAMERA STANDARD 60K 5°C TO 50°C (41°F TO 122°F) DUAL OUTPUT 60000 CYCLE

**Part No: 15864**

120° CAMERA STANDARD 90K H/D 5°C TO 50°C (41°F TO 122°F) DUAL OUTPUT 90000 CYCLE

**Part No: 15865**

120° CAMERA EXTREME 60K -40°C TO 50°C (-40°F TO 122°F) DUAL OUTPUT 60000 CYCLE

**Part No: 15866**

120° CAMERA EXTREME 90K H/D -40°C TO 50°C (-40°F TO 122°F) DUAL OUTPUT 90000 CYCLE

MACHINE CONTAINMENT SYSTEM

The ControlMaster® Machine Containment system has been designed for underground Remote/Teleremote mining applications where multiple entries to a remote mining area need to be guarded from the remote machine exiting the area, as well as personnel entering the area. The master unit can receive signals from up to four (4) scanner control unit kits. Each Control Unit Kit consists of two (2) scanners spaced 800mm apart which gives double redundant operation. This prevents personnel from being able to go under or step over the scanner beams without triggering the Machine Containment system.



PRODUCT IMAGE
UNAVAILABLE

PRODUCT IMAGE
UNAVAILABLE

Part No: 10146
BYPASS PLUG FOR 10144 CM2000

Part No: 12174
SOFTWARE FOR MACHINE
CONTAINMENT SYSTEM

Part No: 13057
HEAVY DUTY CONTAINMENT
SYSTEM WORK AREA UPGRADE
KIT



Part No: 5657
LOOM 25M TO SUIT 1251
RESET UNIT

Part No: 9244
SCANNER TO SUIT BARRIER
SYSTEM WITH PLUG

Part No: 9673
KIT MACHINE CONTAINMENT
SYSTEM 12V 1 CONTROL



Part No: 10138
PLUG BYPASS FOR MACHINE
CONTAINMENT SYSTEM 3 PIN
DEUTSCH

Part No: 10144
LOOM FOR 9525 DUAL MACHINE
CONTAINMENT SYSTEM

Part No: 10860
MACHINE CONTAINMENT
SYSTEM SPLITTER UNIT

PRODUCT IMAGE
UNAVAILABLE



Part No: 11771
KIT MACHINE CONTAINMENT
SYSTEM ATX2200

Part No: 13053
WALL MOUNT FOR MACHINE
CONTAINMENT SYSTEM

Part No: 13054
HEAVY DUTY DUAL SCANNER
ASSEMBLY



Part No: 13055
HEAVY DUTY DUAL REFLECTOR
ASSEMBLY



Part No: 13056
KIT MACHINE CONTAINMENT
SYSTEM CONTROL UNIT HEAVY
DUTY



Part No: 15074
WARNING LIGHT FOR HEAVY
DUTY MACHINE CONTAINMENT
SYSTEM



Part No: 15183
AREA ACCESS CONTROL
(DIGITAL SYSTEMS)

PRODUCT IMAGE
UNAVAILABLE

Part No: 15185
AREA ACCESS CONTROL
(ANALOGUE SYSTEMS)



Part No: 4097
REFLECTOR POLARISED 100MM
X 100MM



Part No: 9265
MOUNT SCANNER FOR 9244



Part No: 9514
UNIT MACHINE CONTAINMENT
SYSTEM MASTER



Part No: 9525
CONTROL UNIT FOR MACHINE
CONTAINMENT SYSTEM



Part No: 9638
LOOM FOR 9525 MACHINE
CONTAINMENT SYSTEM
CONTROL UNIT



Part No: 9674
PLUG BYPASS FOR MACHINE
CONTAINMENT SYSTEM



Part No: 9675
SCANNER TO SUIT MACHINE
CONTAINMENT SYSTEMS W/
PLUG WITH 4 PIN DEUTSCH PLUG