

INTELLIGENT CAMERA SYSTEMS

Keep your operators alert and focused
on the task at hand.

Pedestrian Alert System

A simple safety video solution, with no additional hardware or equipment needed.

Ensure the safety of on-site personnel with this advanced driver assistance solution. Without the use of vests, tags, or other accessories, it can identify human-like forms in the camera's field of view using sophisticated artificial intelligence (AI) algorithms.

This allows machine operators with clear views of the front, side and rear of their vehicle and can assist in preventing incidents by providing audio and visual alerts.

The solution can also be configured to automatically trigger additional safety systems including speed limiters, extra warning lights/alerts or register within DVRs or fleet management systems.

With a wide detection range area, the system can differentiate between objects and pedestrians. The solution categorizes site personnel within a 65 feet radius in red, amber and green fields and audible alarm. This feature provides drivers with more time to respond appropriately which enables safer driving practices.

The system allows up to four (4) cameras to be connected to the monitor at any time and can be configured to display certain camera views depending on machine gear selections. The durable camera can withstand the toughest conditions, making it ideal for mobile machines operating in the harshest environments. The optimal performance of the camera is always ensured thanks to its AI functionality which can be calibrated simply by using Wi-Fi and the USB calibration tool.

The AusProTec™ Pedestrian Alert System is the most reliable way to safely manage machine-to-pedestrian interactions and prevent serious injuries. Available in 1, 2, 3 or 4 camera options for the front, rear and sides. With DVR expansion options are also available.



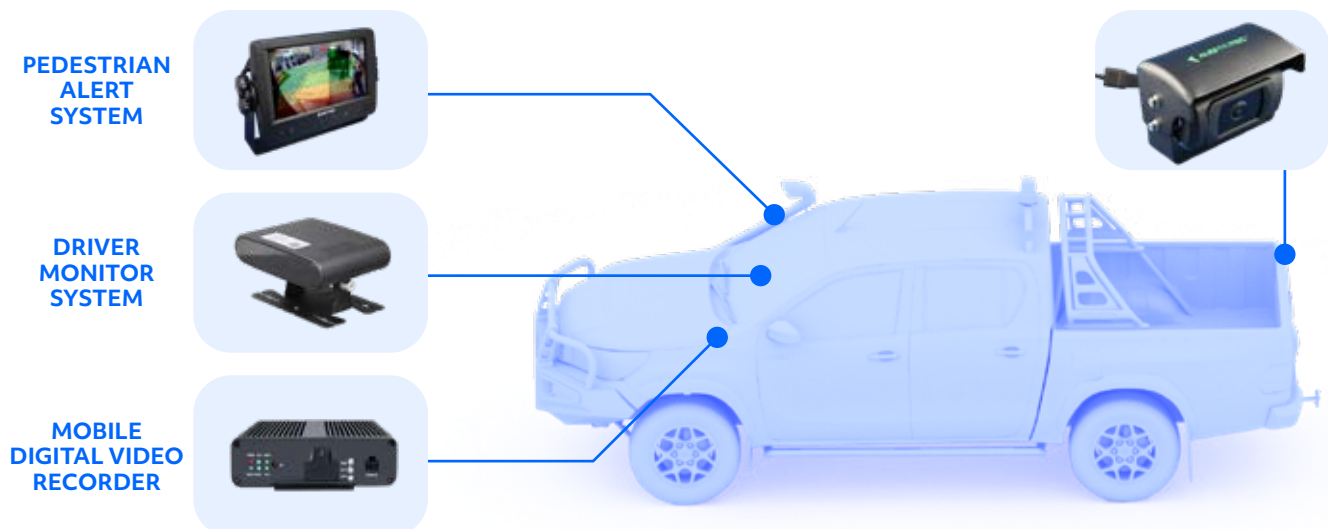
Specifications:

Supply Voltage	10-32V DC
Video Format	25 or 30fps
Video Output	AHD (1.0Vp-p, 750hm)
Resolution	1920 x 1080p
Viewing Angle	52°/140°
Audio Output	Warning sound signal output
Communication Interface	USB 2.0 (for software upgrade)
Cable Length	10ft
Working Temperature	-4 ~ +158°F
Storage Temperature	-22 ~ +176°F
Waterproof Rating	IP69K
Dimension	3.7 x 2.4 x 2.7(inch)
Weight	17oz
Housing Color	Black

Note: This product is not (and should not be seen as) a substitute for human control, care and vigilance. Users should not overly rely on or depend on the product but use the product as an additional aid while exercising the same level of care and skill in operating the vehicle or machine.

Features:

- ✓ Easy to install.
- ✓ Rear view detection distance of 1.5ft – 65ft
- ✓ Full HD 1080p resolution
- ✓ Configurable visual detection zones
- ✓ Audible alarm output (12V / 250mA) to trigger other devices including alarms, lights and recorders
- ✓ Available in 1, 2, 3, and 4 camera and DVR options



Driver Monitor System

Keep your operators alert and focused on the task at hand.

Many incidents involving mobile equipment are primarily caused by driver fatigue, distractions, and drowsy driving.

The AusProTec™ Driver Monitoring System has been specifically designed to alert operators on three levels – Fatigue, Distraction and Abnormal driving behaviour.

This small, dash-mounted camera, which is available in WiFi and 4G models, is simple to set up, capable of recording incidents internally 20 seconds before and after the event, and viewable through our user-friendly application.

Note: For 4G application a SIM card will need to be supplied

Features:

- ✓ Detect and alarm drivers for unsafe behaviours including fatigue, distraction, mobile phone usage, smoking and absent driving.
- ✓ Driver Identification - up to 400 drivers
- ✓ Built-in WI-Fi and GPS
- ✓ Audible and visual alarm
- ✓ Supports up to 128G Micro SD card recording up to 120 hours in total

Mobile Digital Video Recorder

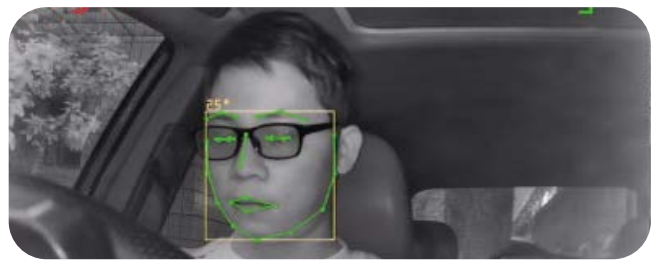
A 4-channel all-in-one solution, that applies a multi-core processor and powerful neural networks.

The Intelligent MDVR device can offer professional and reliable vehicle management solutions for light and heavy vehicles. It can sense and monitor all abnormal situations in real-time, such as people, vehicles, and road conditions throughout the driving process.

Offering clients real data on vehicle driving (ie speed, pedestrian detection) and driving behaviour (i.e. phone usage, yawning) to achieve more intelligent, more comprehensive, and more active vehicle safety management.

Features:

- ✓ Supports 3G/4G/ WIFI/ GPS tracking.
- ✓ Driver Monitoring and Assistance -Integrated with driving assistance and fatigue monitoring functions.
- ✓ SSL encryption and HTTPS secure transmission.
- ✓ HD video recording function. Support multiple modes to trigger recording.
- ✓ PC/mobile terminal remote real-time monitoring, historical track and video query, and dangerous events can be uploaded to the vehicle monitoring platforms to achieve efficient fleet management.
- ✓ HD touchscreen control, IR remote control, and flat human-device interaction interface.
- ✓ Integration for Radar, OBD, voice intercom, speed, tire pressure, fuel consumption, temperature, door switch, vehicle weight, vibrator and other sensors access is available.



Specifications:

Voltage	10-36V DC
Power Consumption	Max 4W
Video Output	1CH, AHD,1920 x 1080/25f or 1920 x 1080/30f
Video Compression	AVI, H.264
Camera Resolution	HD1920 x 1080/25f or 1920 x 1080/30f
Recording Format	MP4
Wifi Parameters	802.11b/g/n 150Mbps
Operating Temperature	-4 ~ +140°F
Dimensions	4.3 x 3.4 x 2.5inch
Weight	7oz
SD Card	Max. 128G Micro SD
Detection Modes	Driver Identification, Fatigue, Distraction, Cellular Phone Usage, Smoking



Specifications:

Video input	4CH 1080P
Video standard	PAL: 25FPS, NTSC: 30FPS
Compression	H264/H265
Rating	IP69K waterproof and dustproof
Video output	CVBS/VGA/AHD
Image quality	1080P 120FPS
Audio input	4CH
Audio compression	ADPCM
Video bit rate	128kbps ~ 4Mbps/channel
Storage consumption	56 ~ 1800MB/(channelxhour)
Storage	SD card x1, SSD x1
Power supply	less than 15W (without cameras)
Storage temp. & humidity	-4 ~ 158°F, RH 80% MAX



rct-global.com

solutions@rct-global.com

