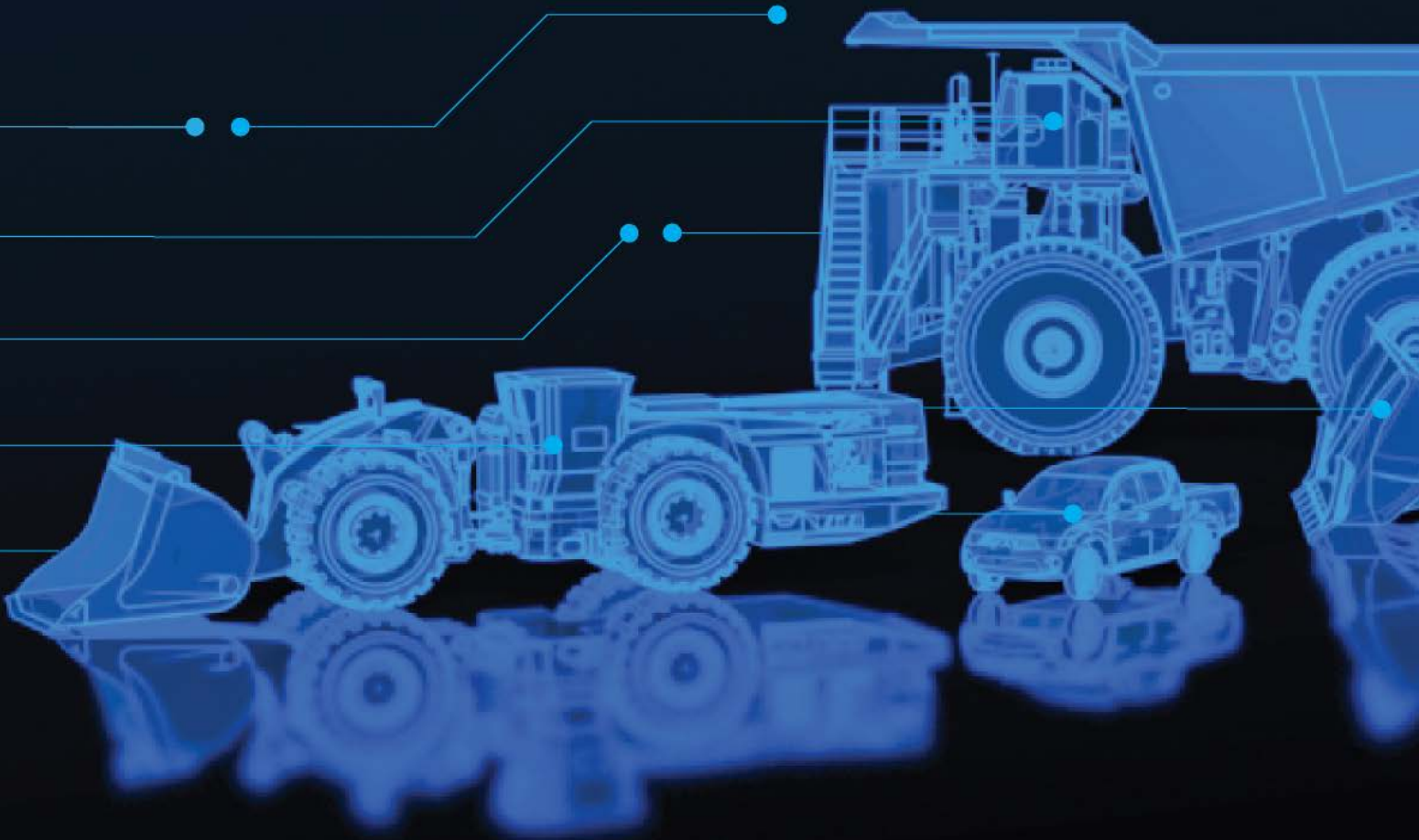




CAPABILITY STATEMENT



GROUP PROFILE

RCT is the world's trusted technology partner, offering an array of truly interoperable machine solutions to revolutionize the mining and industrial sectors to significantly reduce operational costs and improve bottom-line profit by streamlining operations.

Due to the diverse nature of the company, we are able to advance businesses by integrating our state-of-the-art Automation, Information, Data and Protection systems designed for any machine make or model.

RCT caters to each individual client's needs to best meet their desired outcomes. There is no one-size-fits-all solution, and the company is unique in that it has numerous solutions available across its product ranges to tailor an individual solution(s) to specific needs.

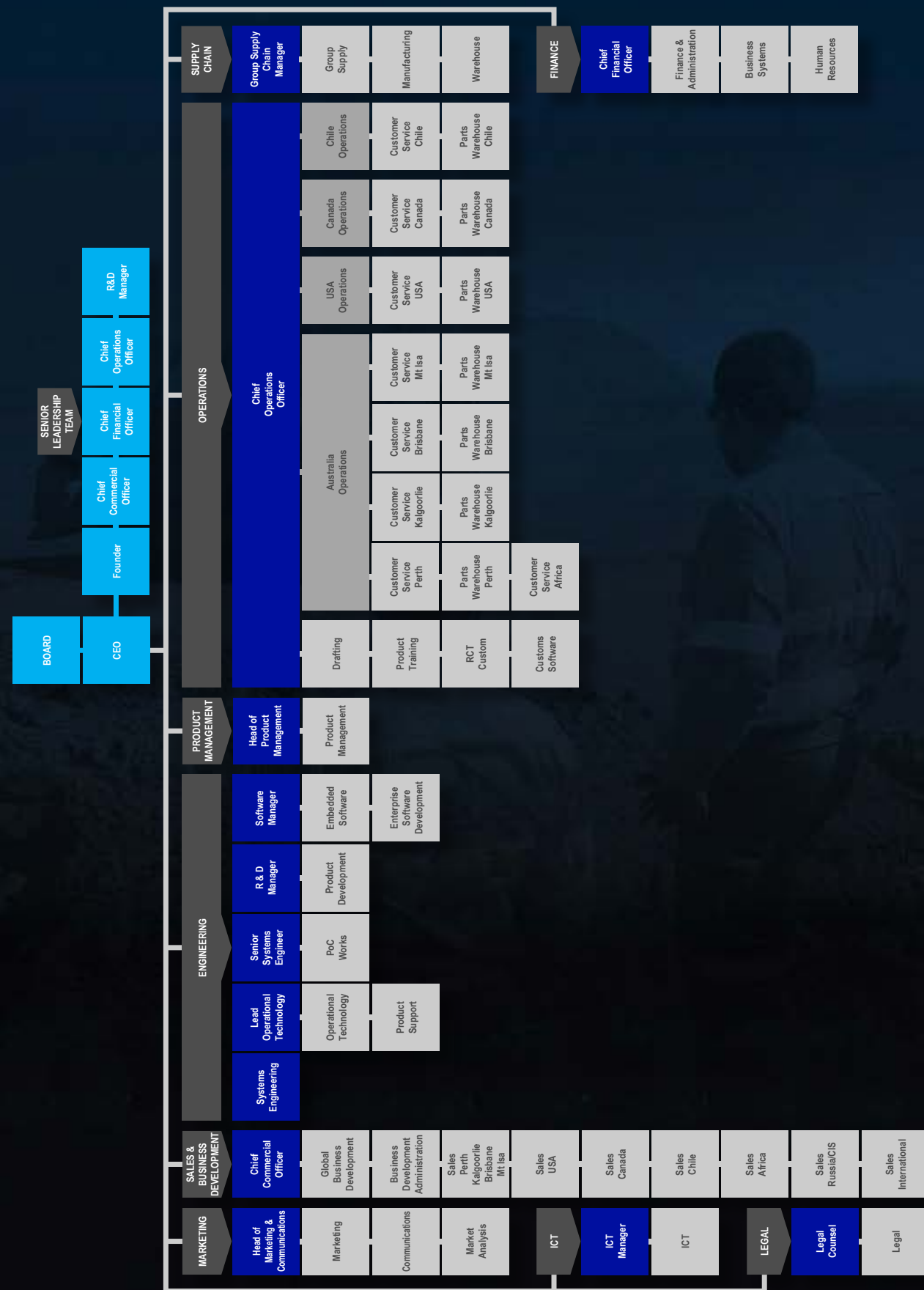
An industry leader since 1972 and with clients in over 72 countries worldwide, RCT is continually evolving – investing heavily in research and development to remain at the forefront of the technologies of the future.

RCT is a privately-owned group, with headquarters in Perth, Australia. The success of our business is underpinned by our world-class knowledge, insight, know-how and outstanding people; all bound by the integrity and values with which we do business.

We are focused on providing our clients with the advantage of smart technology and tangible benefits: increased profitability, safety and productivity. We research, innovate, design, manufacture, deliver and support technologies to clients around the world.



ORGANISATION



STAFF

RCT has a positive workplace culture and recognizes our staff is our main and most important asset. It's the talent, dedication and hard work of the entire team that makes the company a success. Our team has grown to more than 270 committed people working with clients across 6 continents.

Every role is integral to the business, therefore, the company invests in its employees and ensures it creates a space in which full potential can be met.

This development has allowed the company to provide opportunities and promotions from within the organisation resulting in a skilled and high-performing cohesive culture. With many staff members remaining with the company for 15+ years, the company's retention rate is very important and continues to be a strategic focus.

In addition, we recruit the best local and international talent to ensure we have the top qualified and customer service-focused people working for us to help our clients achieve their goals.



VISION & VALUES



Integrity

Operating anywhere in the world, doing what is right and doing what we say we will do.



Commitment

Thrive on going that 'extra mile', we observe, listen, problem solve and collaborate to provide unrivalled service.



Performance

Encourage personal and professional empowerment by working actively, intensively and collectively.



Ownership & accountability

A proactive and professional company, RCT accept responsibility for our actions and deliver on our commitments.



Innovative

Believe in continuous improvement. We respond to the market and collaborate to bring about innovations that have purpose.



Respect

Each other and our clients. We are sensitive to cultures and foster a growth mindset, bringing shared value to places we work.



KEY ACHIEVEMENTS

- ✔ One of the first companies in the world to remote a dozer in the late 1980s.
- ✔ In the mid-1990s, RCT introduced Teleremote technology into mining operations.
- ✔ Since its inception, RCT has installed more remote controls on more dozers, loaders and excavators across different models of mobile machines than any other company.
- ✔ Released in 2012, RCT is the only company in the world with a Haul Truck autonomous solution that can be adapted to any make or model.
- ✔ In 2016, the company retrofitted Alliance Resource Partners' 15-year-old Cat D8R with ControlMaster® when other companies advised them it was virtually impossible to install automation and remote control.
- ✔ In 2016, RCT was awarded Australian Mining's Innovative Mining Solution Winner.
- ✔ In 2017, RCT Founder and Executive Chairman, Bob Muirhead, was named Austmine's Champion of Innovation.
- ✔ In 2019, the company was named Automation Champions at Mining World in Russia.
- ✔ Conducted a Remote Operations Centre (ROC) project in 2019 with Northern Star Resources in which an East Kundana Joint Venture (EKJV) operator controlled an underground loader from the WA School of Mines facility which was 40 kilometres (24.8 miles) away from the mine.
- ✔ In 2020, ControlMaster® Automation technology achieved 8 million operating hours in active mines without a single machine hitting a wall or an accident involving mine personnel.



The industry-leading Automation & Control technologies are the most sought-after solution in the industry. Known for its versatility, the ControlMaster® range is scalable and can be applied to a single machine or an entire mixed fleet – depending on the readiness of the operation. The only truly interoperable platform on the market can integrate seamlessly with any site's existing and future technologies and mobile equipment. Used by some of the world's largest companies, ControlMaster® is revolutionizing industries by modernizing procedures to drive efficiencies and deliver a continuous operation – which is something that other OEMs can't offer.



Information is power and EarthTrack® provides exactly that. Delivering data and information that will empower businesses to make informed decisions. From light vehicle monitoring solutions that provide relevant vehicle and operator information, to payload management to achieve optimum payload every single time and to Machine Data Gateway (MDG) to unlock and gather raw data in a consolidated format to be uploaded to business analytics software for actionable insights.



Muirhead® solutions are RCT's founding brand. The range focuses on safeguarding the workforce and extending machine fleet life. Resulting in profitable operations, the product range reliably prevents machine system failures and unexpected breakdowns. Solutions include: idle timers, speed limiters, park brake interlocks, fatigue monitoring, incline controllers, engine protection, fuel lockouts, tray safety solutions and throttle limiters.



Enhance your machine assets with proven, robust electrical equipment. The entire AusProTec™ range of specialized parts are supported by RCT's technical team to advance job and equipment efficiency. Parts include: alarms, cables, cameras, connectors, fleet ID, gauges, lighting, rear detection, switches and tooling.



SmarTrack® Fleet Management systems are transforming the industrial sector. It plays a vital role in optimizing materials handling operations. The systems can be installed on any industrial mobile equipment and simplifies the fleet management process. It empowers management with information about machine and operator activity. Key features include: global reporting, checklists, multilingual interface, weight and speed monitoring, GPS zoning and operator access control.



RCT has you covered with its stock of 2,500+ parts to keep your operation running without disruptions. From our network of service branches around the world, all parts can be promptly shipped to anywhere in the world. Explore the entire range at rct-global.com/store

COMPREHENSIVE GLOBAL SERVICES

Global support

All solutions are backed by RCT's leading support model and ever-expanding service network; aimed at providing local support, using local people, who are readily available – anytime, anywhere. Support includes, but not limited to: myRCT (online portal), remote diagnostics, software support, scheduled and unscheduled site visits, hire equipment, critical spares supply and maintenance. In addition, RCT's highly competent and ever-expanding network of technology partners located around the world provide on-ground support to client operations with support from RCT.

Site audits & consultation

RCT can perform site audits such as risk assessments and safety analysis, to ensure the safest and most productive approach is taken. RCT provides consultancy services, including feasibility studies and strategies to improve technology and optimize operations. RCT prides itself on providing world-class after-sales support to ensure maximum utilization of our products and that our clients are on the best pathway to achieve their goals.

Research & innovation

Our Proof of Concepts Works (PoC Works) team utilises the technical insight of some of the best minds to create highly specialized technology. Reflecting RCT's commitment to performance, the team is constantly pushing the boundaries of what is possible to stay at the forefront of the technology curve.

Customised solutions

RCT Custom is a department specialized in the delivery of bespoke solutions to address vital operational improvements. The team has the expertise and resources to resolve any challenge; regardless of the size or scope of the project. If there is a requirement that needs fulfilling on site but no off-the-shelf solution available, RCT Custom is your answer.

Skills training

RCT has a long proven history of providing high-quality training to get the most out of RCT's solutions. The industry-recognized courses are tailored to suit operators, engineers and maintenance personnel – allowing sites to be more self-sufficient. Options: webinar, face-to-face and eLearning.

Manufacturing

RCT keeps production in-house with its own manufacturing facilities, using highly-talented people to build and deploy all our proprietary solutions.



TECHNOLOGY CAPABILITIES



Automation

Proven agnostic platform that can be applied to a single machine or an entire mixed fleet. RCT's automation is disrupting the industry by modernizing procedures to drive efficiencies and deliver a continuous mining operation.



Information

RCT can manage the collection, transfer, storage and analytics of data. RCT's agnostic offer can provide customers with the ability to standardise and collate information harvested from their mixed fleet. The data may be analysed and reported from within a cloud server or provided to the customer via a reporting system of their choice.



Interoperability

The only truly interoperable platform on the market can integrate seamlessly with any site's existing and future technologies and mobile equipment.



Scalability

RCT technology is designed to offer flexible and adaptive pathways to higher levels of automation and control that can be expanded upon over time as the mine evolves.



Adaptability

RCT delivers technology for the miners of today as well as the miners of tomorrow with an adaptive offering to suit specific mining applications. We will listen, understand and adopt technology with fit-for-purpose solutions to specific applications.



Digitization

RCT's Digitization strategy is focused on using onboard, machine-based processing which results in lower bandwidth requirements, meaning more effective machine control regardless of the site's communication network. Additionally, RCT's proprietary RCT Connect communication network can provide operations with a low cost, high quality and easy-to-use network.

OCCUPATIONAL HEALTH & SAFETY (OH&S)

Safety is embedded in RCT's values and we recognize the occupational health and safety (OH&S) of all employees and workplace visitors is of paramount importance.

Therefore, the company is fully committed to ensuring the OH&S requirements are met to create and maintain a safe working environment by managing the risks associated with their day-to-day work-related activities.

RCT recognizes that in order to ensure and maintain a safe workplace, we must provide information, instruction and training to employees as necessary to enable them to perform their work in such a manner that they are not exposed to hazards.

Our commitment to continuous improvement ensures all employees are kept up-to-date with legislation, including all codes and guidelines. RCT complies with the OH&S Act 1984 and OH&S Regulations 1996.



PROJECTS



West Gold Resources' Big Bell mine (Australia)

Solutions:

2x Automation Centres and ControlMaster® Automation on 3x Cat R2900, 2x Sandvik 517, 1x Sandvik 621

Outcome:

"We have bogged between 10,000 – 12,000 tons of dirt more this month than what we had forecast. Now we have set up 14 locations at Big Bell that the autonomous loaders can access at any one time. If one location is firing or if there is another issue, then the operators can direct the machine back to the main decline, trams to the next location and away you go."



Evolution Mining's Red Lake mine (Canada)

Solutions:

3x Automation Centre and ControlMaster® Automation on mixed underground Cat fleet

Outcome:

"We are very pleased to be partnering with RCT to introduce modern technologies to Red Lake as part of our transformation process. RCT equipment will enable higher productivity and efficiencies from our underground scoop fleet, while improving safety for our people."



Polyus' Olimpiada mine (Russia)

Solutions:

2x Automation Centres and ControlMaster® Automation on 5x Cat 777F trucks, 1x Komatsu 1 PC-3000-6 hydraulic shovel, 1x Komatsu D-275A-5 dozer, 1x Atlas Copco DML drilling rig

Outcome:

"The project highlighted RCT's capabilities: installing Automation on Caterpillar, Komatsu and Atlas Copco machines and have them work together to achieve a common goal of increasing productivity."



Silver Lake Resources' Mount Monger mine (Australia)

Solutions:

EarthTrack® Payload system on 5x Cat 777F trucks, 1x Hitachi 1200-6 excavator, 1x Hitachi 1900-6 excavator

Outcome:

"This will enhance the operator's ability to load dirt in an effective manner that ensures optimal loading conditions with every bucket. Ineffective loading can lead to strut damage and wear and tear to machines that can result in costly maintenance downtime. This tool will enable personnel to make better decisions to ensure smooth and consistent operations."



Barmenco and AUMS' project in Burkina Faso

Solutions:

Muirhead® Speed Limiter and Engine Overspeed systems on Atlas Copco MT6020 trucks

Outcome:

"This system is used to monitor speeds both on the surface and underground to ensure safe works on declines within the mines, to ensure safety in a restricted environment, reduce damage on the engines and overall reduce damage to the machines while underground."



Forklift Hire Services Ltd (New Zealand)

Solutions:

SmarTrack® Global system fitted to 20 pieces of equipment including forklifts, scissor lifts, knuckle booms and container handlers

Outcome:

"The operator login function and pre-start checklists for OSH compliance purposes and being able to set alerts for impacts, service reminders and expiring forklift licences is crucial to remain in line with New Zealand's safety laws. We know the product can clearly identify operator habits and incidents which enables managers to implement policies to reduce wear and tear on the machine fleet."

TESTIMONIALS

“Achieved a record of 6,300 buckets in one month. That is equivalent to more than 60,000 tonnes of ore.”

– **Eldorado Gold**

“A 32% improvement in cycle times on long tram routes.”

– **IGO**

“In the first six months, an additional 30,000 tonnes has been bogged during re-entry time.”

– **Barrick Gold**

“We are experiencing 25% – 50% increase in machine utilization.”

– **Perilya**

“We are impressed by the utilization reporting and the ability to locate a truck anywhere on site from a smartphone.”

– **Dairyworks**

“Productivity and safety can go hand-in-hand. We have a precious treasure waiting to be extracted from the muddy water, and we are now on the right path thanks to RCT Automation.”

– **Codelco**

“The system allows us to operate in hazardous conditions safely from the surface. It increases productivity by permitting us to operate during shift change and smoke clearing.”

– **Matsa**

“The fleet management system has provided our managers with key data in real-time that has enabled us to make informed decisions to benefit our operations.”

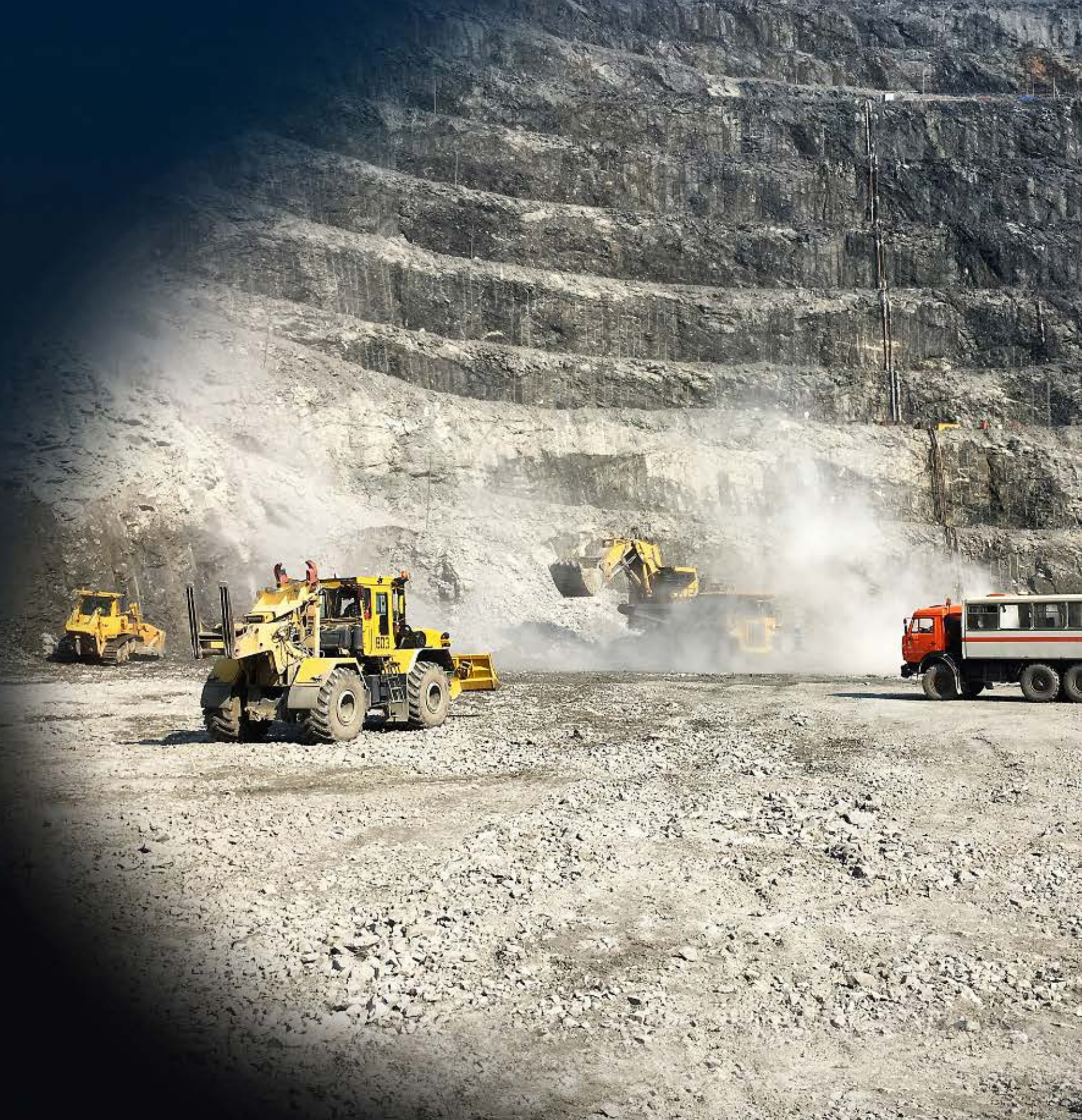
– **Oman Air SATS Cargo**

“Automation is an important innovation component of our business as it allows productivity to remain consistent across shift change and firing. The adoption of emerging technology such as this reinforces our commitment towards the implementation of our 3-year technology roadmap.”

– **Redpath**

“RCT’s skills training has empowered staff, making it possible to avoid extended downtime and save thousands of dollars in the costs associated with outsourcing maintenance.”

– **Ok Tedi Mine**



PARTNERS

Service Providers

Vostochnaya Technica LLC (Russia)

TecWise Sistemas de Automação (Brazil)

Borusan Makina (Kazakhstan)

HAEIN Corporation (South Korea)

MSM Group LLC (Mongolia)

Romac Electrical Services (Australia)

SA Auto Electrics (Australia)

TAS Auto Air Pty Ltd (Australia)

Western Suburbs Auto Electrics (Australia)

Distributors

TecWise Sistemas de Automação (Brazil)

Borusan Makina (Kazakhstan)

HAEIN Corporation (South Korea)

MSM Group LLC (Mongolia)

Western Suburbs Auto Electrics (Australia)

Trysome (South Africa)

Brake Supply Heavy Equipment (USA)

Reliable Industries (USA)

T & H Parts, Inc. (USA)

KPI Industrial Controls Inc. (Canada)

Integra Soluciones (Mexico)

Le Price International Corporation (Philippines)

PT PAZ ACE (Indonesia)

SR-O Technology (Finland)

RCT LOCATIONS

RCT Perth (Head Office)

Unit 1-6/511 Abernethy Road, Kewdale WA 6105, Australia

RCT Kalgoorlie

24 Percy Road, Kalgoorlie WA 6430, Australia

RCT Brisbane

Unit 1/27 Flinders Parade, North Lakes QLD 4509, Australia

RCT Mt Isa

72 Duchess Road, Mount Isa QLD 4825, Australia

RCT USA

7174 South 400 West, Suite 1-2 Midvale UT 84047, USA

RCT Canada

3307 Hwy, 144, Chelmsford ON P0M 1L0, Canada

RCT Chile

Reyes Lavalle 3170, Office 28, Las Condes, Santiago 7550142, Chile

RCT South Africa

Johannesburg, South Africa

Discover more: rct-global.com

sales@rct-global.com

AUSTRALIA: +61 8 9353 6577

AFRICA: +27 83 292 4246

CANADA: +1 705 590 4001

SOUTH AMERICA: +56 3 5229 9409

USA: +1 801 938 9214

