



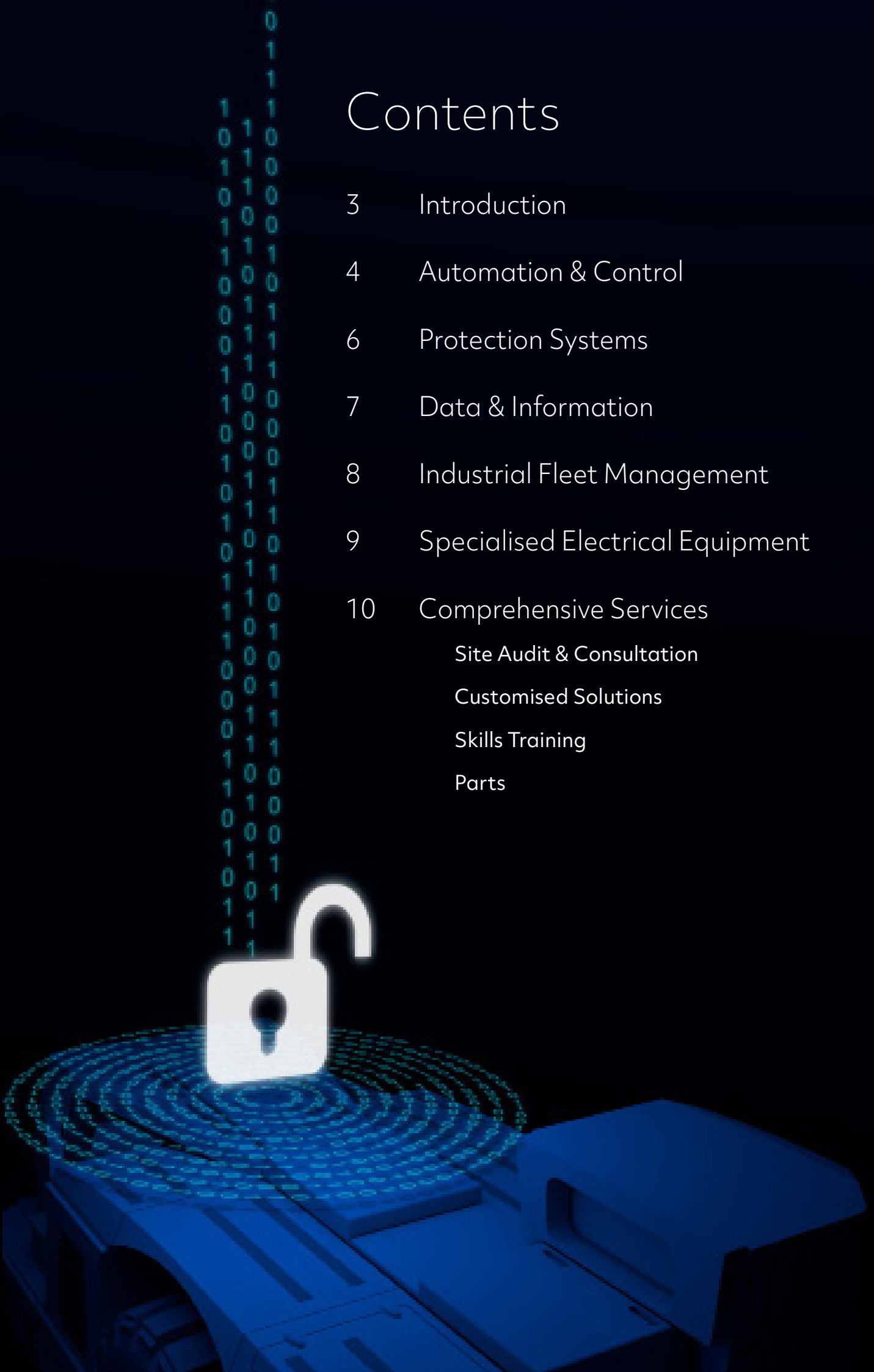
RCT

The Advantage of Smart Technology

The world's trusted technology partner for
the mining and industrial sectors.

Contents

- 3 Introduction
- 4 Automation & Control
- 6 Protection Systems
- 7 Data & Information
- 8 Industrial Fleet Management
- 9 Specialised Electrical Equipment
- 10 Comprehensive Services
 - Site Audit & Consultation
 - Customised Solutions
 - Skills Training
 - Parts



Intelligent solutions. Designed for a better mining future.

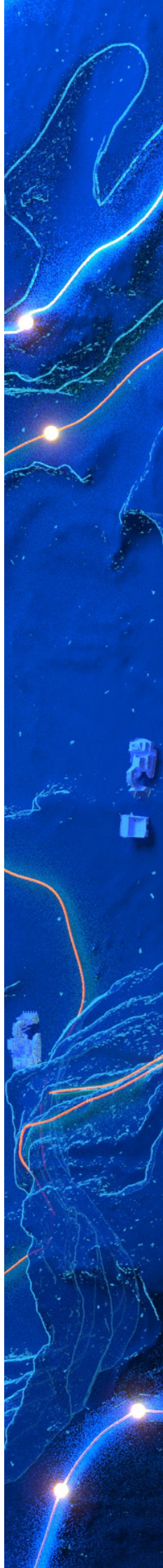
RCT is perfectly positioned as a world-leading machine technology specialist.

An industry leader for over 50 years, with clients in at least 72 countries worldwide, RCT is continually evolving. Investing heavily in research and development to remain at the forefront of the mining and industrial technologies of the future.

We add value regardless of the machine make or model. Delivering industry proven, well-supported interoperable solutions. Transforming the performance of surface and underground mining and industrial equipment globally.

RCT strive to make operations safer, smarter, and more efficient, resulting in more profitable businesses that are easier to maintain and manage.

An original equipment manufacturer (OEM) of five brands:



Automation & Control

Setting the global standard for remote equipment operation. Used by many of the major miners. ControlMaster® Automation & Control solutions modernising mining to drive production efficiencies to improve more continuous operation – outcomes customers do not get from machine suppliers. Known for its versatility, the ControlMaster® range is scalable it can be applied to a single machine or an entire mixed fleet – depending on the readiness of the mining operation.

Full Automation

The premium solution on the market where the operator organises and monitors a fleet of machines to perform all its defined tasks without their interaction.



Semi Automation

Machine(s) perform certain tasks without operator interaction for example tramming, loading, and dumping.



Teleremote (video)

Relocates the operator to a protected location where they can control the machine via remote with the assistance of cameras and sensors.



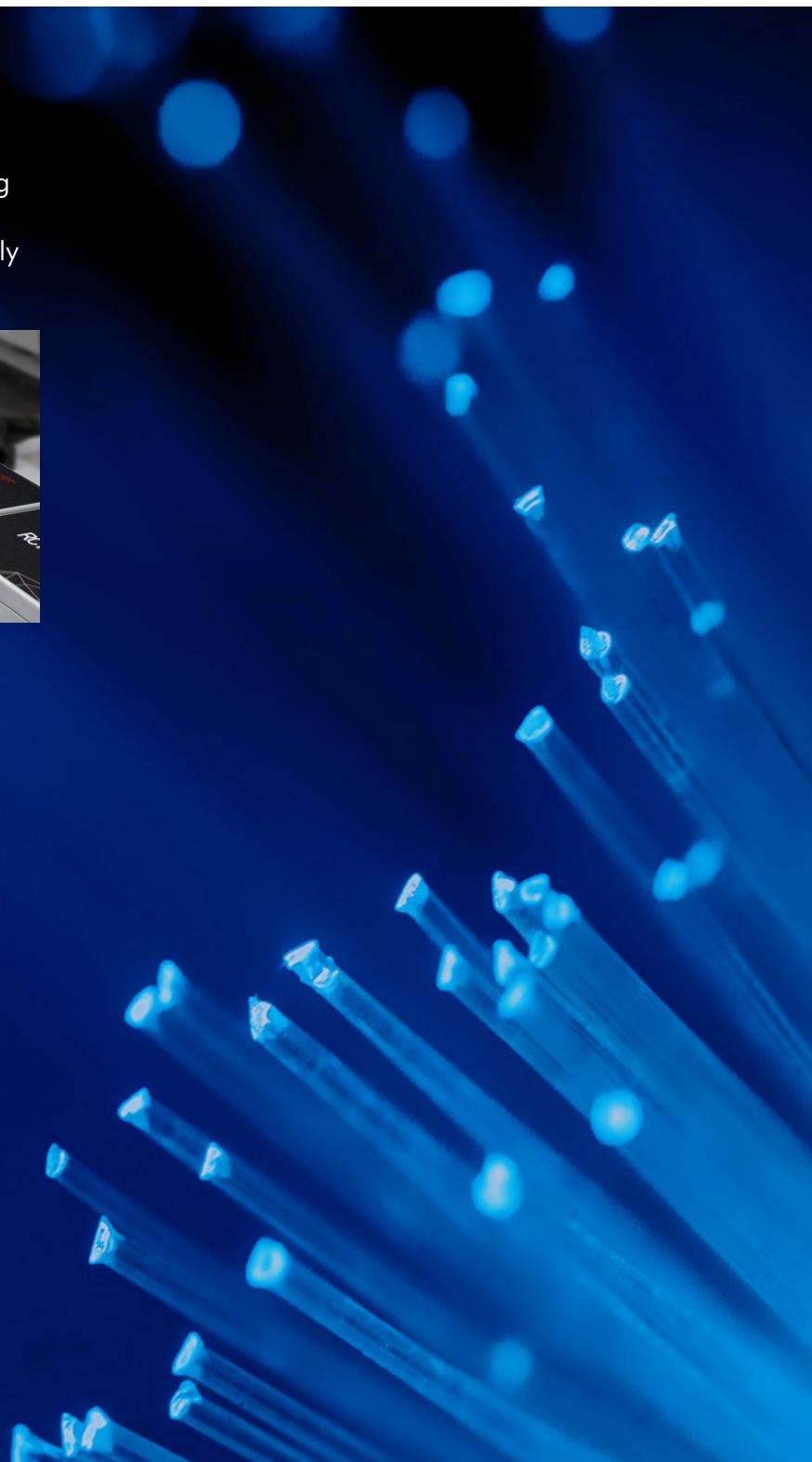
Line-of-sight (remote)

Entry-level option allowing operators to remotely control machines from a safe distance.



RCT Connect

Control and automation communication solutions to suit all mine site's needs ranging from analogue control to a hybrid of both analogue and digital, right through to a fully integrated digitised solution.



Protection Systems

Muirhead[®] solutions are RCT's founding brand focused on safeguarding the workforce while enhancing machine fleet performance. Lifting profitable operations, the product range reliably detects machine system faults, alerts operators, prevents unexpected breakdowns.

Muirhead[®] solutions are suitable for all surface and underground machine applications.

Machine Interface Control

The smartest vehicle control interface in the world. Able to deliver Level 9 CAS in a standardised, safe, and intelligent control for all OEM mechatronic control systems.



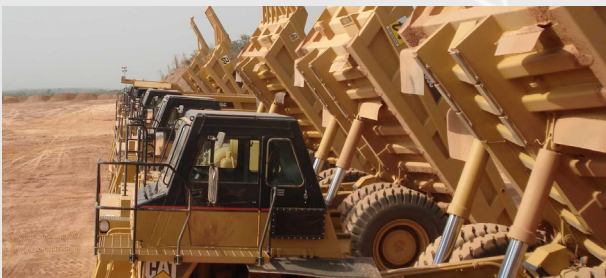
Fuel Cut-Off

This simple-to-install device prevents machine operators from departing the refuelling bay with the fuel nozzle still attached and causing damage to the vehicle and the bay.



Idle Timers

Simple and cost-effective devices that prevent workers prematurely shutting down equipment after use and causing turbo damage and costly maintenance.



Park Brake Warning

Prompts the operator to apply the vehicles handbrake by sounding an alarm if the machine door is opened prior to the handbrake being applied.



Smart Service Monitor

Designed to monitor the work hours of equipment to alert the user if the equipment requires or is overdue for a service.



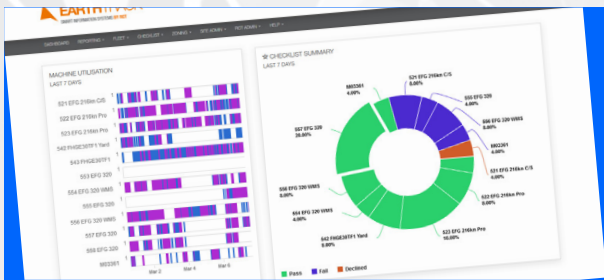
Data & Information

We help our customers make better decisions with EarthTrack® Data and Information solutions. By delivering strategic data, business managers will be empowered to make faster and more informed decisions about the most effective use and service of their fleet machines.

RCT has the expertise and experience to identify, capture then clean and delivery the most relevant data that is available on our customers machine fleet. We securely aggregate the data for easy access and reporting online or inhouse.

Digital Checklist

Better address the complexities of operational risk management and deliver the machine and operator data from multiple sites; all under one platform.



Payload Management

Maximise the productivity of your earthmoving fleet with production monitoring systems that assist operators to achieve the optimum payload single every time.



Vehicle Monitoring

Designed to fit all vehicle types and sizes. The solution provides relevant vehicle and operator data, resulting in better decision-making for mining companies to drive efficiencies.



Machine Data Gateway

Unlocks, gathers and collates machine data in a consolidated format to be uploaded to your business analytics software for actionable insights.



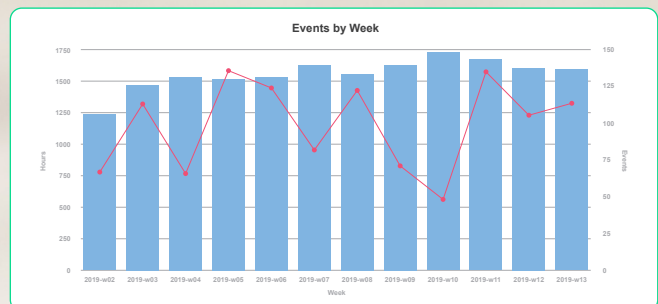
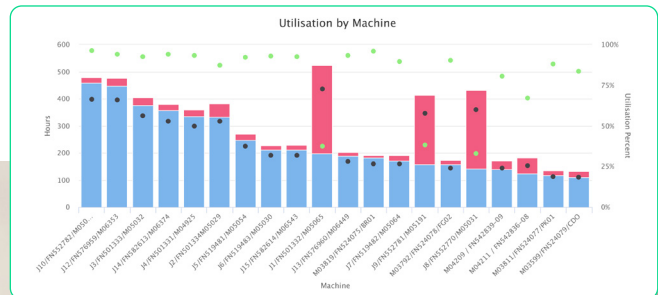
Industrial Fleet Management

SmarTrack® Fleet Management systems are transforming the industrial sector. It plays a vital role in optimising materials handling operations.

The systems can be installed on any industrial mobile equipment and simplifies the fleet management process. Delivers management with information about machine and operator activity from multiple sites – all under one platform, anytime, anywhere.

- ✓ Operator Access (Rfid Or Hid Display)
- ✓ Fleet Controller
- ✓ Global Reporting
- ✓ Multilingual Interface
- ✓ Out of Service
- ✓ Weight and Speed Monitoring*
- ✓ GPS Zoning

* Weight and speed monitoring may require additional hardware.

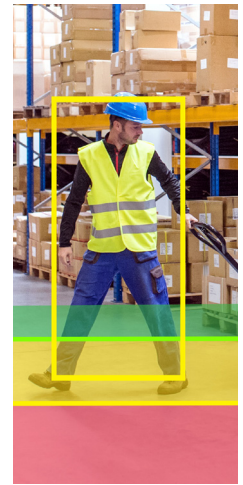


Specialised Electrical Equipment

RCT has you covered with its stock of 2,500+ specialised products to keep your operation running without disruptions. The entire AusProTec™ range are supported by RCT's technical team to further enhance job and equipment efficiency. From our network of service branches, all parts can be promptly shipped to anywhere in the world.

AusProTec™ specialised products are supported by RCT's technical team to further enhance job efficiency. Specialised electrical parts and solutions:

- ✓ Alarms
- ✓ Cables
- ✓ Cameras
- ✓ Connectors
- ✓ Fleet Identification
- ✓ Gauges
- ✓ Instrumentation
- ✓ Lamps
- ✓ Lighting
- ✓ Rear detection
- ✓ Switches
- ✓ Tooling



ToughEye 1700 Camera

The industry-leading, self-cleaning range of cameras are suitable for any mining and industrial application where a clear view is critical to the success of the operation.

Field-proven, rugged, single-piece design that delivers optimal, full HD image quality via analogue and IP video outputs. With an uninterrupted view during self-cleaning, the cameras provide a zero-maintenance* operation.

RCT can customise installations for almost any application.



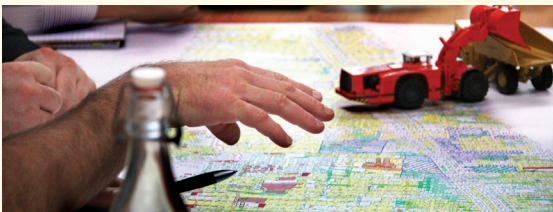


Comprehensive Services

Global Support - All solutions are backed by RCT's leading support model and ever-expanding service network; aimed at providing local support, using local people.

Site Audit & Consultation

RCT can perform site audits to ensure the safest and most productive approach is taken. RCT provides consultancy services, including feasibility studies and strategies to improve technology and optimize operations.



Customised Solutions

RCT Custom is a department specialised in the delivery of bespoke solutions to address vital operational improvements. The team has the expertise and resources to resolve challenges, regardless of the size or scope of the project.



Skills Training

Industry-recognised courses are tailored to suit operators and maintenance personnel, allowing sites to be more self-sufficient. Supported by practical demonstrations and hands-on experience, by our trainers and technicians.



Parts

Keep your operation running without disruptions. RCT, has you covered with its stock of 2,500+ specialised parts that can be shipped anywhere in the world.





Website : rct-global.com

Email: solutions@rct-global.com

RCT offers thousands of smart technology solutions for all our customers around the world. Please contact us to discover how we can help your mine.