

SMARTRACK® GLOBAL COMPONENTS GUIDE

FLEET MANAGEMENT MADE EASY
ANY TIME, ANYWHERE



KITS	4
SUBSCRIPTIONS	6
DIAGRAM	7
CONTROLLERS	8
DISPLAYS	10
ACCESSORIES	12
RAM MOUNTS	13
HARNESSES	14

KITS



LTE / RFID CARD READER KITS

BASE KIT - Consists of

** not included in VDI Loom kit

1	11505	Controller Fleet SmarTrack® Global LTE	1	8460	Ram Double Socket Arm 3"
1	15913	Display SmarTrack® Global RFID	1	8492	Ram Base 2 1/2" Diameter Base
1	10284	Dual Antenna GSM and GPS	1	2600	Switch Head Key Stay Put L/H**
2	15919	RFID Operator Card	1	9476	Body With 1xN/O Contact**
1	13855	Sensor Impact SmarTrack®	1	10977	Label Bypass SmarTrack®**

3M DISPLAY CABLE

WITH STANDARD LOOM

15887

1	-	Base Kit
1	11265	Loom SmarTrack® Global
1	15266	Cable SmarTrack® Display 3m

WITH SHORT LOOM

15888

1	-	Base Kit
1	11266	Loom Short SmarTrack® Global
1	15266	Cable SmarTrack® Display 3m

WITH VDI LOOM

16027

1	-	Base Kit
1	15799	Loom VDI-4458 SmarTrack® Global
1	15266	Cable SmarTrack® Display 3m

5M DISPLAY CABLE

WITH STANDARD LOOM

15889

1	-	Base Kit
1	11265	Loom SmarTrack® Global
1	15267	Cable SmarTrack® Display 5m

WITH SHORT LOOM

15890

1	-	Base Kit
1	11266	Loom Short SmarTrack® Global
1	15267	Cable SmarTrack® Display 5m

WITH VDI LOOM

16028

1	-	Base Kit
1	15799	Loom VDI-4458 SmarTrack® Global
1	15267	Cable SmarTrack® Display 5m

LTE / HID CARD READER KITS

BASE KIT - Consists of

** not included in VDI Loom kit

1	11505	Controller Fleet SmarTrack® Global LTE	1	8492	Ram Base 2 1/2" Diameter Base
1	15901	Display SmarTrack® Global HID	1	2600	Switch Head Key Stay Put L/H**
1	10284	Dual Antenna GSM and GPS	1	9476	Body With 1xN/O Contact**
1	13855	Sensor Impact SmarTrack®	1	10977	Label Bypass SmarTrack®**
1	8460	Ram Double Socket Arm 3"			

3M DISPLAY CABLE

WITH STANDARD LOOM

11517

1	-	Base Kit
1	11265	Loom SmarTrack® Global
1	15266	Cable SmarTrack® Display 3m

WITH SHORT LOOM

15351

1	-	Base Kit
1	11266	Loom Short SmarTrack® Global
1	15266	Cable SmarTrack® Display 3m

WITH VDI LOOM

16029

1	-	Base Kit
1	15799	Loom VDI-4458 SmarTrack® Global
1	15266	Cable SmarTrack® Display 3m

5M DISPLAY CABLE

WITH STANDARD LOOM

15615

1	-	Base Kit
1	11265	Loom SmarTrack® Global
1	15267	Cable SmarTrack® Display 5m

WITH SHORT LOOM

15616

1	-	Base Kit
1	11266	Loom Short SmarTrack® Global
1	15267	Cable SmarTrack® Display 5m

WITH VDI LOOM

16030

1	-	Base Kit
1	15799	Loom VDI-4458 SmarTrack® Global
1	15267	Cable SmarTrack® Display 5m



WiFi / RFID CARD READER KITS

BASE KIT - Consists of

** not included in VDI Loom kit

1	15847	Controller Fleet SmarTrack® Global WiFi	1	8460	Ram Double Socket Arm 3"
1	15913	Display SmarTrack® Global RFID	1	8492	Ram Base 2 1/2" Diameter Base
1	15905	Antenna Dual Band WiFi and GPS	1	2600	Switch Head Key Stay Put L/H**
2	15919	RFID Operator Card	1	9476	Body With 1xN/O Contact**
1	13855	Sensor Impact SmarTrack®	1	10977	Label Bypass SmarTrack®**
1	4723	Antenna Mount			

3M DISPLAY CABLE

WITH STANDARD LOOM

15891

1	-	Base Kit
1	11265	Loom SmarTrack® Global
1	15266	Cable SmarTrack® Display 3m

WITH SHORT LOOM

15892

1	-	Base Kit
1	11266	Loom Short SmarTrack® Global
1	15266	Cable SmarTrack® Display 3m

WITH VDI LOOM

16033

1	-	Base Kit
1	15799	Loom VDI-4458 SmarTrack® Global
1	15266	Cable SmarTrack® Display 3m

5M DISPLAY CABLE

WITH STANDARD LOOM

15893

1	-	Base Kit
1	11265	Loom SmarTrack® Global
1	15267	Cable SmarTrack® Display 5m

WITH SHORT LOOM

15894

1	-	Base Kit
1	11266	Loom Short SmarTrack® Global
1	15267	Cable SmarTrack® Display 5m

WITH VDI LOOM

16034

1	-	Base Kit
1	15799	Loom VDI-4458 SmarTrack® Global
1	15267	Cable SmarTrack® Display 5m

WiFi / HID CARD READER KITS

BASE KIT - Consists of

** not included in VDI Loom kit

1	15847	Controller Fleet SmarTrack® Global WiFi	1	8492	Ram Base 2 1/2" Diameter Base
1	15901	Display SmarTrack® Global HID	1	2600	Switch Head Key Stay Put L/H**
1	15905	Antenna Dual Band WiFi and GPS	1	9476	Body With 1xN/O Contact**
1	13855	Sensor Impact SmarTrack®	1	10977	Label Bypass SmarTrack®**
1	8460	Ram Double Socket Arm 3"	1	4723	Antenna Mount

3M DISPLAY CABLE

WITH STANDARD LOOM

15895

1	-	Base Kit
1	11265	Loom SmarTrack® Global
1	15266	Cable SmarTrack® Display 3m

WITH SHORT LOOM

15896

1	-	Base Kit
1	11266	Loom Short SmarTrack® Global
1	15266	Cable SmarTrack® Display 3m

WITH VDI LOOM

16031

1	-	Base Kit
1	15799	Loom VDI-4458 SmarTrack® Global
1	15266	Cable SmarTrack® Display 3m

5M DISPLAY CABLE

WITH STANDARD LOOM

15897

1	-	Base Kit
1	11265	Loom SmarTrack® Global
1	15267	Cable SmarTrack® Display 5m

WITH SHORT LOOM

15898

1	-	Base Kit
1	11266	Loom Short SmarTrack® Global
1	15267	Cable SmarTrack® Display 5m

WITH VDI LOOM

16032

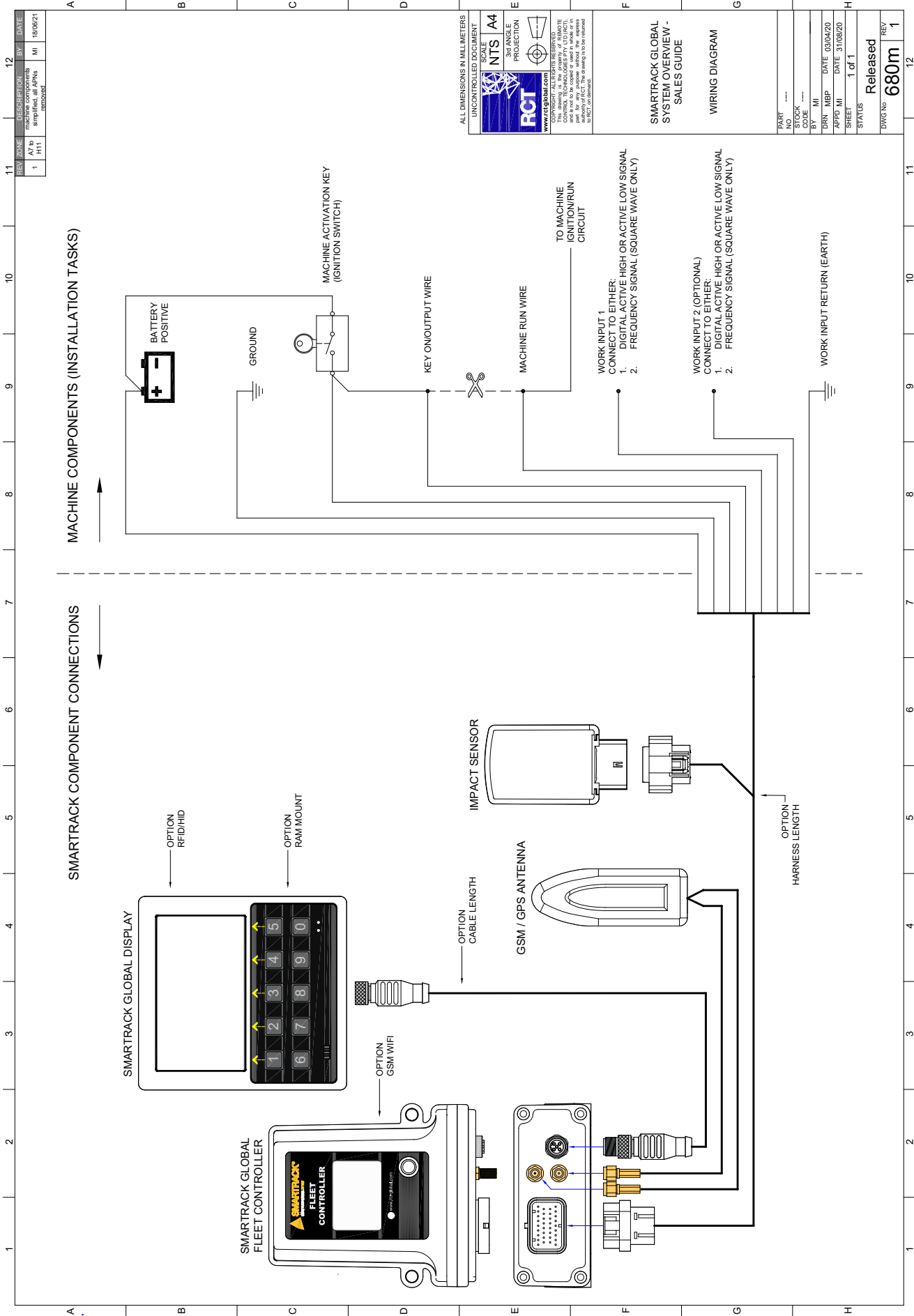
1	-	Base Kit
1	15799	Loom VDI-4458 SmarTrack® Global
1	15267	Cable SmarTrack® Display 5m

Please visit the coverage map on the RCT web site to confirm the coverage in your region;

rct-global.com/coverage

SUBSCRIPTIONS

Part No.	Description
12131	SUPPORT/ACCESS 1YR SMARTRACK (WEBSITE ACCESS AND SUPPORT FOR 1 YEAR)
12422	SUPPORT/ACCESS 2YR SMARTRACK (WEBSITE ACCESS AND SUPPORT FOR 2 YEARS)
12423	SUPPORT/ACCESS 3YR SMARTRACK (WEBSITE ACCESS AND SUPPORT FOR 3 YEARS)
12424	SUPPORT/ACCESS 4YR SMARTRACK (WEBSITE ACCESS AND SUPPORT FOR 4 YEARS)
12130	SUPPORT/ACCESS 5YR SMARTRACK (WEBSITE ACCESS AND SUPPORT FOR 5 YEARS)
12341	SUPPORT/ACCESS 6YR SMARTRACK (WEBSITE ACCESS AND SUPPORT FOR 6 YEARS)
12342	SUPPORT/ACCESS 7YR SMARTRACK (WEBSITE ACCESS AND SUPPORT FOR 7 YEARS)



ALL DIMENSIONS IN MILLIMETERS
UNCONTROLLED DOCUMENT

SCALE: NTS A4
3rd ANGLE PROJECTION

RCT
www.rctglobal.com

This drawing is the property of RCT and is not to be copied or used in whole or in part without the written consent of RCT. The drawing is to be returned to RCT on demand.

SMARTTRACK GLOBAL SYSTEM OVERVIEW - SALES GUIDE

WIRING DIAGRAM

PARF	----
TO WORK CODE	----
BY	MI
DATE	03/04/20
DRN	MBP
DATE	31/09/20
APPD	MI
SHEET	1 of 1
STATUS	Released
DWG No	680m
REV	1

DIAGRAM



Part No 11505

SMARTRACK® GLOBAL FLEET CONTROLLER

MECHANICAL AND ENVIRONMENTAL

Dimensions:	Height: 138.5mm Width: 116mm Depth: 48.5mm
Weight:	300 g
Ambient Temperature:	-25 to +85° C
Humidity:	0 to 95% non-condensing relative humidity
Altitude:	-1000 to 3000 metres MASL
Shock Impact:	7 g, 1 ms non-repetitive
Vibration Rating:	0.5 g to 500 Hz
IP Rating:	IP65

POWER CONDITIONING

Operational Supply:	12 to 48 V
Maximum Input Voltage:	60 V
Maximum Current:	6 A
Quiescent Current:	5 mA

INPUTS

Input Channels:	8
Input Impedance:	100 K Ohms
DC Measurement:	24 V, 4 V switching threshold, 33 V max. (100 V protection Input 8)
AC Measurement:	0 to 10 V, 33 V max. (60 V protection on Input 7)
Frequency Measurement:	10 to 5000 Hz
Pull up and Pull down:	12 V, 5 mA max

OUTPUTS

Number of Output Channels:	8
Digital Output:	12 V, 400 mA max
Combined Output Current:	1 A max

COMMUNICATIONS

Type:	LTE
-------	-----

ANTENNA

Impedance:	50 Ohms
Cellular:	RP-SMA Female
GPS:	SMA Female, 3.3 V LNA



Part No 15847

SMARTRACK® GLOBAL FLEET CONTROLLER WIFI

REGION

Europe and China

MECHANICAL AND ENVIRONMENTAL

Dimensions:	Height: 138.5mm Width: 116mm Depth: 48.5mm
Weight:	300 g
Ambient Temperature:	-25 to +85° C
Humidity:	0 to 95% non-condensing relative humidity
Altitude:	-1000 to 3000 metres MASL
Shock Impact:	7 g, 1 ms non-repetitive
Vibration Rating:	0.5 g to 500 Hz
IP Rating:	IP65

POWER CONDITIONING

Operational Supply:	12 to 48 V
Maximum Input Voltage:	60 V
Maximum Current:	6 A
Quiescent Current:	5 mA

INPUTS

Input Channels:	8
Input Impedance:	100 K Ohms
DC Measurement:	24 V, 4 V switching threshold, 33 V max. (100 V protection Input 8)
AC Measurement:	0 to 10 V, 33 V max. (60 V protection on Input 7)
Frequency Measurement:	10 to 5000 Hz
Pull up and Pull down:	12 V, 5 mA max

OUTPUTS

Number of Output Channels:	8
Digital Output:	12 V, 400 mA max
Combined Output Current:	1 A max

COMMUNICATIONS

Type:	WiFi Modem
-------	------------

ANTENNA

Impedance:	50 Ohms
Cellular:	RP-SMA Female
GPS:	SMA Female, 3.3 V LNA



Part No **15913**

SMARTRACK® GLOBAL DISPLAY WITH RFID READER

MECHANICAL AND ENVIRONMENTAL

Dimensions: Height: 131mm | Width: 122mm | Depth: 39.5mm

Weight: 450 g

Ambient Temperature: -20 to +65° C

IP Rating: IP65

Enclosure Materials: Polycarbonate: +PET Blend, Polycarbonate: Nylon

Enclosure Colour: Grey

Mounting: Mount type: RAM Mount Ball
Ball Size: B Size 1"
Ball Material: Rubber

POWER CONDITIONING

Operational Supply: 9 V

Maximum Power: 5 W

KEYPAD

Number of keys: 10x tactile dome

CARD READER

Frequency: 13.56 MHz

Compatibility: SmarTrack® Programmed Operator Card

AUDIO

Type: Single tone piezo electric

Frequency: Minimum: 2300 Hz
Typical: 2800 Hz
Maximum: 3300 Hz

Typical Sound Pressure Level (SPL) Rating: 85 dB @ 1 m

DISPLAY

Type: Colour LCD TFT 4.3" (109 mm)

Resolution: 480 x 272 (WQVGA)

Brightness: 1000 cd/m2 (dimmable)

Viewing Angle: 55° top, 75° bottom, 75° left, 75° right

STATUS INDICATOR

Power: Bi-Colour LED, Red / Green

Status: Tri-Colour LED, Red / Green / Blue



Part No **15901**

SMARTRACK® GLOBAL DISPLAY WITH HID READER

MECHANICAL AND ENVIRONMENTAL

Dimensions: Height: 131mm | Width: 122mm | Depth: 39.5mm

Weight: 450 g

Ambient Temperature: -20 to +65° C

IP Rating: IP65

Enclosure Materials: Polycarbonate: +PET Blend, Polycarbonate: Nylon

Enclosure Colour: Grey

Mounting: Mount type: RAM Mount Ball
Ball Size: B Size 1"
Ball Material: Rubber

POWER CONDITIONING

Operational Supply: 9 V

Maximum Power: 5 W

KEYPAD

Number of keys: 10x tactile dome

Backlit Keys: Yes

Light Sensor Installed: Yes

CARD READER

Frequency: 13.56MHz

Card Support: MIFARE Classic 1K

AUDIO

Type: Single tone piezo electric

Frequency: Minimum: 2300 Hz
Typical: 2800 Hz
Maximum: 3300 Hz

Typical Sound Pressure Level (SPL) Rating: 60 dB @ 30 cm

DISPLAY

Type: Colour LCD TFT 4.3" (109 mm)

Resolution: 480 x 272 (WQVGA)

Brightness (maximum): 1000 cd/m² (dimnable)

Viewing Angle: 55° top, 75° bottom, 75° left, 75° right

STATUS INDICATOR

Power: Bi-Colour LED, Red / Green

Status: Tri-Colour LED, Red / Green / Blue

Feature: Display screen and keypad auto dim / bright mode

ACCESSORIES



Part No 15919

SMARTRACK® OPERATOR CARD



Part No 16094

SMARTRACK® OPERATOR WRISTBAND



Part No 16095

OPERATOR CARD LANYARD



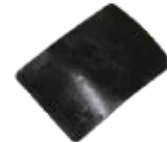
Part No 16096

OPERATOR CARD RETRACTABLE LANYARD



Part No 13855

SENSOR IMPACT SMARTRACK®



Part No 13739

ADHESIVE MOUNT TO SUIT 13855 IMPACT SENSOR



Part No 15917

KIT SMARTRACK GLOBAL WEIGHT



Part No 10284

DUAL ANTENNA GSM & GPS



Part No 15905

ANTENNA DUAL BAND WIFI & GPS



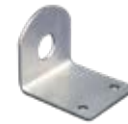
Part No 9029

RELAY



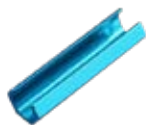
Part No 16098

HI-GAIN GROUND INDEPENDENT ANTENNA (SUITS BATTERY ELECTRIC MACHINES)



Part No 4723

ANTENNA MOUNT TO SUIT 15905, 16098



Part No 10472

FINGER WRENCH TO SUIT SMA CONNECTORS



Part No 15798

KIT BYPASS SWITCH



Part No 10977

LABEL BYPASS SMARTRACK®



Part No 6826

OPERATOR ACCESS CARD (HIDPROX) (HID ONLY)

SmarTrack® Global have a RAM mounting solution to suit most applications.

Check out the huge range of options.

RAM MOUNTS

	 <p>8464 RAM Double Socket Arm 1 3/4"</p>	 <p>8460 RAM Double socket Arm 3"</p>	 <p>8799 RAM Double Socket Arm 6"</p>
 <p>8795 RAM Base Kit to suit Maxi Vision 5" & 7" Monitors</p>	 <p>8795 + 8464</p>	 <p>8795 + 8460</p>	 <p>8795 + 8799</p>
 <p>8494 RAM Base Double U-Bolt for Rails to 1.25" in Diameter</p>	 <p>8494 + 8464</p>	 <p>8494 + 8460</p>	 <p>8494 + 8799</p>
 <p>9292 RAM Base 3" Clamp</p>	 <p>9292 + 8464</p>	 <p>9292 + 8460</p>	 <p>9292 + 8799</p>
 <p>8455 RAM Base 1/4"-20 UNC Female Thread with Hex</p>	 <p>8455 + 8464</p>	 <p>8455 + 8460</p>	 <p>8455 + 8799</p>
 <p>8493 RAM Base 2" x 3" Universal Rectangular</p>	 <p>8493 + 8464</p>	 <p>8493 + 8460</p>	 <p>8493 + 8799</p>
 <p>8798 RAM Base 2" x 6" Universal Rectangular</p>	 <p>8798 + 8464</p>	 <p>8798 + 8460</p>	 <p>8798 + 8799</p>
 <p>8492 RAM Base 2.5" Diameter Round</p>	 <p>8492 + 8464</p>	 <p>8492 + 8460</p>	 <p>8492 + 8799</p>
 <p>15475 RAM Base Diamond</p>	 <p>15475 + 8464</p>	 <p>15475 + 8460</p>	 <p>15475 + 8799</p>

HARNESSES



Part No **11265**

**LOOM UNIVERSAL SMARTRACK®
GLOBAL STANDARD**



Part No **11266**

**LOOM UNIVERSAL SMARTRACK®
GLOBAL SHORT**



Part No **15799**

LOOM VDI-4458 SMARTRACK GLOBAL



Part No **15315**

**CABLE DISPLAY SMARTRACK®
GLOBAL 1.5M**



Part No **15266**

**CABLE DISPLAY SMARTRACK®
GLOBAL 3.0M**



Part No **15267**

**CABLE DISPLAY SMARTRACK®
GLOBAL 5.0M**



Part No **15314**

**CABLE DISPLAY SMARTRACK®
GLOBAL 0.6M**



Discover more:

rct-global.com

smartracksales@rct-global.com

