



CAPABILITY STATEMENT

AUSTRALIA | AFRICA | CANADA | RUSSIA | SOUTH AMERICA | USA





TABLE OF CONTENTS

RCT GROUP PROFILE	4
HISTORY	4
ORGANIZATION	5
STAFF	6
VALUES AND VISION	6
CLIENTS	6
ACHIEVEMENTS	6
CAPABILITIES	7
Control and Automation	
Fleet Management – Mining	
Fleet Management – Industrial	
Protection Systems	
Specialized Parts	
Customized Solutions	
PROJECTS	8
Barrick Gold’s Porgera Joint Venture in the Enga Province, Papua New Guinea	
Aeris Resources’ Tritton Mine in NSW, Australia	
Eldorado Gold’s White Mountain Mine in China	
Mandalay Resources’ Costerfield Gold Mine in Victoria, Australia	
Alliance Resources’ River View Coal Mine in Kentucky, USA	
SUPPORT NETWORK	9
Service and Maintenance	
Skills Training	
PARTNERS	10
International Service Providers	
DISTRIBUTORS	10
RCT LOCATIONS	10
OH&S	10

RCT GROUP PROFILE



RCT is an innovative and dynamic Smart Technology company. We are a global leader in smart Guidance, Teleremote and Remote Control automation solutions for the mining industry.

RCT offers a range of intelligent and exclusive technology. We research, innovate, design, manufacture, deliver and support custom technology and service solutions to support clients around the world in sectors including mining, industrial, agricultural and civil.

RCT has traversed all corners of the globe delivering intelligent solutions backed by exceptional support, service and training since the 1970s. Our team has grown to more than 230 committed people working with clients in more than 71 countries worldwide, from Australia to Africa, Russia, Canada, USA and South America.

With more than 48 years of success, our Research and Innovation Hub has consistently focused on creating sustainable value and competitive advantage for our clients. Combining technical insight, with some of the best minds and hands-on experience in the world, RCT creates highly specialized technology for improved operations and custom projects.

RCT is a privately owned group, with headquarters in Perth, Australia. The success of our business is underpinned by our world-class knowledge, insight and know-how; outstanding people; all bound by the integrity and values with which we do business.

We are absolutely focused on providing our clients the advantage of Smart Technology and tangible benefits – increased profitability, productivity and safety.

RCT provides

- Engineered smart technology solutions
- Research and innovation
- Manufacture
- Installation and commission
- Skills training
- Technical support
- Consultancy and audit
- Personalized customer service
- Parts supply

HISTORY

RCT's history is extensive with more than 48 years' experience in the industry. The business began in the 1970s with the creation of Muirhead™ Protection systems which would improve and protect machines operating in harsh mining conditions. Over time it evolved to encompass four more brands including, the ControlMaster™ automation and remote control solutions, EarthTrack™ Mining Fleet management solutions, AusProTec™ and SmarTrack™ industrial solutions all of which are distributed on a global scale to help clients increase productivity, safety and profitability.

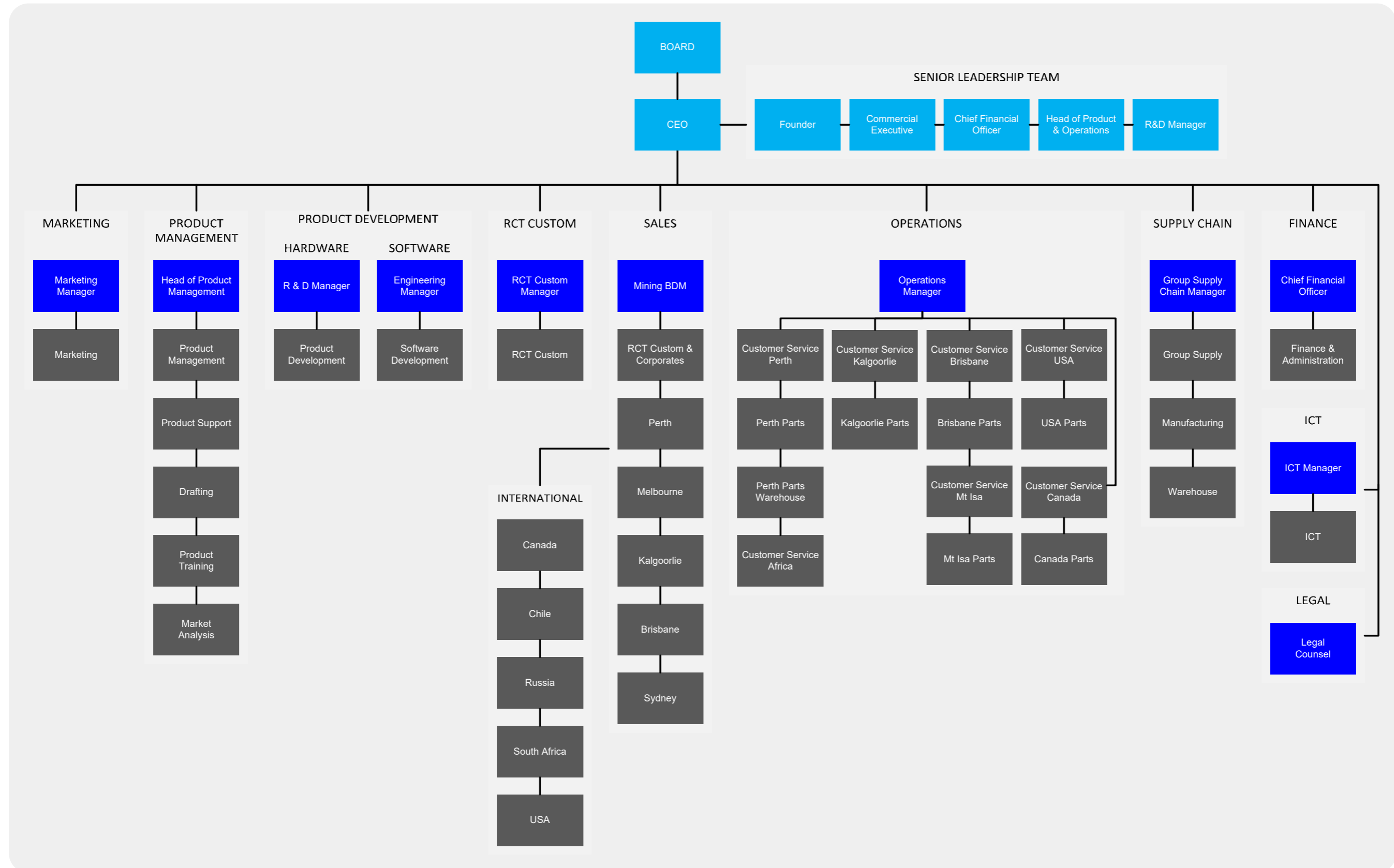


ORGANIZATION

RCT is an international group with solutions spanning five industry proven brands that are now distributed globally to improve productivity, safety and deliver overall measurable business improvements in both the mining and industrial sectors.

Since it was founded in 1972, RCT has established an extensive network of branches throughout Australia and the world, including, Africa, USA, Canada, Russia and South America.

The company's head office is located in Perth, Western Australia.



STAFF

RCT recognizes our staff is our main asset; it's the talent, dedication and hard work of the entire team that makes the company a success. Every role in the business is integral to the business, therefore the company invests in its employees and ensures it creates a space in which staff can reach their full potential.

This development has allowed the company to provide opportunities and promotions from within the Organization resulting in a skilled, high-performing cohesive and loyal team culture. Good proportions of the company's staff started their careers as apprentices and have established life long careers after attaining senior positions with the company. As a result, the company's retention of employees is impressive with many remaining at the company for 20+ years.

VALUES AND VISION

RCT's vision is to deliver Smart Technology – the right technology for the right application – to benefit our clients' business. Our values encapsulate how we do business:

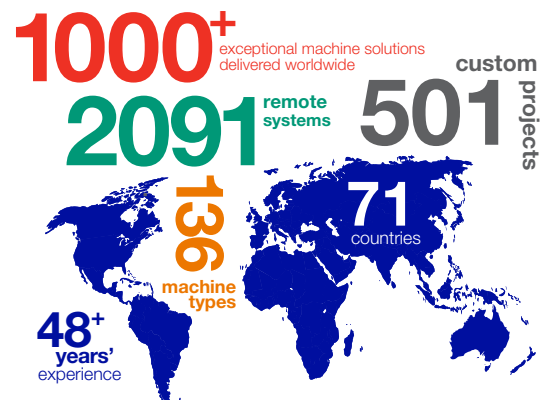
- We operate anywhere in the world, with commitment and integrity: we do what is right and we do what we say we will do.
- We observe, listen, problem solve and collaborate to provide unrivalled client service.
- We take ownership and accountability of our actions. We are pro-active and professional. Our enthusiastic 'can-do' attitude is world-renowned.
- We work actively, intensively and collectively. Personal and professional empowerment is encouraged. We cooperate as a team and thrive on going the 'extra mile'.
- We are creative. We believe in continuous improvement. We respond to the market and collaborate to bring about innovations that have purpose.
- We respect ourselves, each other and our clients. We are sensitive to cultures. We foster and grow potential, bringing shared value to places we work.

CLIENTS

RCT's client base spans worldwide, having worked on projects in more than 71 countries and counting. All of RCT's solutions are built to withstand the harshest of conditions making them suitable for all circumstances. RCT caters each solution to individual clients' needs to ensure the best outcomes.

ACHIEVEMENTS

- ✓ One of the first remote control companies in the world to remote a dozer in the late 80s.
- ✓ Retrofitted a 15-year-old D8R with ControlMaster™ Line-of-Sight when other companies deemed the task virtually impossible.
- ✓ RCT has installed more remote controls on more dozers, loaders, excavators and underground loaders across different models of mobile machines than any other company.
- ✓ Only company in the world with a Haul Truck Guidance solution that can be adapted to any make or model machine.
- ✓ 2016 Innovative Mining Solution Winner for ControlMaster™ Independent Guidance.
- ✓ 2017 Austmine's Champion of Innovation award.
- ✓ 2019 MiningWorld's Automation Champions award.



CAPABILITIES

RCT's product offering is extensive, spanning over five proven sub brands to cater to the needs of clients' worldwide.



Control and Automation

RCT's ControlMaster™ range of solutions are proven within the industry to maximize profits from mobile machines. There is a solution to cater for every application, ranging from Line-of-Sight, to Teleremote, Guidance and Independent Guidance. Our innovative technology takes the stress out of operating machines, reduces damages and helps to increase productivity and profitability. The ControlMaster™ range, like all of RCT's solutions can be fitted to any mobile machine, regardless of make or model.



Fleet Management – Mining

RCT's EarthTrack™ Fleet Management system is designed to deliver relevant accurate machine data that will empower fleet users and suppliers to make informed decisions when managing their fleet to ensure it's always operating at peak performance. EarthTrack™ is available for all machine types and brands and will capture data to fully assess machine and operator performance in real-time, presenting intelligent reports that improve fleet productivity.



Fleet Management – Industrial

SmarTrack™ is an innovative solution leading the way in the industrial market. It's providing relevant and detailed information in an easy-to-read format to a smart device. SmarTrack™ is transforming the way in which companies approach industrial fleet management. SmarTrack™ can be installed on all mobile and stationary equipment, regardless of make or model.



Protection Systems

Muirhead™ Protection Systems are designed ensure clients get the most out of their mobile mining investments. These solutions simply attach to mobile equipment to reliably prevent premature failures and unexpected breakdowns, resulting in a more profitable mining operation.



Specialized Parts

RCT's AusProTec™ range offers clients a variety of specialized electrical solutions designed and manufactured to improve the productivity and reliability of mobile mining, earthmoving and industrial equipment. The range is extensive and includes rear vision camera systems, gauges, plugs, fittings, alarm systems, connectors, hydraulics, switches, enclosures and much more.

Customized Solutions

RCT Custom division specializes in bespoke solutions that defy our off-the-shelf offering. The team can partner with a client to design, manufacture and install fully-customized solutions. Our goal is to find the answers that result in increased profitability, productivity and safety for our client. RCT Custom has the resources and depth of expertise to solve a client's problem, regardless of size or scope of the project.

PROJECTS

The following is a sample of projects listing that demonstrates the outcomes experienced with RCT's solutions.

Barrick Gold's Porgera Joint Venture in the Enga Province, Papua New Guinea



Solutions: ControlMaster™ Line-of-Sight
ControlMaster™ Teleremote
ControlMaster™ Guidance

Outcome: "This change is obviously safer for the operator but also provides the operation with increased utilization as we can now continue working over shift change resulting in an operational efficiency improvement of 16 per cent."

Aeris Resources' Tritton Mine in NSW, Australia



Solutions: ControlMaster™ Teleremote
ControlMaster™ Surface Control system

Outcome: Record tonnages achieved

Eldorado Gold's White Mountain Mine in China



Solutions: ControlMaster™ Teleremote

Outcome: "The perceived benefits in productivity were estimated between 25-30 per cent, meaning the system would pay for itself in less than six months."

Mandalay Resources' Costerfield Gold Mine in Victoria, Australia



Solutions: ControlMaster™ Teleremote
ControlMaster™ Guidance

Outcome: RCT's systems increased ore recovery to 95 per cent in blind uphole stopes at the Costerfield mine site.

Alliance Resources' River View Coal Mine in Kentucky, USA



Solutions: ControlMaster™ Line-of-Sight ATX2200

Outcome: RCT was able to retrofit a remote control to a 15-year-old machine which was deemed virtually impossible by other companies. Being able to execute this task saved the company from purchasing a new machine. The machine needed remote control technology to meet safety standards enforced by the MSHA.

SUPPORT NETWORK

Service and Maintenance



RCT provides a maintenance service for its ControlMaster™ Remote Control systems and other proprietary products. Regular servicing of equipment ensures remote equipment remains in a safe operating condition and up to RCT Original Equipment Manufacturer (OEM) standards.

National and International Distributor & Service Agent Network

RCT has an ever-expanding global service network, aimed at providing local support to clients using local people, who are readily available in the event of any emergencies.

RCT is continually expanding its service network to ensure clients in isolated areas have access to local support.

Fleet Service

RCT provides fleet servicing on a contract or permanent basis for all equipment installed with RCT OEM proprietary products, including ControlMaster™, Muirhead™, EarthTrack™ and AusProTec™.



Skills Training



RCT provides specialized skills training to empower the operators to ensure a safe operation by carrying out correct maintenance and repair procedures for all of our products. Training is delivered both on and off-site and is executed with the help of practical demonstrations to provide hands-on experience. All participants who complete training receive a globally recognized certificate from RCT's Certified Skills Training program.

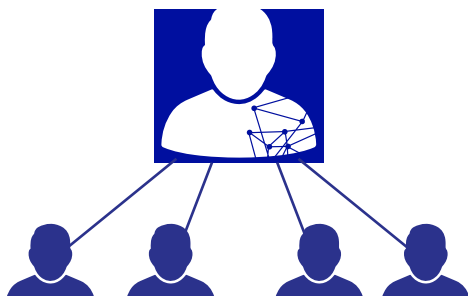
PARTNERS

International Service Providers

Vostochnaya Technica LLC - Russia
Power Train Technologies- Chile
Borusan Makina Kazakhstan- Kazakhstan
TecWise - Brazil

DISTRIBUTORS

Vostochnaya Technica LLC – Russia
Le Price International Corporation- Philippines
Fasser SpA, Chile – Chile
Fasser Overseas – Perú
Reliable Industries – North America
PT PAZ ACE Indonesia
T & H Parts, Inc. – North America
Western Suburbs Auto Electrics – Queensland
Trysome – Africa
Borusan Makina Kazakhstan
TecWise - Brazil



RCT LOCATIONS

RCT Perth – Head Office
Unit 1-6/511 Abernethy Rd, Kewdale WA 6105

RCT Perth
Unit 1/511 Abernethy Rd, Kewdale WA 6105

RCT Kalgoorlie
24 Percy Rd, Kalgoorlie WA 6430

RCT Brisbane
Unit 1 / 27 Flinders Parade, North Lakes QLD 4509

RCT Mt Isa
1A Ryan Rd, Mt Isa, QLD 4825

RCT Africa
Johannesburg, South Africa

RCT USA
7174 South 400 West, Suite 1, Midvale, Utah, 84047

RCT Canada
3307 Hwy, 144, Chelmsford, Ontario, POM 1L0

RCT Russia
Moscow, Russia

RCT South America
Reyes Lavalle 3170, office 28, Las Condes, Santiago
7550142, Chile

OH&S

Safety is embedded in RCT's values; the group recognizes the occupational health safety (OH&S) of all employees and workplace visitors including customers and contractors is of paramount importance.

Therefore the company is fully committed to ensuring the OH&S are met to create and maintain a safe working environment by managing the risks associated with their day-to-day work-related activities.

RCT recognizes that in order to ensure and maintain a safe workplace, we must provide information, instruction, and training to employees as necessary to enable them to perform their work in such a manner that they are not exposed to hazards.

Our commitment to continuous improvement ensures all employees are kept up-to-date with legislation, including all codes and guidelines. RCT complies with the Occupational Health and Safety Act 1984 and the Occupational Health and Safety Regulations 1996.

Discover more: rct-global.com

sales@rct-global.com

AUSTRALIA: +61 8 9353 6577
AFRICA: +27 83 292 4246
CANADA: +1 705 590 4001
RUSSIA / CIS: +7 910 411 1174
SOUTH AMERICA: +56 3 5229 9409
USA: +1 801 938 9214

