

# FLEET MANAGEMENT MADE EASY, ANY TIME, ANYWHERE



## CONTENT

- ▶ INTRODUCING SMARTRACK® GLOBAL
- ▶ KEY FEATURES
- ▶ OPERATOR ACCESS
- ▶ FLEET CONTROLLER
- ▶ GLOBAL REPORTING
- ▶ WEIGHT MONITORING
- ▶ SPEED MONITORING
- ▶ GPS ZONING
- ▶ OUT-OF-SERVICE
- ▶ MULTILINGUAL INTERFACE
- ▶ PRE-START AND POST-START CHECKLISTS
- ▶ MORE THAN FLEET MANAGEMENT
- ▶ GLOBAL SUPPORT
- ▶ TECHNICAL SPECIFICATIONS



**Fleet management systems are playing an increasingly vital role in optimising materials handling operations and increasing bottom line profits for companies worldwide. RCT is meeting this demand with its fleet management solution, SmarTrack® Global.**

The innovative solution provides relevant, customised information in real-time to employees at every level of the supply chain. The system can be installed on a diverse range of industrial equipment, regardless of make or model.

SmarTrack® Global can be used anywhere in the world with its multilingual user interface. It delivers machine data from multiple sites; all under one platform, any time, anywhere.

SmarTrack® Global streamlines operations and simplifies the industrial fleet management process. It empowers management with information about machine and operator activity, resulting in smarter, profit-boosting decisions.



# ANY MACHINE, ANY TIME, ANYWHERE



MACHINE &  
OPERATOR  
SAFETY



EASIER  
COMPLIANCE



COST  
REDUCTION



INCREASE  
PRODUCTIVITY





# KEY FEATURES



<p><b>BATTERY VOLTAGE</b></p> <p>Reports on battery voltage</p> <p>Provides operator warnings for low battery</p>	<p><b>SEAT MONITORING</b></p> <p>Seat violation alerts</p> <p>Auto-logout when operator is absent from seat</p>	<p><b>LIVE EMAIL ALERTS</b></p> <p>Checklist, speed, overweight, seat and buckle violations, impact, machine bypass, licence expiry, service due</p>	<p><b>CONNECTIVITY</b></p> <p>Cellular/Mobile or Wi-Fi data communications</p>
<p><b>SERVICE SCHEDULER</b></p> <p>Receive notifications for service due</p> <p>Schedules based on hours and calendar</p> <p>Customised notification intervals</p>	<p><b>CRITICAL OUTPUT</b></p> <p>Dry NO / NC contacts available to interface with machine and accessories activated by critical events such as checklist, events, and excess idle</p>	<p><b>EVENT REPORTING</b></p> <p>Impact GPS location</p> <p>Machine out-of-service on critical impact</p> <p>Posts incident, root cause analysis comments</p>	<p><b>"MESSAGE OF THE DAY"</b></p> <p>Deliver relevant safety information to operator's screen</p> <p>Different messages available depending on ongoing work issues</p>
<p><b>WORK INPUTS</b></p> <p>Capture work time from three inputs such as forward, reverse, and lift</p>	<p><b>BUCKLE MONITORING</b></p> <p>Alerts and reports when seat belt is not worn</p>		

\* Weight and speed monitoring may require additional hardware.

# OPERATOR ACCESS

SmarTrack® Global uses the latest technology for authorised personnel to identify themselves and access the system. The user interface is available in two versions:

## RFID DISPLAY

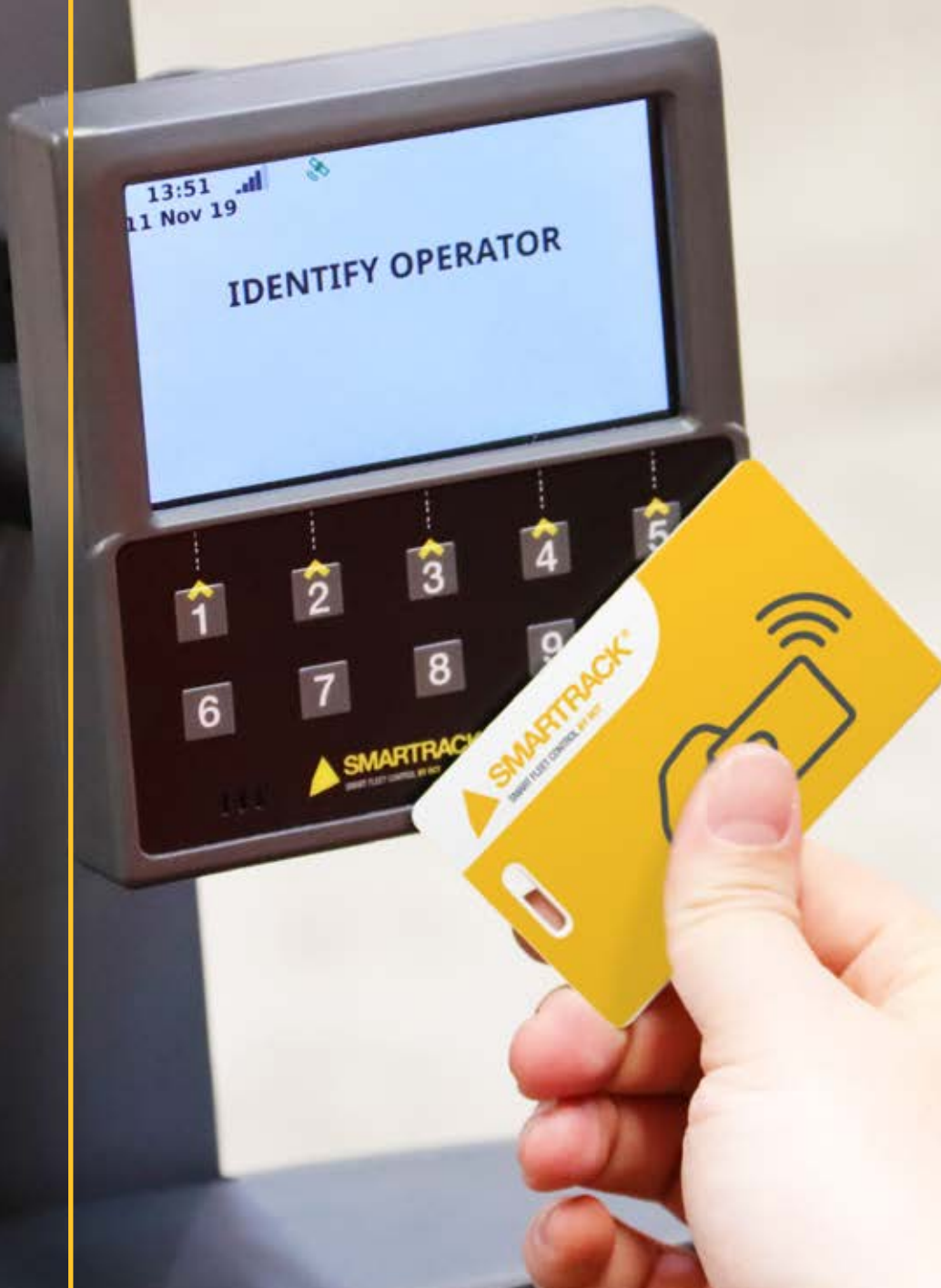
SmarTrack® Global's state-of-the-art RFID display.

- ▶ Built-in RFID card reader supporting SmarTrack® Global RFID swipe cards and wristbands
- ▶ Durable and ergonomic multifunction keypad
- ▶ Bright, full-colour display with a feature-rich user interface
- ▶ Multilingual with up to 17 different languages supported
- ▶ Audible warning alarm
- ▶ An optional heater pad for those operating temperatures lower than -35°C (-31°F)
- ▶ No complex wiring – just a single connector directly from the SmarTrack® fleet controller
- ▶ Genuine, rugged RAM mount allows for perfect positioning of the display

Note: The display comes with two RFID swipe cards (additional cards and wristbands are also available). The RFID wristbands are fully adjustable, waterproof and made of durable silicone rubber. To support easy operator setup, the operator code is printed and embossed on the cards and wristbands, respectively.

## HID DISPLAY

The HID display has all the features of the RFID but allows customers who want the flexibility of a fully integrated system that will work with over 95% of industry-used access cards.



# FLEET CONTROLLER

The lightweight and compact SmarTrack® Global fleet controller is built around the latest technology. This IP65-rated unit is simple to mount and has an integrated RGB status LED.

The fully compliant controller features a powerful microprocessor for a future-proof design ensuring ongoing feature support without sacrificing performance. It employs smart power management technology to ensure batteries on 12V Gas and Diesel machines are not discharged. With battery electric machines becoming more prevalent in the market, the controller is ready to meet the demands of these machines with inputs and operation on machines up to 48V.

The controller supports a range of input types, including digital, analogue and frequency; allowing SmarTrack® Global to be installed on any machine regardless of make or model.



A range of outputs are available that can be used to influence machine behaviour, including:

- ▶ Output to inhibit machine operation until a valid operator is identified.
- ▶ Output linked to critical events such as “impacts” which can be used to slow or halt a machine or provide a visual indication.
- ▶ GPS Zoning output to utilise the high precision GPS engine onboard the controller. This can be used to provide speed control of machines through GPS boundaries; simply managed through the web portal.

The controller includes CAN bus and supports the VDI-4458 international standard for fleet management on industrial trucks. The CAN bus also provides connectivity to the SmarTrack® impact sensor. This external sensor is rugged, compact and can be mounted at any angle. The advanced filtering algorithms makes this sensor easy to calibrate and use.

Wi-Fi and LTE (4G) controllers are also available:

- ▶ The Wi-Fi controller supports 802.11 b/g/n networks with WPA2 security and is ideal in difficult communication areas such as freezers, cool rooms and remote areas.
- ▶ The cellular controller has a truly global LTE CAT4 (4G) modem allowing for a high-speed connection, in any region of the world. SmarTrack® Global's modem not only supports 4G networks but also provides a fallback to 3G and 2G networks should the region not provide sufficient 4G coverage.



# GLOBAL REPORTING

**SMARTRACK® CAN DISPLAY DATA FROM ANY MAKE OF MACHINE ANY TIME, ANYWHERE**

- ▶ Compare data sets across multiple global sites from a single device.
- ▶ Easily identify events and pinpoint underperforming equipment.
- ▶ Scaled indicators for comparable data between sites.
- ▶ Extensive sort and filter functions to produce relevant data.
- ▶ The ability to export raw data (CSV) and graphical charts into business integration (BI) systems.

multilingual

reporting

2136

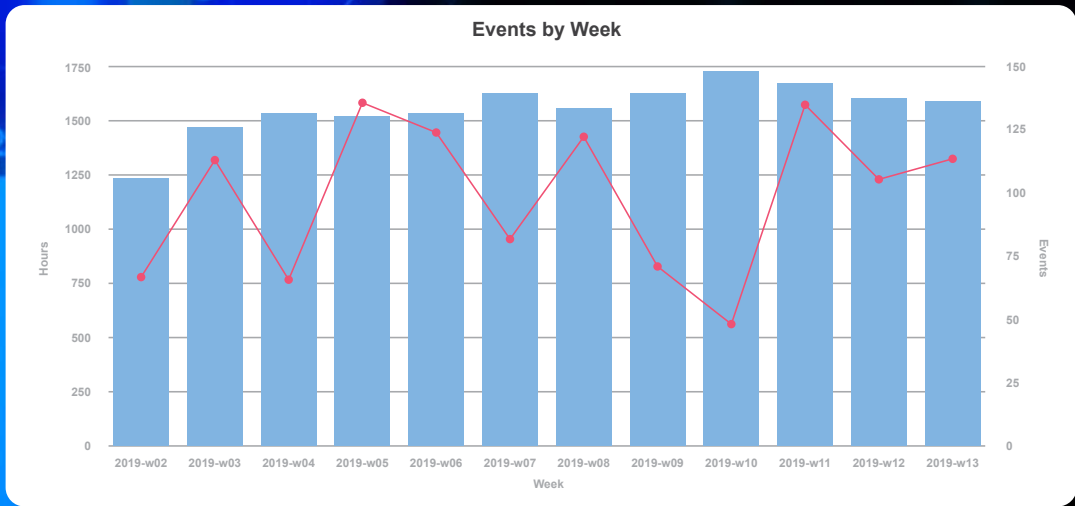
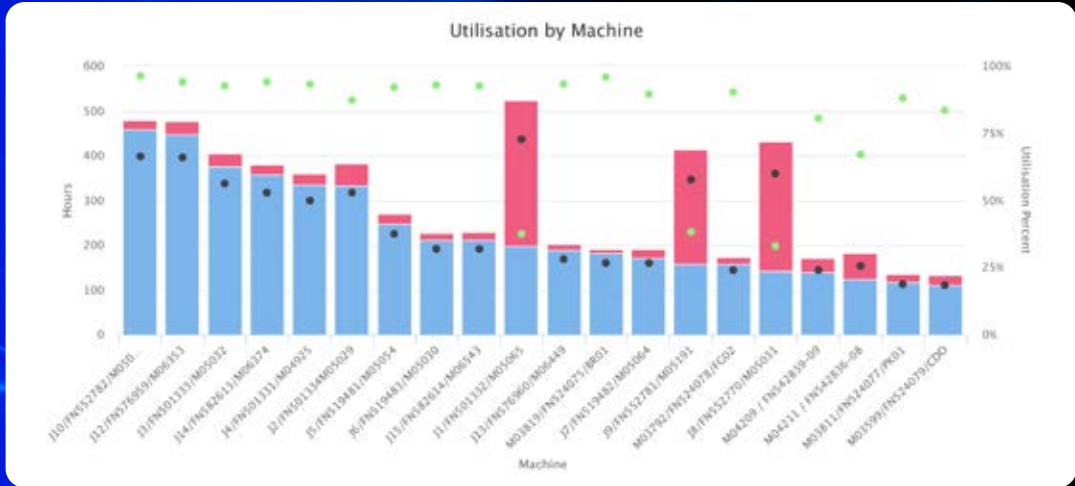
1054

1587

2128

3293





### ONLINE REPORTING

Cloud-based system with web browser reporting accessible on any smart device.

### EASY-TO-READ

Detailed and concise data.

### SCALABLE

Highlight desired outcomes to reveal specific data.

### CUSTOMISABLE

Filter data based on fields e.g. dates, machines, operators. Customised information in real-time providing relevant data to management at every level of your organisation.

### EXPORT DATA

Export information in multiple formats including CSV, PDF, PNG image or scalable SVG web graphic.



# PRE-START AND POST-START CHECKLISTS

- ▶ Eliminates paper checklists and data input requirements, reduces administration time.
- ▶ Customised checklists can be assigned based on different machine models and operator requirements.
- ▶ Supports multiple shifts with adjustable start times and operator changes.
- ▶ Checklist questions can activate maintenance and critical alerts triggering email notifications to relevant authorised people. Critical alerts will prevent machine use and place the machine use into Out-of-Service. SmarTrack® provides complete customisation of all these settings based on user preferences.
- ▶ All completed checklists can be retrieved at any time through the web portal.
- ▶ Checklists preferences can be altered easily at any time.
- ▶ Checklists can be constantly reordered ensuring operator engagement with the questions.

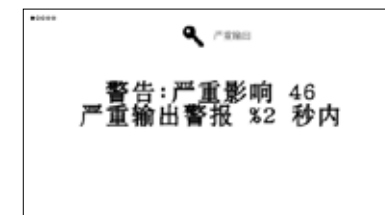
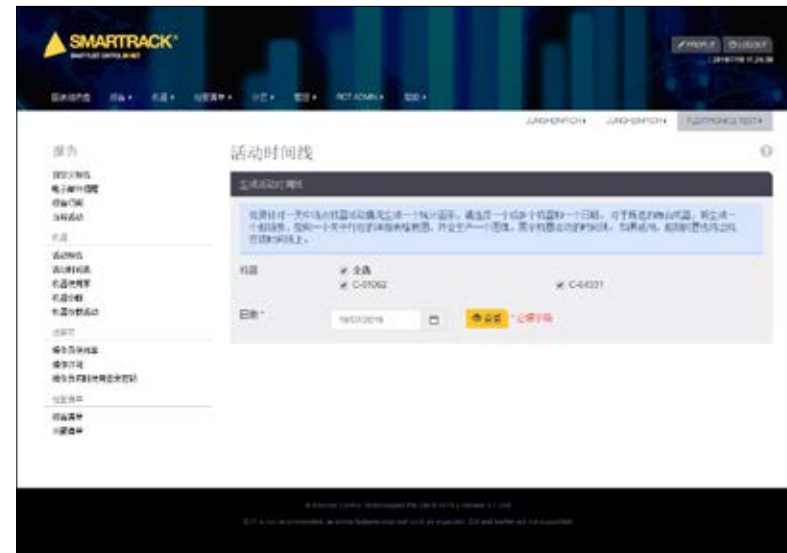


# MULTILINGUAL INTERFACE

SmarTrack® Global is multilingual-enabled for both operators and managers. Site-specific multilingual operator interfaces selectable to each operator ID.

Multilingual options for:

- ▶ Website
- ▶ Reports
- ▶ Alerts
- ▶ Checklists
- ▶ “Message of the Day”



# OUT-OF-SERVICE

SmarTrack®'s Out-of-Service feature allows machines to be 'locked'. This is to prevent use of machines which maybe damaged or unfit for use due to unplanned reasons. This feature can also prevent use of machines for planned reasons such as scheduled services.

Key benefits:

- ▶ Eliminated paper tags results in reduced administration costs.
- ▶ System limits machine access to authorised people.
- ▶ Out-of-Service display is automatically applied when a critical event occurs.
- ▶ Prevents use of machines that are due for schedule maintenance.
- ▶ Machines can be remotely placed into Out-of-Service through the web portal. This can be used to manage standby fleets or scheduled machine maintenance.
- ▶ Additional information can be recorded through the web portal allowing for more detailed records to be captured for the event.



**OUT OF SERVICE DETAILS**

FleetNumber	Department(s)	Category
KMT1-1 WM	WASTE MGMT	FORKLIFT 4 TONS

Operator	Reason	Time Set	Impact Level	Supervisor	Time Cleared
Muhamad Sharfuddin Bin Zainal	Emergency Stop	5/04/2019 3:58:14 PM	1.5	Saidin bin Yahya	5/04/2019 4:31:52 PM

Comments:

[X CLOSE](#) [SAVE](#)

FleetNumber	Operator	Time Set	Reason	DETAIL
KMT MFG-01	David Provise	25/04/2019 11:45:42 AM	Critical Impact	<a href="#">DETAIL</a>
KMT MFG-01	Mohd Fauzi Ameran	22/04/2019 12:52:11 PM	Critical Impact	<a href="#">DETAIL</a>
KMT MFG-01	Roger Thomlinson	5/04/2019 8:09:05 PM	Equipment Malfunction	<a href="#">DETAIL</a>
KMT1-1 WM	Muhamad Sharfuddin	5/04/2019 3:58:14 PM	Emergency Stop	<a href="#">DETAIL</a>
KMT1-1 WM	Maria del Carmen	3/04/2019 10:31:24 AM	Critical Impact	<a href="#">DETAIL</a>
KMT1-1 WM	Maria Hernandez	3/04/2019 10:27:44 AM	Critical Impact	<a href="#">DETAIL</a>
KMT1-1 WM	Jing Ying	3/04/2019 10:24:13 AM	Critical Impact	<a href="#">DETAIL</a>
KMT1-14 SNR	Mark Eting	23/04/2019 3:24:43 PM	Critical Impact	<a href="#">DETAIL</a>
KMT1-14 SNR	Oliver Thomas	23/04/2019 3:15:38 PM	Critical Impact	<a href="#">DETAIL</a>
KMT1-14 SNR	George Rodriguez	17/04/2019 10:42:03 AM	Critical Impact	<a href="#">DETAIL</a>
KMT1-14 SNR	Santiago Jose	9/04/2019 7:19:41 PM	Equipment Malfunction	<a href="#">DETAIL</a>
KMT1-14 SNR	Pradip Karki	5/04/2019 5:18:33 AM	Mishandling	<a href="#">DETAIL</a>



# WEIGHT MONITORING

## THE INFORMATION PROVIDED:

- ▶ Utilisation reports with weight monitoring provide additional information about how the machine is utilised including the time spent stationary and travelling with different loads.
- ▶ Reports include the number of load lifts per machine.

## FEATURES FOR:

### Operator:

- ▶ The operator can tally up multiple weight measurements.
- ▶ The operator can see the number of lifts, overloads and total weight for the trip.

### Manager:

- ▶ Reporting of weight-related data is available to monitor fleet effectiveness.
- ▶ Email alerts when there has been a weight overload on a machine.

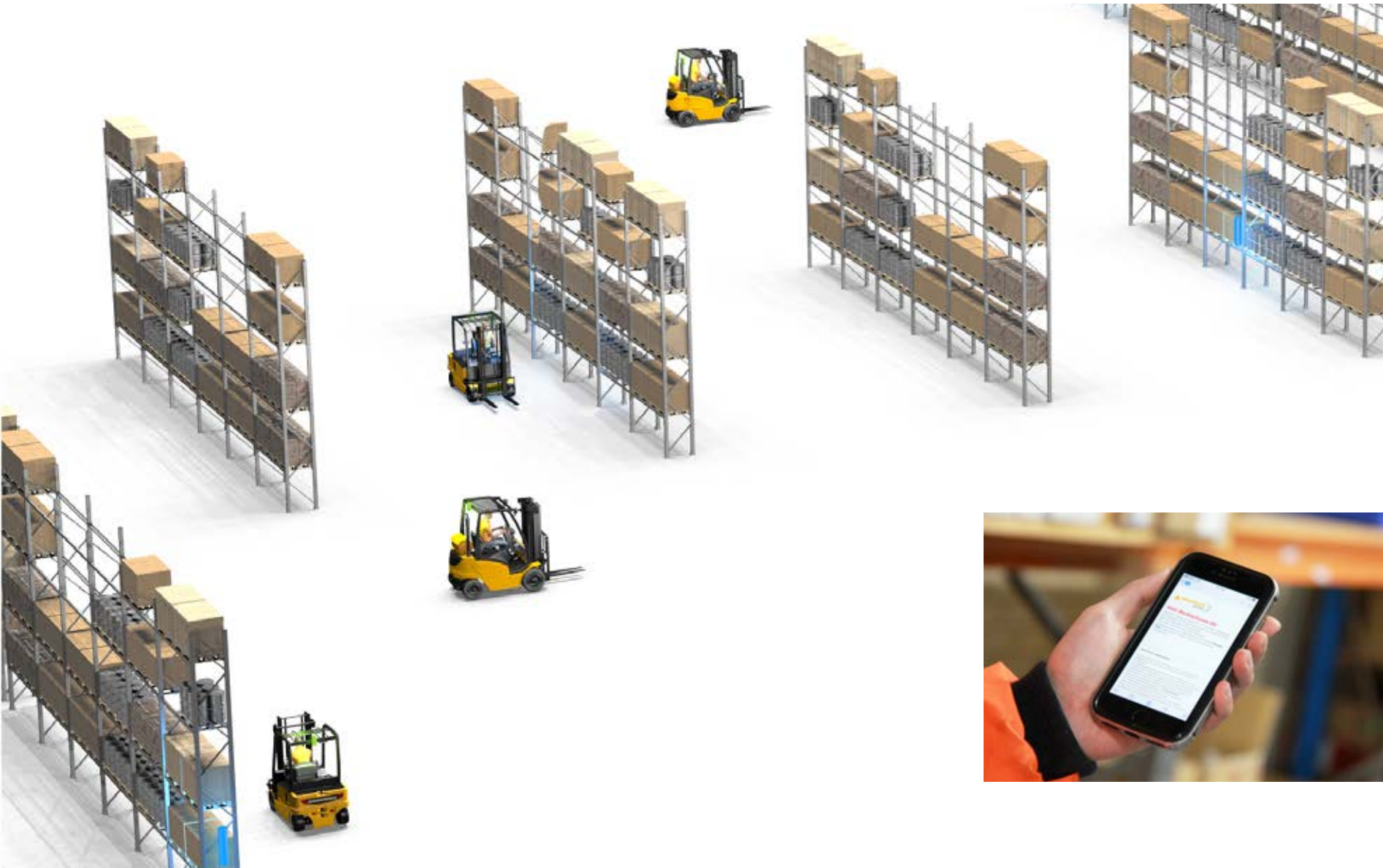




# SPEED MONITORING

## THE INFORMATION PROVIDED:

- ▶ The machine speed is displayed on the screen for the operator to view.
- ▶ When an operator exceeds a pre-set speed, there will be a warning and alarm on the SmarTrack® display. Reporting is available for all speed violations with details of the operator and duration of the offence.



# GPS ZONING

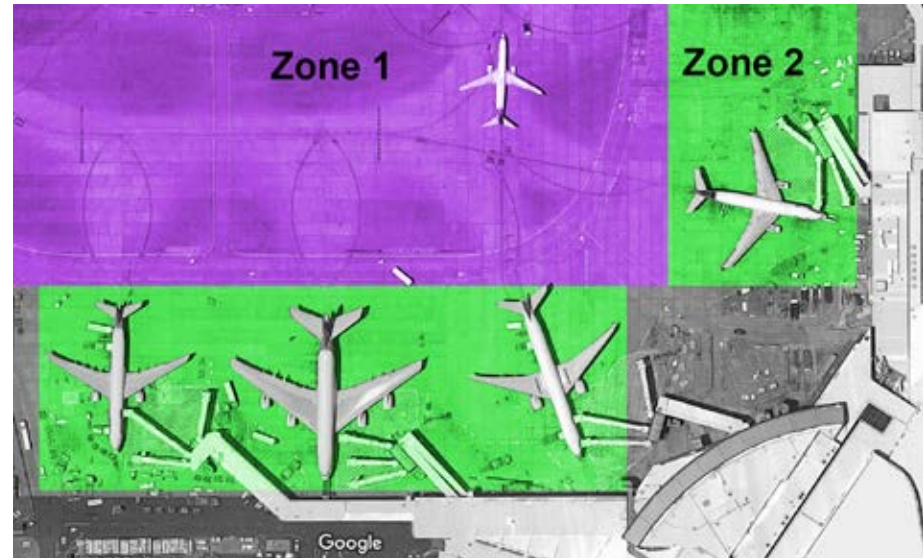
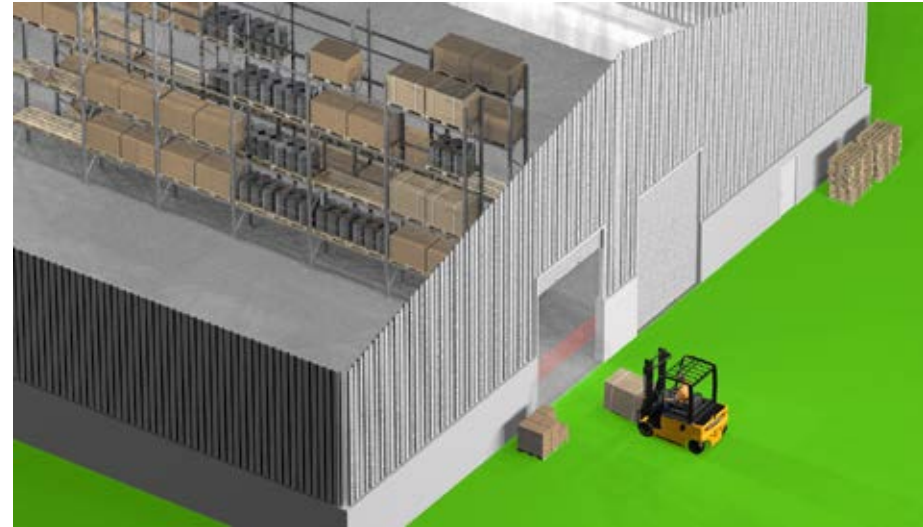
Provides a GPS zoning solution for equipment requiring speed control within specific areas.

GPS Zoning can cater for 50 different zones per site.

When interfaced with the RCT's Speed Limiter, the system activates different pre-programmed speed settings as required for different areas of operation e.g. in high traffic areas, a slow speed is engaged, whereas a higher speed can be pre-set for more open areas.

Key features/benefits:

- ▶ Suitable for larger 'open' sites.
- ▶ No on-going cost.
- ▶ Flexible - easy to change zone areas.





# MORE THAN FLEET MANAGEMENT

Discover RCT's extensive range of solutions to complement and/or enhance your fleet utilisation. These include:



# GLOBAL SUPPORT

RCT SUPPORTS CUSTOMERS IN  
OVER 71 COUNTRIES WORLDWIDE.

RCT is a full service company offering the complete safety and productivity package of skills training, parts supply, technical support and customer service support with all its proprietary products.

RCT has a worldwide distributor and service agent network to supply parts, install, and service its products.





# TECHNICAL SPECIFICATIONS – SYSTEM OVERVIEW

## SYSTEM OVERVIEW

Web Portal Requirements - Internet Access:	An internet connection is required
Web Portal Requirements - Browser Version:	We recommend Chrome, Firefox or Edge for the best user experience  Internet Explorer is not recommended  Internet Explorer 9 or below is not supported
Web Portal Requirements - Browser Plugins:	SmarTrack® does not require any plugins
Data:	Data is stored in secure, encrypted cloud infrastructure
Security:	Access is secured with SSL certificates and 256bit SHA encryption
Data Integrity:	Dual backups are employed with hourly, daily and weekly backup policies
Access Control:	Tested to 1000 users (pin number and card access)
Checklist - Maximum Questions:	Total of 30 in any Category. Categories are created by users - e.g. Gas Forklift, Battery Forklift, Diesel Forklift.
Checklist - Run Times:	Configurable to run up to three times per day
SmarTrack® - Number of Users:	Unlimited
SmarTrack® - Reports:	Available for Daily, Weekly, Monthly email delivery
SmarTrack® - Alerts:	Immediate email delivery
Supported Languages - Website:	Chinese, English, French, German, Russian, Spanish
Supported Languages - Operator Display:	Arabic, Chinese, English, Estonian, Filipino, French, German, Hindi, Indonesian, Khmer, Korean, Latvian, Russian, Spanish, Thai, Ukrainian, Vietnamese

## OPERATOR DISPLAY

Type:	LCD TFT, 480 x 272 pixels
Dimensions:	Length: 131mm (5.15") Width: 122mm (4.8") Height: 39.5mm (1.55")
Weight:	430g (0.95lbs)
Operating Temperature Range:	-20°C (-4°F) to 60°C (140°F)
Connection Types:	Industrial M12 / 4-Pin
IP Rating:	IP65

## CONTROL UNIT

Dimensions:	Length: 135mm (5.3") Width: 115mm (4.5") Height: 35mm (1.4")
Weight:	300g (0.66lbs)
IP Rating:	IP65
Mounting:	Attachment via two 7mm mounting holes
Input Voltage:	Operating 12–48V Maximum 60V
Standby Current Draw:	0.5mA
Operating Current Draw:	6A Max
Operating Temperature Range:	-20°C (-4°F)
Connection Types:	AMP Superseal 1.0mm Deutsch DT and DTM
Number of Inputs:	8 Digital / Frequency / Analogue
Number of Outputs:	8 Digital outputs 12V @ 400mA
Circuit Protection:	Short circuit and over-current protected



Discover more:

[rct-global.com](http://rct-global.com)

[smartracksales@rct-global.com](mailto:smartracksales@rct-global.com)

