

# SMARTRACK® GLOBAL COMPONENTS GUIDE

FLEET MANAGEMENT MADE EASY  
ANY TIME, ANY WHERE





<b>KITS</b>	<b>4</b>
<b>SUBSCRIPTIONS</b>	<b>6</b>
<b>DIAGRAM</b>	<b>7</b>
<b>CONTROLLERS</b>	<b>8</b>
<b>DISPLAYS</b>	<b>10</b>
<b>ACCESSORIES</b>	<b>12</b>
<b>RAM MOUNTS</b>	<b>13</b>
<b>HARNESSES</b>	<b>14</b>

# KITS



## LTE / RFID CARD READER KITS

**BASE KIT** - Consists of

\*\* not included in VDI Loom kit

1	11505	Controller Fleet SmarTrack® Global LTE	1	8460	Ram Double Socket Arm 3"
1	15913	Display SmarTrack® Global RFID	1	8492	Ram Base 2 1/2" Diameter Base
1	10284	Dual Antenna GSM and GPS	1	2600	Switch Head Key Stay Put L/H**
2	15919	RFID Operator Card	1	9476	Body With 1xN/O Contact**
1	13855	Sensor Impact SmarTrack®	1	10977	Label Bypass SmarTrack®**

### 3M DISPLAY CABLE

#### WITH STANDARD LOOM

15887

1	-	Base Kit
1	11265	Loom SmarTrack® Global
1	15266	Cable SmarTrack® Display 3m

#### WITH SHORT LOOM

15888

1	-	Base Kit
1	11266	Loom Short SmarTrack® Global
1	15266	Cable SmarTrack® Display 3m

#### WITH VDI LOOM

16027

1	-	Base Kit
1	15799	Loom VDI-4458 SmarTrack® Global
1	15266	Cable SmarTrack® Display 3m

### 5M DISPLAY CABLE

#### WITH STANDARD LOOM

15889

1	-	Base Kit
1	11265	Loom SmarTrack® Global
1	15267	Cable SmarTrack® Display 5m

#### WITH SHORT LOOM

15890

1	-	Base Kit
1	11266	Loom Short SmarTrack® Global
1	15267	Cable SmarTrack® Display 5m

#### WITH VDI LOOM

16028

1	-	Base Kit
1	15799	Loom VDI-4458 SmarTrack® Global
1	15267	Cable SmarTrack® Display 5m

## LTE / HID CARD READER KITS

**BASE KIT** - Consists of

\*\* not included in VDI Loom kit

1	11505	Controller Fleet SmarTrack® Global LTE	1	8492	Ram Base 2 1/2" Diameter Base
1	15084	Display SmarTrack® Global HID	1	2600	Switch Head Key Stay Put L/H**
1	10284	Dual Antenna GSM and GPS	1	9476	Body With 1xN/O Contact**
1	13855	Sensor Impact SmarTrack®	1	10977	Label Bypass SmarTrack®**
1	8460	Ram Double Socket Arm 3"			

### 3M DISPLAY CABLE

#### WITH STANDARD LOOM

11517

1	-	Base Kit
1	11265	Loom SmarTrack® Global
1	15266	Cable SmarTrack® Display 3m

#### WITH SHORT LOOM

15351

1	-	Base Kit
1	11266	Loom Short SmarTrack® Global
1	15266	Cable SmarTrack® Display 3m

#### WITH VDI LOOM

16029

1	-	Base Kit
1	15799	Loom VDI-4458 SmarTrack® Global
1	15266	Cable SmarTrack® Display 3m

### 5M DISPLAY CABLE

#### WITH STANDARD LOOM

15615

1	-	Base Kit
1	11265	Loom SmarTrack® Global
1	15267	Cable SmarTrack® Display 5m

#### WITH SHORT LOOM

15616

1	-	Base Kit
1	11266	Loom Short SmarTrack® Global
1	15267	Cable SmarTrack® Display 5m

#### WITH VDI LOOM

16030

1	-	Base Kit
1	15799	Loom VDI-4458 SmarTrack® Global
1	15267	Cable SmarTrack® Display 5m



## WiFi / RFID CARD READER KITS

### BASE KIT - Consists of

\*\* not included in VDI Loom kit

1	15847	Controller Fleet SmarTrack® Global WiFi	1	8460	Ram Double Socket Arm 3"
1	15913	Display SmarTrack® Global RFID	1	8492	Ram Base 2 1/2" Diameter Base
1	15905	Antenna Dual Band WiFi and GPS	1	2600	Switch Head Key Stay Put L/H**
2	15919	RFID Operator Card	1	9476	Body With 1xN/O Contact**
1	13855	Sensor Impact SmarTrack®	1	10977	Label Bypass SmarTrack®**
1	4723	Antenna Mount			

### 3M DISPLAY CABLE

#### WITH STANDARD LOOM

15891

1	-	Base Kit
1	11265	Loom SmarTrack® Global
1	15266	Cable SmarTrack® Display 3m

#### WITH SHORT LOOM

15892

1	-	Base Kit
1	11266	Loom Short SmarTrack® Global
1	15266	Cable SmarTrack® Display 3m

#### WITH VDI LOOM

16033

1	-	Base Kit
1	15799	Loom VDI-4458 SmarTrack® Global
1	15266	Cable SmarTrack® Display 3m

### 5M DISPLAY CABLE

#### WITH STANDARD LOOM

15893

1	-	Base Kit
1	11265	Loom SmarTrack® Global
1	15267	Cable SmarTrack® Display 5m

#### WITH SHORT LOOM

15894

1	-	Base Kit
1	11266	Loom Short SmarTrack® Global
1	15267	Cable SmarTrack® Display 5m

#### WITH VDI LOOM

16034

1	-	Base Kit
1	15799	Loom VDI-4458 SmarTrack® Global
1	15267	Cable SmarTrack® Display 5m

## WiFi / HID CARD READER KITS

### BASE KIT - Consists of

\*\* not included in VDI Loom kit

1	15847	Controller Fleet SmarTrack® Global WiFi	1	8492	Ram Base 2 1/2" Diameter Base
1	15084	Display SmarTrack® Global HID	1	2600	Switch Head Key Stay Put L/H**
1	15905	Antenna Dual Band WiFi and GPS	1	9476	Body With 1xN/O Contact**
1	13855	Sensor Impact SmarTrack®	1	10977	Label Bypass SmarTrack®**
1	8460	Ram Double Socket Arm 3"	1	4723	Antenna Mount

### 3M DISPLAY CABLE

#### WITH STANDARD LOOM

15895

1	-	Base Kit
1	11265	Loom SmarTrack® Global
1	15266	Cable SmarTrack® Display 3m

#### WITH SHORT LOOM

15896

1	-	Base Kit
1	11266	Loom Short SmarTrack® Global
1	15266	Cable SmarTrack® Display 3m

#### WITH VDI LOOM

16031

1	-	Base Kit
1	15799	Loom VDI-4458 SmarTrack® Global
1	15266	Cable SmarTrack® Display 3m

### 5M DISPLAY CABLE

#### WITH STANDARD LOOM

15897

1	-	Base Kit
1	11265	Loom SmarTrack® Global
1	15267	Cable SmarTrack® Display 5m

#### WITH SHORT LOOM

15898

1	-	Base Kit
1	11266	Loom Short SmarTrack® Global
1	15267	Cable SmarTrack® Display 5m

#### WITH VDI LOOM

16032

1	-	Base Kit
1	15799	Loom VDI-4458 SmarTrack® Global
1	15267	Cable SmarTrack® Display 5m

RCT have 3 zones, with ZONE 0 being for BYO SIM cards in regions not supported by the RCT SIM. Zone 1 and Zone 2 are supported regions.

Please visit the zone map on the RCT web site to confirm the zone of your region;

[rct-global.com/coverage](http://rct-global.com/coverage)

## ZONE 0

---

Part No.	Description
14028	SUPPORT/ACCESS 1YR SMARTRACK (NO-SIM WEBSITE ACCESS AND SUPPORT FOR 1 YEAR)
14030	SUPPORT/ACCESS 2YR SMARTRACK (NO-SIM WEBSITE ACCESS AND SUPPORT FOR 2 YEARS)
14034	SUPPORT/ACCESS 3YR SMARTRACK (NO-SIM WEBSITE ACCESS AND SUPPORT FOR 3 YEARS)
14036	SUPPORT/ACCESS 4YR SMARTRACK (NO-SIM WEBSITE ACCESS AND SUPPORT FOR 4 YEARS)
14038	SUPPORT/ACCESS 5YR SMARTRACK (NO-SIM WEBSITE ACCESS AND SUPPORT FOR 5 YEARS)

## ZONE 1

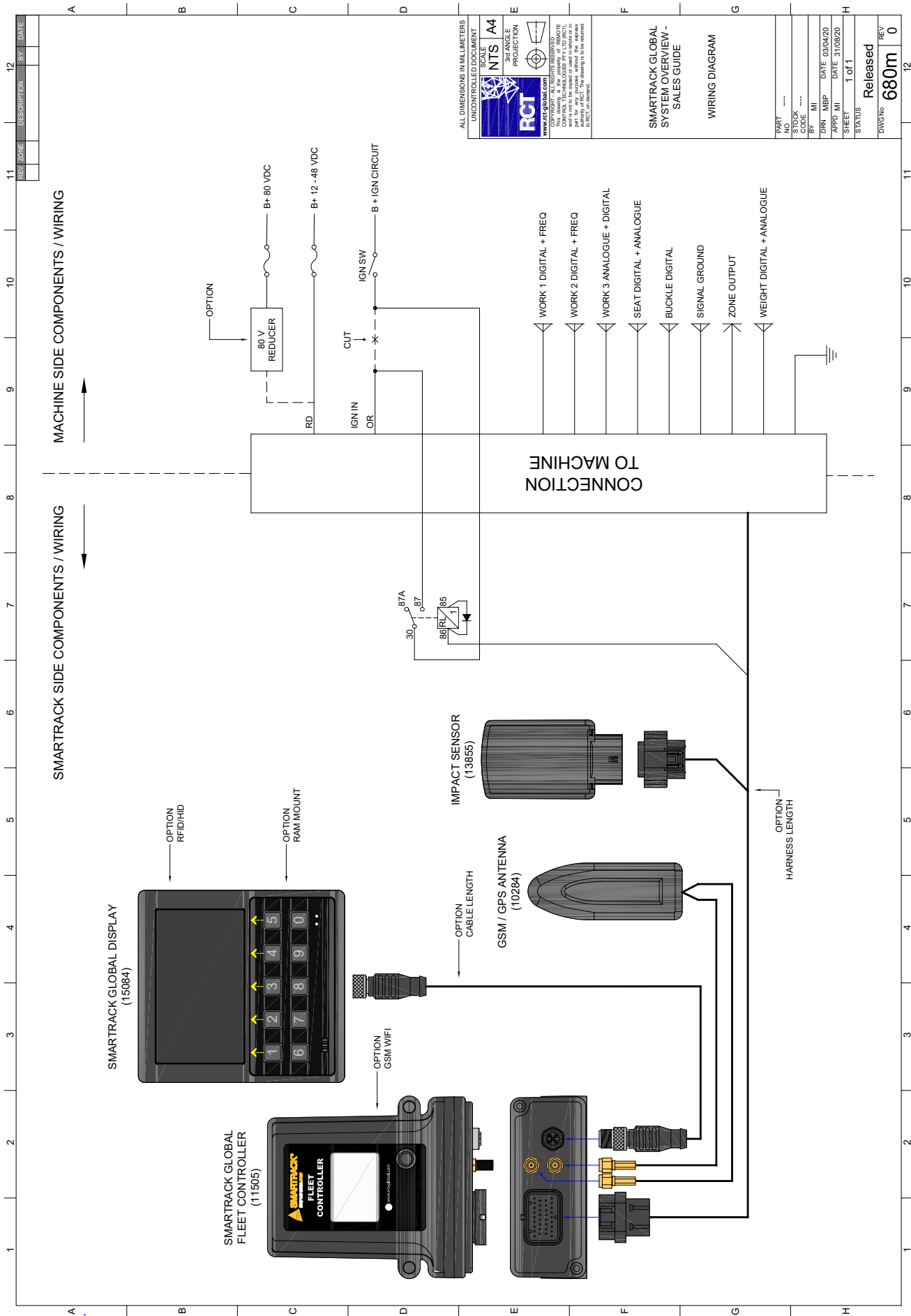
---

Part No.	Description
12131	SUPPORT/ACCESS 1YR SMARTRACK (ZONE 1 WEBSITE ACCESS AND SUPPORT FOR 1 YEAR)
12422	SUPPORT/ACCESS 2YR SMARTRACK (ZONE 1 WEBSITE ACCESS AND SUPPORT FOR 2 YEARS)
12423	SUPPORT/ACCESS 3YR SMARTRACK (ZONE 1 WEBSITE ACCESS AND SUPPORT FOR 3 YEARS)
12424	SUPPORT/ACCESS 4YR SMARTRACK (ZONE 1 WEBSITE ACCESS AND SUPPORT FOR 4 YEARS)
12130	SUPPORT/ACCESS 5YR SMARTRACK (ZONE 1 WEBSITE ACCESS AND SUPPORT FOR 5 YEARS)
12341	SUPPORT/ACCESS 6YR SMARTRACK (ZONE 1 WEBSITE ACCESS AND SUPPORT FOR 6 YEARS)
12342	SUPPORT/ACCESS 7YR SMARTRACK (ZONE 1 WEBSITE ACCESS AND SUPPORT FOR 7 YEARS)

## ZONE 2

---

Part No.	Description
13332	SUPPORT/ACCESS 1YR SMARTRACK (ZONE 2 WEBSITE ACCESS AND SUPPORT FOR 1 YEAR)
13334	SUPPORT/ACCESS 2YR SMARTRACK (ZONE 2 WEBSITE ACCESS AND SUPPORT FOR 2 YEARS)
13336	SUPPORT/ACCESS 3YR SMARTRACK (ZONE 2 WEBSITE ACCESS AND SUPPORT FOR 3 YEARS)
13338	SUPPORT/ACCESS 4YR SMARTRACK (ZONE 2 WEBSITE ACCESS AND SUPPORT FOR 4 YEARS)
13340	SUPPORT/ACCESS 5YR SMARTRACK (ZONE 2 WEBSITE ACCESS AND SUPPORT FOR 5 YEARS)



ALL DIMENSIONS IN MILLIMETERS  
UNCONTROLLED DOCUMENT

SCALE  
NTS A4  
3rd ANGLE  
PROJECTION

**FCI**  
www.fcipart.com

COPYRIGHT - ALL RIGHTS RESERVED. THIS DOCUMENT IS THE PROPERTY OF FCI. THE DRAWING IS TO BE RELEASED IN PART OR IN FULL WITHOUT THE WRITTEN CONSENT OF FCI.

SMARTRACK GLOBAL SYSTEM OVERVIEW - SALES GUIDE

WIRING DIAGRAM

PART NO.	----
STOCK CODE	----
REV	MI
URN	MEP
DATE	03/04/20
APPD MI	DATE 31/08/20
SHEET	1 of 1
STATUS	Released
DWG No	680m
REV	0

# DIAGRAM



Part No 11505

## SMARTRACK® GLOBAL FLEET CONTROLLER

### MECHANICAL AND ENVIRONMENTAL

Dimensions:	Height: 138.5mm   Width: 116mm   Depth: 48.5mm
Weight:	300 g
Ambient Temperature:	-25 to +85° C
Humidity:	0 to 95% non-condensing relative humidity
Altitude:	-1000 to 3000 metres MASL
Shock Impact:	7 g, 1 ms non-repetitive
Vibration Rating:	0.5 g to 500 Hz
IP Rating:	IP65

### POWER CONDITIONING

Operational Supply:	12 to 48 V
Maximum Input Voltage:	60 V
Maximum Current:	6 A
Quiescent Current:	5 mA

### INPUTS

Input Channels:	8
Input Impedance:	100 K Ohms
DC Measurement:	24 V, 4 V switching threshold, 33 V max. (100 V protection Input 8)
AC Measurement:	0 to 10 V, 33 V max. (60 V protection on Input 7)
Frequency Measurement:	10 to 5000 Hz
Pull up and Pull down:	12 V, 5 mA max

### OUTPUTS

Number of Output Channels:	8
Digital Output:	12 V, 400 mA max
Combined Output Current:	1 A max

### COMMUNICATIONS

Type:	LTE
-------	-----

### ANTENNA

Impedance:	50 Ohms
Cellular:	RP-SMA Female
GPS:	SMA Female, 3.3 V LNA





Part No **15847**

## SMARTRACK® GLOBAL FLEET CONTROLLER WIFI

### REGION

Europe and China

### MECHANICAL AND ENVIRONMENTAL

Dimensions:	Height: 138.5mm   Width: 116mm   Depth: 48.5mm
Weight:	300 g
Ambient Temperature:	-25 to +85° C
Humidity:	0 to 95% non-condensing relative humidity
Altitude:	-1000 to 3000 metres MASL
Shock Impact:	7 g, 1 ms non-repetitive
Vibration Rating:	0.5 g to 500 Hz
IP Rating:	IP65

### POWER CONDITIONING

Operational Supply:	12 to 48 V
Maximum Input Voltage:	60 V
Maximum Current:	6 A
Quiescent Current:	5 mA

### INPUTS

Input Channels:	8
Input Impedance:	100 K Ohms
DC Measurement:	24 V, 4 V switching threshold, 33 V max. (100 V protection Input 8)
AC Measurement:	0 to 10 V, 33 V max. (60 V protection on Input 7)
Frequency Measurement:	10 to 5000 Hz
Pull up and Pull down:	12 V, 5 mA max

### OUTPUTS

Number of Output Channels:	8
Digital Output:	12 V, 400 mA max
Combined Output Current:	1 A max

### COMMUNICATIONS

Type:	WiFi Modem
-------	------------

### ANTENNA

Impedance:	50 Ohms
Cellular:	RP-SMA Female
GPS:	SMA Female, 3.3 V LNA



Part No **15913**

## SMARTRACK® GLOBAL DISPLAY WITH RFID READER

### MECHANICAL AND ENVIRONMENTAL

Dimensions:	Height: 131mm   Width: 122mm   Depth: 39.5mm
Weight:	380 g
Ambient Temperature:	-20 to +65° C
Humidity:	0 to 95% non-condensing relative humidity
Altitude:	-1000 to 3000 metres MASL
IP Rating:	IP65

### POWER CONDITIONING

Operational Supply:	9.5 V
Maximum Power:	5 W

### KEYPAD

Number of keys:	10x tactile dome
Durability:	100,000 Actuations

### CARD READER

Frequency:	13.56 MHz
Compatibility:	SmarTrack® Programmed Operator Card

### AUDIO

Type:	Single tone piezo electric
Frequency:	2800 Hz
SPL:	80 dB @ 30 cm

### DISPLAY

Type:	Colour LCD TFT 109 mm
Resolution:	480 x 272 (WQVGA)
Brightness:	800 cd/m2 nominal
Viewing Angle:	55° top, 75° bottom, 75° left, 75° right

### STATUS INDICATOR

Power:	Bi-Colour, Red / Green
Status:	Tri-Colour, Red / Green / Blue



Part No **15084**

---

## **SMARTRACK® GLOBAL DISPLAY WITH HID READER**

### **MECHANICAL AND ENVIRONMENTAL**

Dimensions: Height: 131mm | Width: 122mm | Depth: 39.5mm

Weight: 380 g

Ambient Temperature: -20 to +65° C

Humidity: 0 to 95% non-condensing relative humidity

Altitude: -1000 to 3000 metres MASL

IP Rating: IP65

### **POWER CONDITIONING**

Operational Supply: 9.5 V

Maximum Power: 5 W

### **KEYPAD**

Number of keys: 10x tactile dome

Durability: 100,000 Actuations

### **CARD READER**

Frequency: 13.56MHz

Compatibility: MIFARE® Classic, MIFARE DESFire® 0.6, MIFARE DESFire EV1, HID: iCLASS® Standard/SE/SR

Frequency: 125 KHz

Compatibility: HID Prox, Indala Prox, EM4102, AWID Prox

### **AUDIO**

Type: Single tone piezo electric

Frequency: 2800 Hz

SPL: 80 dB @ 30 cm

### **DISPLAY**

Type: Colour LCD TFT 109 mm

Resolution: 480 x 272 (WQVGA)

Brightness: 800 cd/m<sup>2</sup> nominal

Viewing Angle: 55° top, 75° bottom, 75° left, 75° right

### **STATUS INDICATOR**

Power: Bi-Colour, Red / Green

Status: Tri-Colour, Red / Green / Blue

### **AMBIENT LIGHT SENSOR**

Type: LDR

Control: Via software application

# ACCESSORIES



Part No 15919

**SMARTRACK® OPERATOR CARD**



Part No 16094

**SMARTRACK® OPERATOR WRISTBAND**



Part No 16095

**OPERATOR CARD LANYARD**



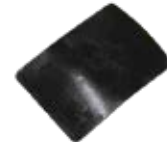
Part No 16096

**OPERATOR CARD RETRACTABLE LANYARD**



Part No 13855

**SENSOR IMPACT SMARTRACK®**



Part No 13739

**ADHESIVE MOUNT TO SUIT 13855 IMPACT SENSOR**



Part No 15917

**KIT SMARTRACK GLOBAL WEIGHT**



Part No 10284

**DUAL ANTENNA GSM & GPS**



Part No 15905

**ANTENNA DUAL BAND WIFI & GPS**



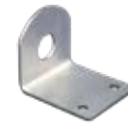
Part No 9029

**RELAY**



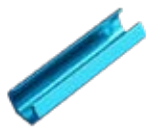
Part No 16098

**HI-GAIN GROUND INDEPENDENT ANTENNA (SUITS BATTERY ELECTRIC MACHINES)**



Part No 4723

**ANTENNA MOUNT TO SUIT 15905, 16098**



Part No 10472

**FINGER WRENCH TO SUIT SMA CONNECTORS**



Part No 15798

**KIT BYPASS SWITCH**



Part No 10977

**LABEL BYPASS SMARTRACK®**



Part No 6826

**OPERATOR ACCESS CARD (HIDPROX) (HID ONLY)**

SmarTrack® Global have a RAM mounting solution to suit most applications.

Check out the huge range of options.

# RAM MOUNTS

	 <p><b>8464</b> RAM Double Socket Arm 1 3/4"</p>	 <p><b>8460</b> RAM Double socket Arm 3"</p>	 <p><b>8799</b> RAM Double Socket Arm 6"</p>
 <p><b>8795</b> RAM Base Kit to suit Maxi Vision 5" &amp; 7" Monitors</p>	 <p><b>8795 + 8464</b></p>	 <p><b>8795 + 8460</b></p>	 <p><b>8795 + 8799</b></p>
 <p><b>8494</b> RAM Base Double U-Bolt for Rails to 1.25" in Diameter</p>	 <p><b>8494 + 8464</b></p>	 <p><b>8494 + 8460</b></p>	 <p><b>8494 + 8799</b></p>
 <p><b>9292</b> RAM Base 3" Clamp</p>	 <p><b>9292 + 8464</b></p>	 <p><b>9292 + 8460</b></p>	 <p><b>9292 + 8799</b></p>
 <p><b>8455</b> RAM Base 1/4"-20 UNC Female Thread with Hex</p>	 <p><b>8455 + 8464</b></p>	 <p><b>8455 + 8460</b></p>	 <p><b>8455 + 8799</b></p>
 <p><b>8493</b> RAM Base 2" x 3" Universal Rectangular</p>	 <p><b>8493 + 8464</b></p>	 <p><b>8493 + 8460</b></p>	 <p><b>8493 + 8799</b></p>
 <p><b>8798</b> RAM Base 2" x 6" Universal Rectangular</p>	 <p><b>8798 + 8464</b></p>	 <p><b>8798 + 8460</b></p>	 <p><b>8798 + 8799</b></p>
 <p><b>8492</b> RAM Base 2.5" Diameter Round</p>	 <p><b>8492 + 8464</b></p>	 <p><b>8492 + 8460</b></p>	 <p><b>8492 + 8799</b></p>
 <p><b>15475</b> RAM Base Diamond</p>	 <p><b>15475 + 8464</b></p>	 <p><b>15475 + 8460</b></p>	 <p><b>15475 + 8799</b></p>

# HARNESSES



Part No **11265**

---

**LOOM UNIVERSAL SMARTRACK®  
GLOBAL STANDARD**



Part No **11266**

---

**LOOM UNIVERSAL SMARTRACK®  
GLOBAL SHORT**



Part No **15799**

---

**LOOM VDI-4458 SMARTRACK GLOBAL**



Part No **15315**

---

**CABLE DISPLAY SMARTRACK®  
GLOBAL 1.5M**



Part No **15266**

---

**CABLE DISPLAY SMARTRACK®  
GLOBAL 3.0M**



Part No **15267**

---

**CABLE DISPLAY SMARTRACK®  
GLOBAL 5.0M**



Part No **15314**

---

**CABLE DISPLAY SMARTRACK®  
GLOBAL 0.6M**





Discover more:

[rct-global.com](http://rct-global.com)

[smartracksales@rct-global.com](mailto:smartracksales@rct-global.com)

