

FLEET MANAGEMENT MADE EASY, ANY TIME, ANY WHERE



CONTENT

- ▶ INTRODUCING SMARTRACK™ GLOBAL
- ▶ KEY FEATURES
- ▶ GLOBAL REPORTING
- ▶ WEIGHT MONITORING
- ▶ SPEED MONITORING
- ▶ GPS ZONING
- ▶ OUT-OF-SERVICE
- ▶ MULTILINGUAL INTERFACE
- ▶ PRE-START AND POST-START CHECKLISTS
- ▶ MORE THAN FLEET MANAGEMENT
- ▶ GLOBAL SUPPORT
- ▶ TECHNICAL SPECIFICATIONS

Fleet management systems are playing an increasingly vital role in optimizing materials handling operations and increasing bottom line profits for companies worldwide. RCT is meeting this demand with its fleet management solution, SmarTrack™ Global.

The innovative solution provides relevant, customized information in real-time to employees at every level of the supply chain. The system can be installed on a diverse range of industrial equipment, regardless of make or model.

SmarTrack™ Global can be used anywhere in the world with its multilingual user interface. It delivers machine data from multiple sites; all under one platform, any time, any where.

SmarTrack™ Global streamlines operations and simplifies the industrial fleet management process. It empowers management with information about machine and operator activity, resulting in smarter, profit-boosting decisions.



ANY MACHINE,
ANY TIME,
ANY WHERE



MACHINE &
OPERATOR
SAFETY



EASIER
COMPLIANCE



COST
REDUCTION



INCREASE
PRODUCTIVITY



KEY FEATURES

GLOBAL
REPORTING

PRE-START AND POST-
START CHECKLISTS

MULTILINGUAL
INTERFACE

OUT-OF-
SERVICE

WEIGHT AND SPEED
MONITORING*

GPS
ZONING

<p>BATTERY VOLTAGE</p> <p>Reports on battery voltage</p> <p>Provides operator warnings for low battery</p>	<p>SEAT MONITORING</p> <p>Report operator seat time</p> <p>Auto-logout when operator is absent from seat</p>	<p>LIVE EMAIL ALERTS</p> <p>Checklist, speed, overweight, seat and buckle violations, impact, machine bypass, license expiry, service due</p>	<p>"MESSAGE OF THE DAY"</p> <p>Deliver relevant safety information to operator's screen</p> <p>Different messages available depending on ongoing work issues</p>
<p>SERVICE SCHEDULER</p> <p>Receive notifications for service due</p> <p>Schedules based on hours and calendar</p> <p>Customized notification intervals</p>	<p>OPERATOR ACCESS CONTROL</p> <p>Only licensed operators are able to use the equipment via card reader or keypad</p> <p>Identify license information, expiry dates, and training requirements</p>	<p>CRITICAL OUTPUT</p> <p>Dry NO / NC contacts available to interface with machine and accessories activated by critical events such as checklist, events, and excess idle</p>	<p>EVENT REPORTING</p> <p>Impact GPS location</p> <p>Machine out-of-service on critical impact</p> <p>Posts incident, root cause analysis comments</p>
<p>CONNECTIVITY</p> <p>Cellular/Mobile data communications on</p>	<p>WORK INPUTS</p> <p>Capture work time from three inputs such as forward, reverse, and lift</p>	<p>BUCKLE MONITORING</p> <p>Alerts and reports when seat belt is not worn</p>	<p>WEIGHT REPORTING</p> <p>Reports on loaded times, utilization, lift counts and total weight summaries</p>

* Weight and speed monitoring may require additional hardware.

PRE-START AND POST-START CHECKLISTS

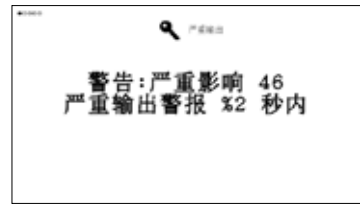
- ▶ Eliminates paper checklists and data input requirements, reduces administration time.
- ▶ Customized checklists can be assigned based on different machine models and operator requirements.
- ▶ Supports multiple shifts with adjustable start times and operator changes.
- ▶ Checklist questions can activate maintenance and critical alerts triggering email notifications to relevant authorized people. Critical alerts will prevent machine use and place the machine use into Out-of-Service. SmarTrack™ provides complete customization of all these settings based on user preferences.
- ▶ All completed checklists can be retrieved at any time through the web portal.
- ▶ Checklists preferences can be altered easily at any time.
- ▶ Checklists can be constantly reordered ensuring operator engagement with the questions.



MULTILINGUAL INTERFACE

SmarTrack™ Global is multilingual-enabled for both operators and managers. Site-specific multilingual operator interfaces selectable to each operator ID. Multilingual options for:

- ▶ Website
- ▶ Reports
- ▶ Alerts
- ▶ Checklists
- ▶ “Message of the Day”



OUT-OF-SERVICE

SmarTrack™'s Out-of-Service feature allows machines to be 'locked'. This is to prevent use of machines which maybe damaged or unfit for use due to unplanned reasons. This feature can also prevent use of machines for planned reasons such as scheduled services.

Key benefits:

- ▶ Eliminated paper tags results in reduced administration costs.
- ▶ System limits machine access to authorized people.
- ▶ Out-of-Service display is automatically applied when a critical event occurs.
- ▶ Prevents use of machines that are due for schedule maintenance.
- ▶ Machines can be remotely placed into Out-of-Service through the web portal. This can be used to manage standby fleets or scheduled machine maintenance.
- ▶ Additional information can be recorded through the web portal allowing for more detailed records to be captured for the event.

FileNumber	Department(s)	Category
KMT1-1 WM	WASTE MGMT	FORKLIFT 4 TONS

Operator	Reason	Time Set	Impact Level	Supervisor	Time Cleared
Muhamad Sharifuddin Bin Zainal	Emergency Stop	5/04/2019 3:58:14 PM	1.5	Sudin bin Yahya	5/04/2019 4:31:52 PM

Comments: Clear your comments



FileNumber	Operator	Time Set	Reason	DETAIL
KMT MFG-01	David Prowse	25/04/2019 11:46:42 AM	Critical Impact	DETAIL
KMT MFG-01	Mohd Fauzi Amerin	22/04/2019 12:52:11 PM	Critical Impact	DETAIL
KMT MFG-01	Roger Thomlinson	5/04/2019 5:00:05 PM	Equipment Malfunction	DETAIL
KMT1-1 WM	Muhamad Sharifuddin	5/04/2019 3:58:14 PM	Emergency Stop	DETAIL
KMT1-1 WM	Maria del Carmen	3/04/2019 10:31:24 AM	Critical Impact	DETAIL
KMT1-1 WM	Maria Hernandez	3/04/2019 10:27:44 AM	Critical Impact	DETAIL
KMT1-1 WM	Jing Ying	3/04/2019 10:24:13 AM	Critical Impact	DETAIL
KMT1-14 SNR	Mark Eling	23/04/2019 3:24:43 PM	Critical Impact	DETAIL
KMT1-14 SNR	Oliver Thomas	23/04/2019 3:15:38 PM	Critical Impact	DETAIL
KMT1-14 SNR	George Rodriguez	17/04/2019 10:42:03 AM	Critical Impact	DETAIL
KMT1-14 SNR	Santiago Jose	9/04/2019 7:16:41 PM	Equipment Malfunction	DETAIL
KMT1-14 SNR	Pradip Karki	5/04/2019 5:18:33 AM	Mishandling	DETAIL

WEIGHT MONITORING

THE INFORMATION PROVIDED:

- ▶ Utilization reports with weight monitoring provide additional information about how the machine is utilized including the time spent stationary and traveling with different loads.
- ▶ Reports include the number of load lifts per machine.

FEATURES FOR:

Operator:

- ▶ The operator can tally up multiple weight measurements.
- ▶ The operator can see the number of lifts, overloads and total weight for the trip.

Manager:

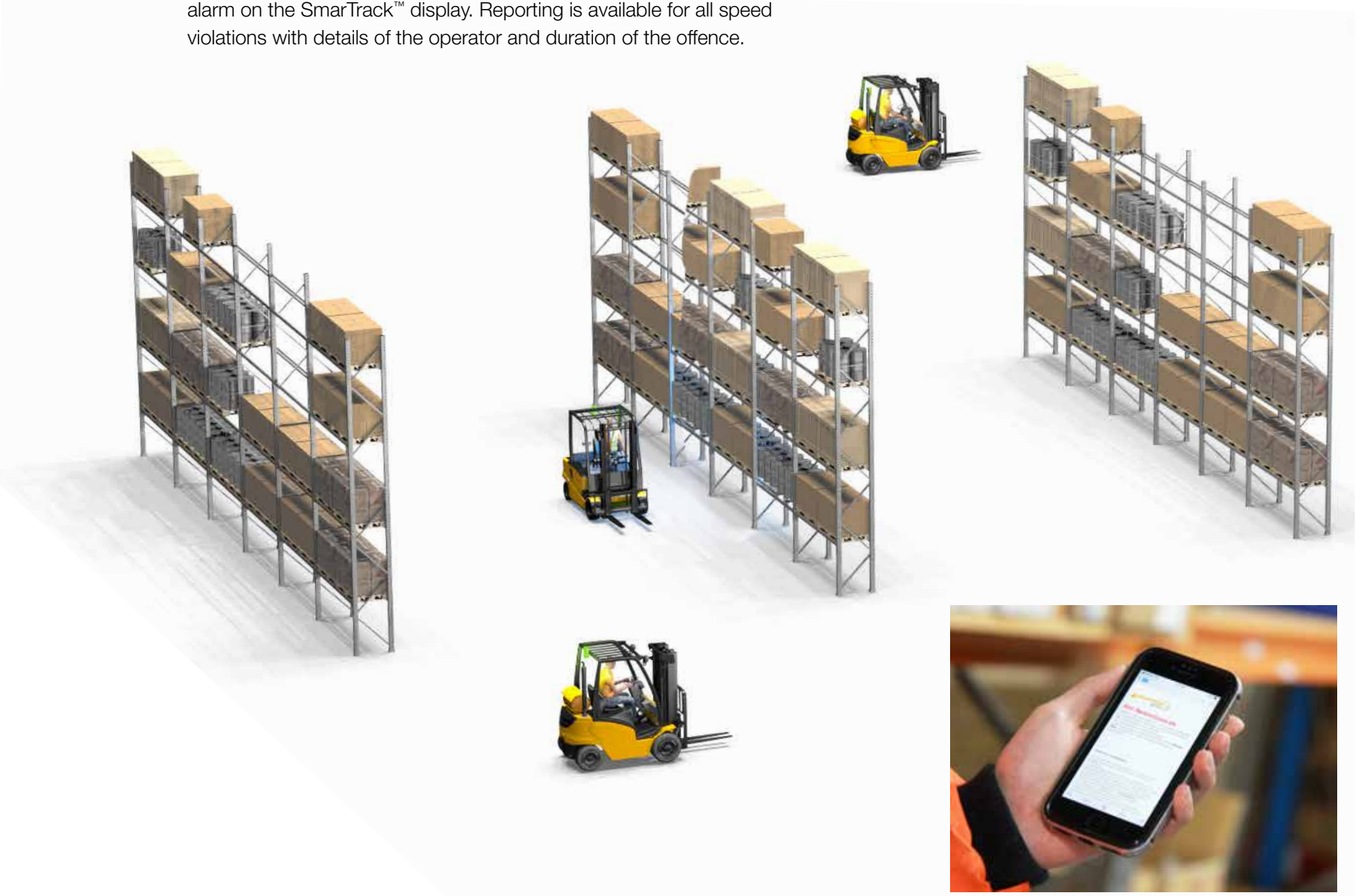
- ▶ Reporting of weight-related data is available to monitor fleet effectiveness.
- ▶ Email alerts when there has been a weight overload on a machine.



SPEED MONITORING

THE INFORMATION PROVIDED:

- ▶ The machine speed is displayed on the screen for the operator to view.
- ▶ When an operator exceeds a pre-set speed, there will be a warning and alarm on the SmarTrack™ display. Reporting is available for all speed violations with details of the operator and duration of the offence.



GPS ZONING

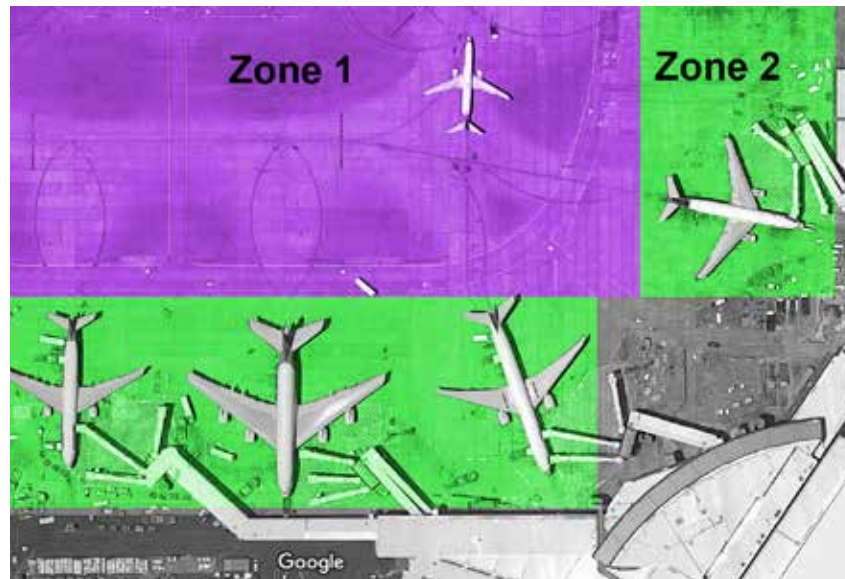
Provides a geofencing solution for equipment requiring speed control within specific areas.

GPS Zoning can cater for 50 different zones per site.

When interfaced with the RCT's Speed Limiter, the system activates different pre-programmed speed settings as required for different areas of operation e.g. in high traffic areas, a slow speed is engaged, whereas a higher speed can be pre-set for more open areas.

Key features/benefits:

- ▶ Suitable for larger 'open' sites.
- ▶ No on-going cost.
- ▶ Flexible - easy to change zone areas.



MORE THAN FLEET MANAGEMENT

Discover RCT's extensive range of solutions to complement and/or enhance your fleet utilization. These include:

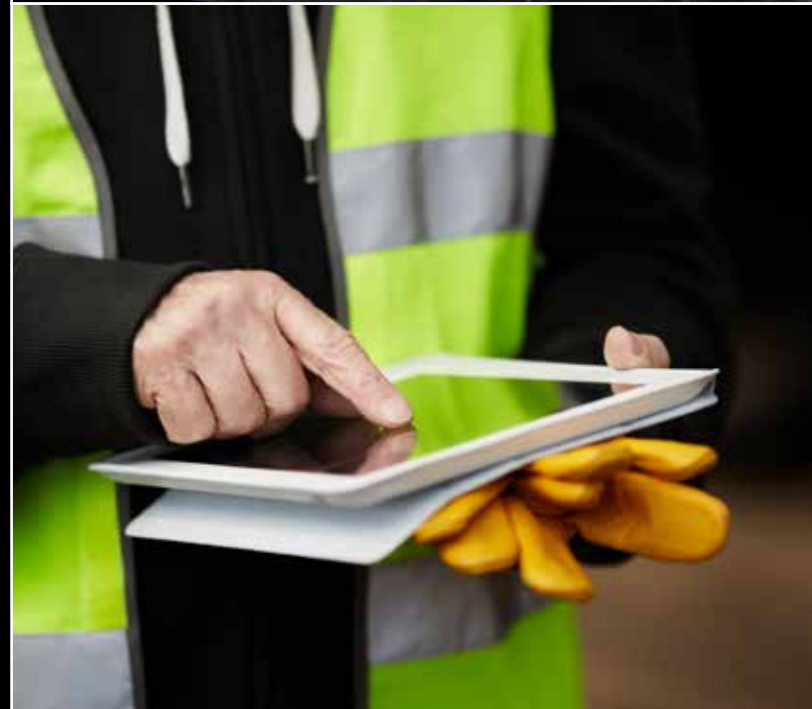


GLOBAL SUPPORT

RCT SUPPORTS CUSTOMERS IN OVER 71 COUNTRIES WORLDWIDE.

RCT is a full service company offering the complete safety and productivity package of skills training, parts supply, technical support and customer service support with all its proprietary products.

RCT has a worldwide distributor and service agent network to supply parts, install, and service its products.



TECHNICAL SPECIFICATIONS – SYSTEM OVERVIEW

SYSTEM OVERVIEW

Web Portal Requirements - Internet Access:	An internet connection is required
Web Portal Requirements - Browser Version:	We recommend Chrome, Firefox or Edge for the best user experience Internet Explorer is not recommended Internet Explorer 9 or below is not supported
Web Portal Requirements - Browser Plugins:	SmarTrack™ does not require any plugins
Data:	Data is stored in secure, encrypted cloud infrastructure
Security:	Access is secured with SSL certificates and 256bit SHA encryption
Data Integrity:	Dual backups are employed with hourly, daily and weekly backup policies
Access Control:	Tested to 1000 users (pin number and card access)
Checklist - Maximum Questions:	Total of 30 in any Category. Categories are created by users - e.g. Gas Forklift, Battery Forklift, Diesel Forklift.
Checklist - Run Times:	Configurable to run up to three times per day
SmarTrack™ - Number of Users:	Unlimited
SmarTrack™ - Reports:	Available for Daily, Weekly, Monthly email delivery
SmarTrack™ - Alerts:	Immediate email delivery
Supported Languages - Website:	Chinese, English, French, German, Russian, Spanish
Supported Languages - Operator Display:	Arabic, Chinese, English, Estonian, Filipino, French, German, Hindi, Indonesian, Khmer, Korean, Latvian, Russian, Spanish, Thai, Ukrainian, Vietnamese

OPERATOR DISPLAY

Type:	LCD TFT, 480 x 272 pixels
Dimensions:	Length: 142mm (5.6") Width: 98mm (3.85") Height: 49mm (1.9")
Weight:	430g (0.95lbs)
Operating Temperature Range:	-20°C (-4°F) to 60°C (140°F)
Connection Types:	Industrial M12 / 5Pin
IP Rating:	IP65

CONTROL UNIT

Dimensions:	Length: 135mm (5.3") Width: 115mm (4.5") Height: 35mm (1.4")
Weight:	300g (0.66lbs)
IP Rating:	IP65
Mounting:	Attachment via two 7mm mounting holes
Input Voltage:	Operating 12-80V Maximum 100V
Standby Current Draw:	0.5mA
Operating Current Draw:	6A Max
Operating Temperature Range:	-20°C (-4°F)
Connection Types:	AMP Superseal 1.0mm Deutsch DT and DTM
Number of Inputs:	8 Digital / Frequency / Analogue
Number of Outputs:	8 Digital outputs 12V @ 400mA
Circuit Protection:	Short circuit and over-current protected



Discover more:

rct-global.com

smartracksales@rct-global.com

