

FLEET MANAGEMENT MADE EASY,
ANY TIME, ANY WHERE

FUTURE RELEASE



Fleet management systems are playing an increasingly vital role in optimising materials handling operations and increasing bottom line profits for companies worldwide. RCT is meeting this demand with its fleet management solution, SmarTrack® Global.

The innovative solution provides relevant, customised information in real-time to employees at every level of the supply chain. The system can be installed on a diverse range of industrial equipment, regardless of make or model.

SmarTrack® Global can be used anywhere in the world with its multilingual user interface. It delivers machine data from multiple sites; all under one platform, any time, any where.

SmarTrack® Global streamlines operations and simplifies the industrial fleet management process. It empowers management with information about machine and operator activity, resulting in smarter, profit-boosting decisions.

CONTENT

- ▶ INTRODUCING SMARTRACK® GLOBAL
- ▶ KEY FEATURES
- ▶ GLOBAL REPORTING
- ▶ WEIGHT MONITORING
- ▶ SPEED MONITORING
- ▶ GPS ZONING
- ▶ OUT-OF-SERVICE
- ▶ MULTILINGUAL INTERFACE
- ▶ PRE-START AND POST-START CHECKLISTS
- ▶ MORE THAN FLEET MANAGEMENT
- ▶ GLOBAL SUPPORT
- ▶ TECHNICAL SPECIFICATIONS



ANY MACHINE,
ANY TIME,
ANY WHERE



MACHINE &
OPERATOR
SAFETY



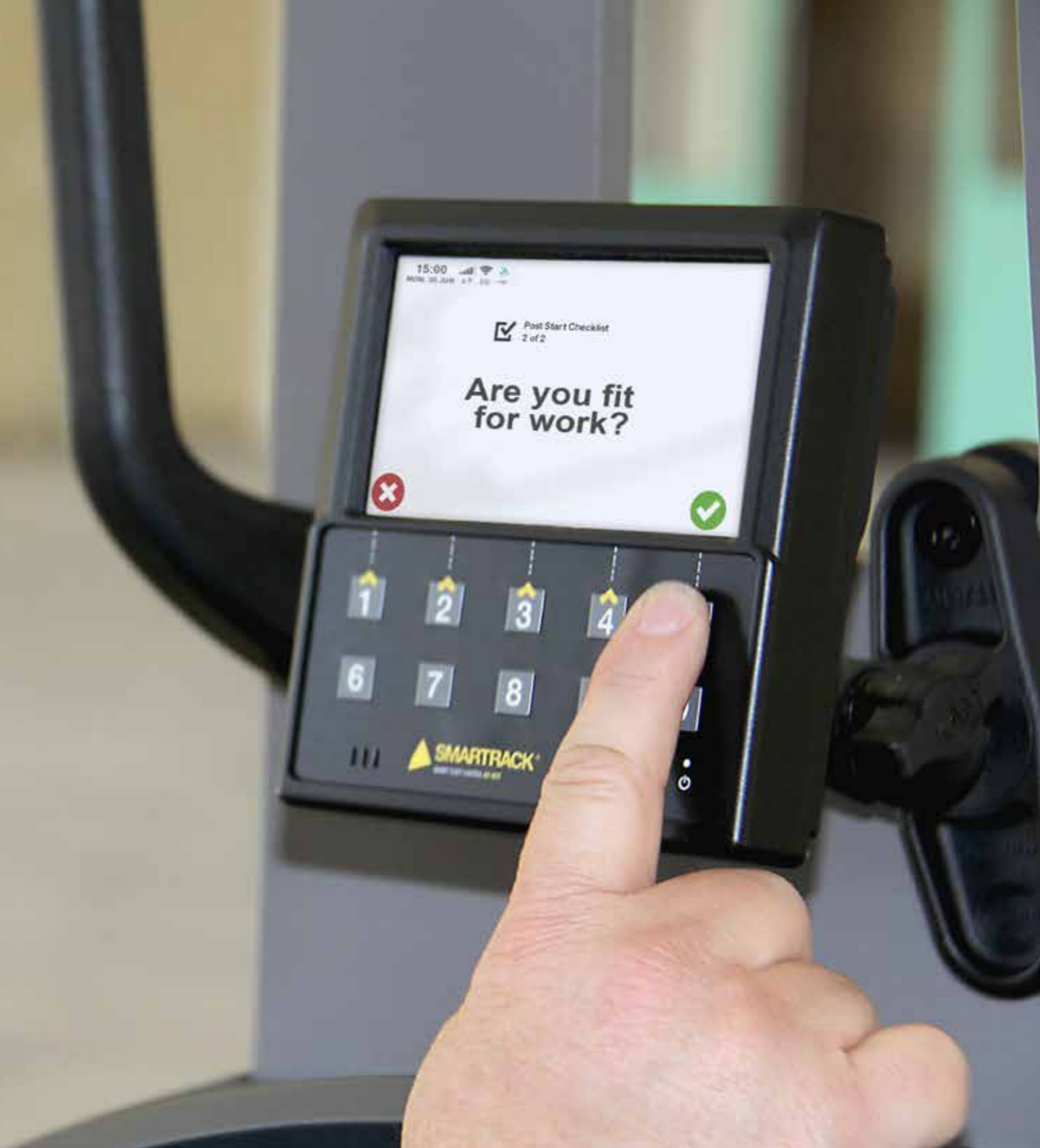
EASIER
COMPLIANCE



COST
REDUCTION



INCREASE
PRODUCTIVITY



KEY FEATURES

GLOBAL
REPORTING

PRE-START AND POST-START
CHECKLISTS

MULTILINGUAL
INTERFACE

OUT-OF-
SERVICE

WEIGHT AND SPEED
MONITORING*

GPS
ZONING

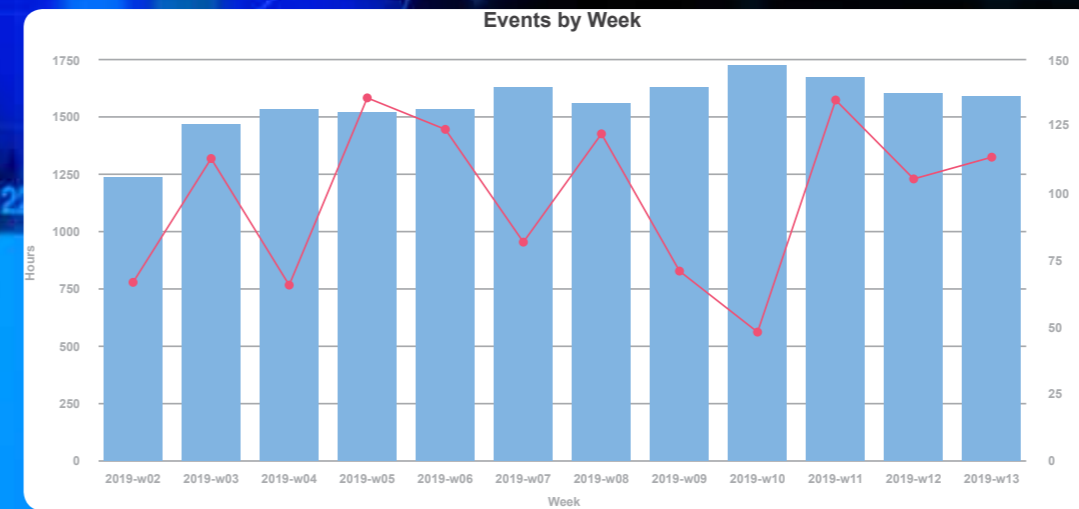
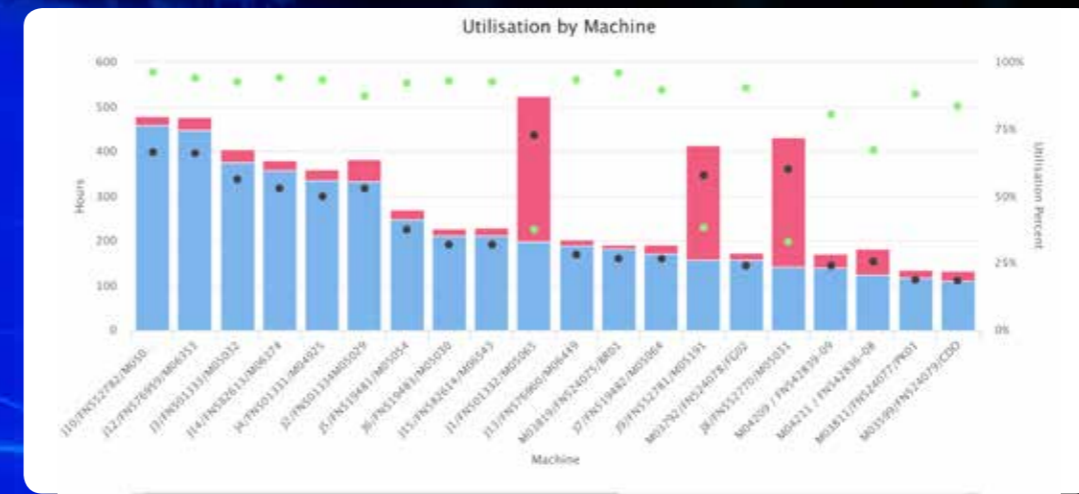
| | | | |
|--|---|---|---|
| <p>BATTERY VOLTAGE</p> <p>Reports on battery voltage</p> <p>Provides operator warnings for low battery</p> | <p>SEAT MONITORING</p> <p>Report operator seat time</p> <p>Auto-logout when operator is absent from seat</p> | <p>LIVE EMAIL ALERTS</p> <p>Checklist, speed, overweight, seat and buckle violations, impact, machine bypass, licence expiry, service due</p> | <p>"MESSAGE OF THE DAY"</p> <p>Deliver relevant safety information to operator's screen</p> <p>Different messages available depending on ongoing work issues</p> |
| <p>SERVICE SCHEDULER</p> <p>Receive notifications for service due</p> <p>Schedules based on hours and calendar</p> <p>Customised notification intervals</p> | <p>OPERATOR ACCESS CONTROL</p> <p>Only licenced operators are able to use the equipment via card reader or keypad</p> <p>Identify licence information, expiry dates, and training requirements</p> | <p>CRITICAL OUTPUT</p> <p>Dry NO / NC contacts available to interface with machine and accessories activated by critical events such as checklist, events, and excess idle</p> | <p>EVENT REPORTING</p> <p>Impact GPS location</p> <p>Machine out-of-service on critical impact</p> <p>Posts incident, root cause analysis comments</p> |
| <p>CONNECTIVITY</p> <p>Cellular/Mobile data communications on 4G/LTE Networks with 3G fallback</p> | <p>WORK INPUTS</p> <p>Capture work time from three inputs such as forward, reverse, and lift</p> | <p>BUCKLE MONITORING</p> <p>Alerts and reports when seat belt is not worn</p> | <p>WEIGHT REPORTING</p> <p>Reports on loaded times, utilisation, lift counts and total weight summaries</p> |

* Weight and speed monitoring may require additional hardware.

GLOBAL REPORTING

SMARTTRACK® CAN DISPLAY DATA FROM ANY MAKE OF MACHINE ANY TIME, ANY WHERE

- ▶ Compare data sets across multiple global sites from a single device.
- ▶ Easily identify events and pinpoint underperforming equipment.
- ▶ Scaled indicators for comparable data between sites.
- ▶ Extensive sort and filter functions to produce relevant data.
- ▶ The ability to export raw data (CSV) and graphical charts into business integration (BI) systems.



ONLINE REPORTING

Cloud-based system with web browser reporting accessible on any smart device.

EASY-TO-READ

Detailed and concise data.

SCALABLE

Highlight desired outcomes to reveal specific data.

CUSTOMISABLE

Filter data based on fields e.g. dates, machines, operators.

Customised information in real-time providing relevant data to management at every level of your organisation.

EXPORT DATA

Export information in multiple formats including CSV, PDF, PNG image or scalable SVG web graphic.



PRE-START AND POST-START CHECKLISTS

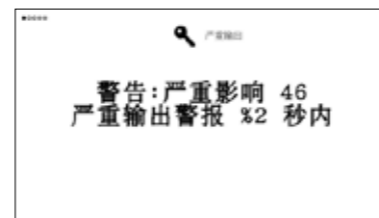
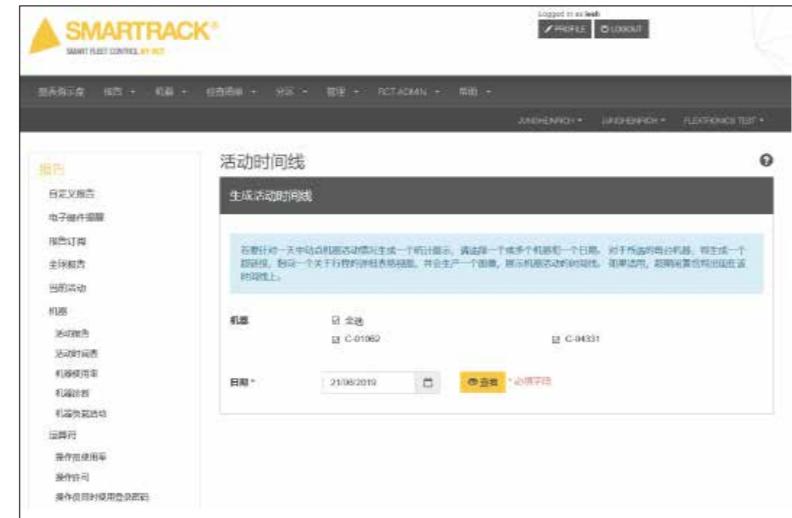
- ▶ Eliminates paper checklists and data input requirements, reduces administration time.
- ▶ Customised checklists can be assigned based on different machine models and operator requirements.
- ▶ Supports multiple shifts with adjustable start times and operator changes.
- ▶ Checklist questions can activate maintenance and critical alerts triggering email notifications to relevant authorised people. Critical alerts will prevent machine use and place the machine use into Out-of-Service. SmarTrack® provides complete customisation of all these settings based on user preferences.
- ▶ All completed checklists can be retrieved at any time through the web portal.
- ▶ Checklists preferences can be altered easily at any time.
- ▶ Checklists can be constantly reordered ensuring operator engagement with the questions.



MULTILINGUAL INTERFACE

SmarTrack® Global is multilingual-enabled for both operators and managers. Site-specific multilingual operator interfaces selectable to each operator ID. Multilingual options for:

- ▶ Website
- ▶ Reports
- ▶ Alerts
- ▶ Checklists
- ▶ “Message of the Day”



OUT-OF-SERVICE

SmarTrack®’s Out-of-Service feature allows machines to be ‘locked’. This is to prevent use of machines which maybe damaged or unfit for use due to unplanned reasons. This feature can also prevent use of machines for planned reasons such as scheduled services.

Key benefits:

- ▶ Eliminated paper tags results in reduced administration costs.
- ▶ System limits machine access to authorised people.
- ▶ Out-of-Service display is automatically applied when a critical event occurs.
- ▶ Prevents use of machines that are due for schedule maintenance.
- ▶ Machines can be remotely placed into Out-of-Service through the web portal. This can be used to manage standby fleets or scheduled machine maintenance.
- ▶ Additional information can be recorded through the web portal allowing for more detailed records to be captured for the event.



| FleetNumber | Department(s) | Category |
|-------------|---------------|-----------------|
| KMT1-1 WM | WASTE MGMT | FORKLIFT 4 TONS |

| Operator | Reason | Time Set | Impact Level | Supervisor | Time Cleared |
|-------------------------------|----------------|----------------------|--------------|------------------|----------------------|
| Muhanad Sharfuddin Bin Zainal | Emergency Stop | 5/04/2019 3:58:14 PM | 1.5 | Saidin bin Yahya | 5/04/2019 4:31:52 PM |

Comments: Enter your comments

| FleetNumber | Operator | Time Set | Reason | DETAIL |
|-------------|--------------------|------------------------|-----------------------|--------|
| KMT MFG-01 | David Prowse | 25/04/2019 11:45:42 AM | Critical Impact | DETAIL |
| KMT MFG-01 | Mohd Fauzi Ameran | 22/04/2019 12:52:11 PM | Critical Impact | DETAIL |
| KMT MFG-01 | Roger Thomson | 6/04/2019 8:09:06 PM | Equipment Malfunction | DETAIL |
| KMT1-1 WM | Muhanad Sharfuddin | 5/04/2019 3:58:14 PM | Emergency Stop | DETAIL |
| KMT1-1 WM | Maria del Carmen | 3/04/2019 10:31:24 AM | Critical Impact | DETAIL |
| KMT1-1 WM | Maria Hernandez | 3/04/2019 10:27:44 AM | Critical Impact | DETAIL |
| KMT1-1 WM | Jing Ying | 3/04/2019 10:24:13 AM | Critical Impact | DETAIL |
| KMT1-14 SNR | Mark Eting | 23/04/2019 3:24:43 PM | Critical Impact | DETAIL |
| KMT1-14 SNR | Oliver Thomas | 23/04/2019 3:15:38 PM | Critical Impact | DETAIL |
| KMT1-14 SNR | George Rodriguez | 17/04/2019 10:42:03 AM | Critical Impact | DETAIL |
| KMT1-14 SNR | Santiago Jose | 9/04/2019 7:19:41 PM | Equipment Malfunction | DETAIL |
| KMT1-14 SNR | Pradip Karki | 5/04/2019 6:18:33 AM | Mishandling | DETAIL |

WEIGHT MONITORING

THE INFORMATION PROVIDED:

- ▶ Utilisation reports with weight monitoring provide additional information about how the machine is utilised including the time spent stationary and travelling with different loads.
- ▶ Reports include the number of load lifts per machine.

FEATURES FOR:

Operator:

- ▶ The operator can tally up multiple weight measurements.
- ▶ The operator can see the number of lifts, overloads and total weight for the trip.

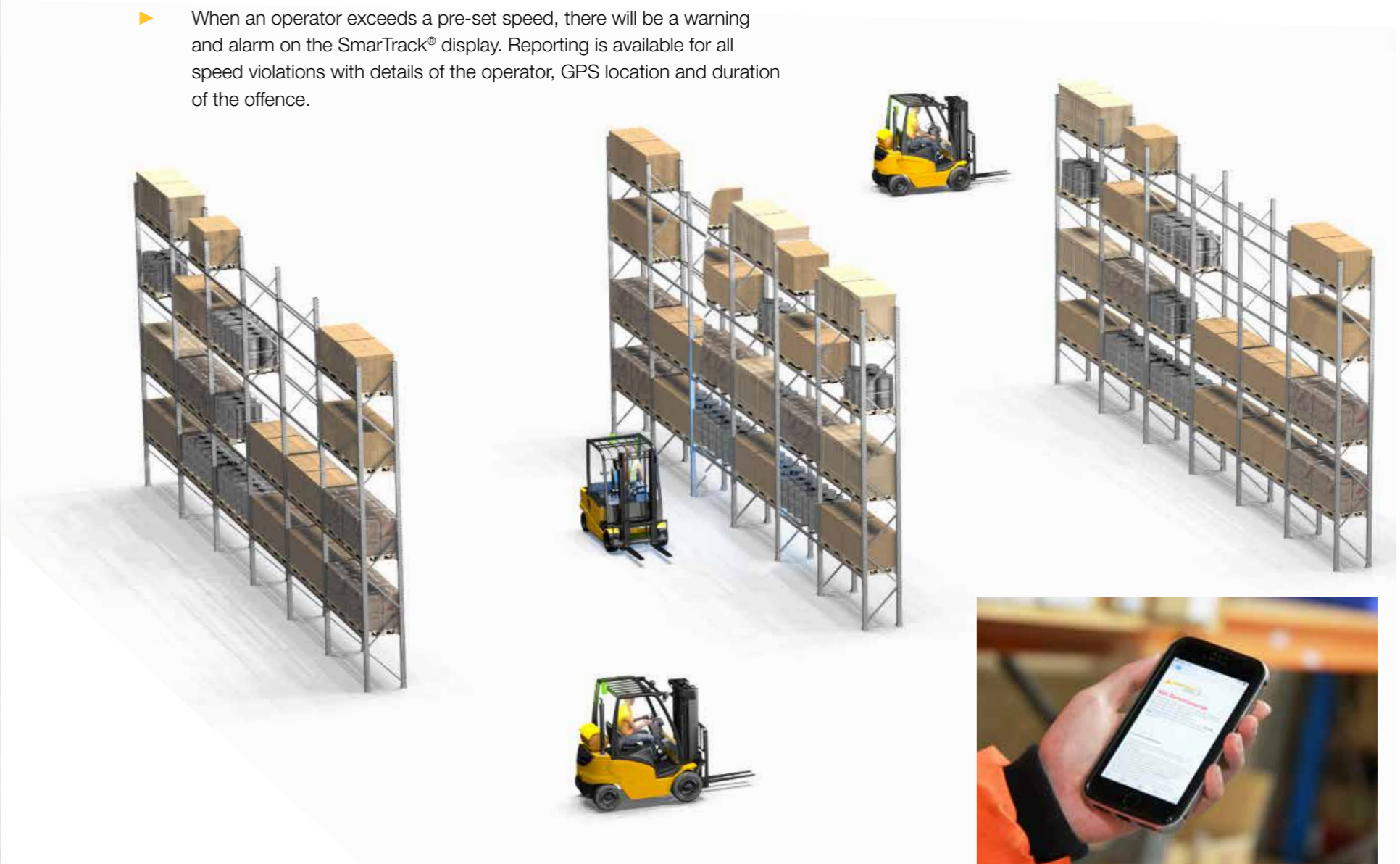
Manager:

- ▶ Reporting of weight-related data is available to monitor fleet effectiveness.
- ▶ Email alerts when there has been a weight overload on a machine.

SPEED MONITORING

THE INFORMATION PROVIDED:

- ▶ The machine speed is displayed on the screen for the operator to view.
- ▶ When an operator exceeds a pre-set speed, there will be a warning and alarm on the SmarTrack® display. Reporting is available for all speed violations with details of the operator, GPS location and duration of the offence.



GPS ZONING

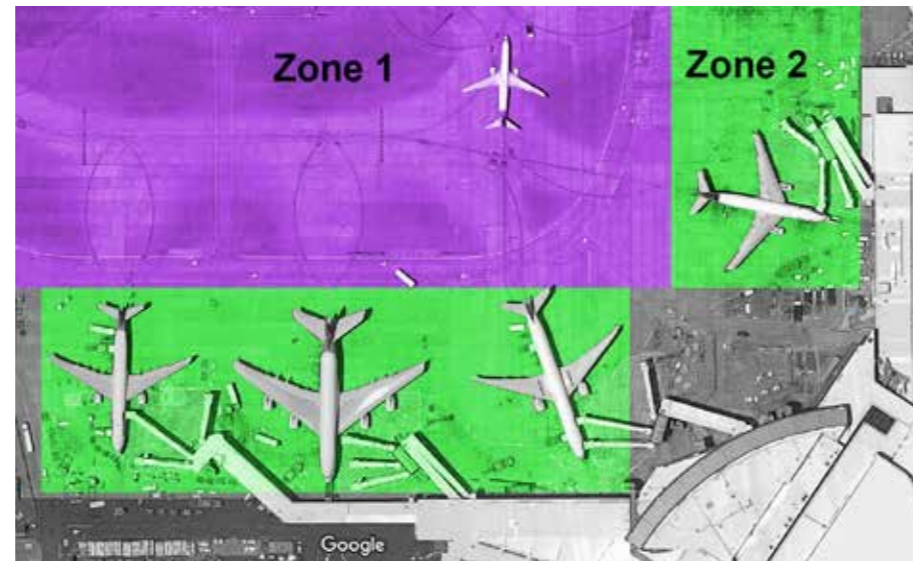
Provides a geofencing solution for equipment requiring speed control within specific areas.

GPS Zoning can cater for 50 different zones per site.

When interfaced with the RCT's Speed Limiter, the system activates different pre-programmed speed settings as required for different areas of operation e.g. in high traffic areas, a slow speed is engaged, whereas a higher speed can be pre-set for more open areas.

Key features/benefits:

- ▶ Suitable for larger 'open' sites.
- ▶ No on-going cost.
- ▶ Flexible - easy to change zone areas.



MORE THAN FLEET MANAGEMENT

Discover RCT's extensive range of solutions to complement and/or enhance your fleet utilisation. These include:



GLOBAL SUPPORT

RCT SUPPORTS CUSTOMERS IN OVER 68 COUNTRIES WORLDWIDE.

RCT is a full service company offering the complete safety and productivity package of skills training, parts supply, technical support and customer service support with all its proprietary products.

RCT has a worldwide distributor and service agent network to supply parts, install, and service its products.



TECHNICAL SPECIFICATIONS – SYSTEM OVERVIEW

SYSTEM OVERVIEW

| | |
|--|--|
| Web Portal Requirements - Internet Access: | An internet connection is required |
| Web Portal Requirements - Browser Version: | We recommend Firefox, Chrome or Internet Explorer 11 or above for the best user experience *Internet Explorer version 9 or below not supported |
| Web Portal Requirements - Browser Plugins: | SmarTrack® does not require any plugins |
| Data: | Data is stored in secure, encrypted cloud infrastructure |
| Security: | Access is secured with SSL certificates and 256bit SHA encryption |
| Data Integrity: | Dual backups are employed with hourly, daily and weekly backup policies |
| Access Control: | Tested to 1000 users (pin number and card access) |
| Hardware Compliance: | Directive 2004/108/EC, Directive 2002/95/EC, Regulation (EC) No 1907/2006 |
| Checklist - Maximum Questions: | Total of 30 in any Category. Categories are created by users - e.g. Gas Forklift, Battery Forklift, Diesel Forklift. |
| Checklist - Run Times: | Configurable to run up to three times per day |
| SmarTrack® - Number of Users: | Unlimited |
| SmarTrack® - Reports: | Available for Daily, Weekly, Monthly email delivery |
| SmarTrack® - Alerts: | Immediate email delivery |
| Supported Languages - Website: | Chinese, English, French, German, Russian, Spanish. (other languages available on request) |
| Supported Languages - Operator Display: | Arabic, Chinese, English, Estonian, Filipino, French, German, Hindi, Indonesian, Khmer, Korean, Latvian, Russian, Spanish, Thai, Ukrainian, Vietnamese. (other languages available on request) |

OPERATOR DISPLAY

| | |
|------------------------------|--|
| Type: | LCD TFT, 480 x 272 pixels |
| Dimensions: | Length: 142mm (5.6") Width: 98mm (3.85") Height: 49mm (1.9") |
| Weight: | 430g (0.95lbs) |
| Operating Temperature Range: | -20°C (-4°F) to 60°C (140°F) |
| Connection Types: | Industrial M12 / 5Pin |
| IP Rating: | IP65 |

CONTROL UNIT

| | |
|------------------------------|--|
| Dimensions: | Length: 135mm (5.3") Width: 115mm (4.5") Height: 35mm (1.4") |
| Weight: | 300g (0.66lbs) |
| Mounting Bracket: | Attachment via two 7mm mounting holes |
| Input Voltage: | Operating 12-80V Maximum 100V |
| Standby Current Draw: | 0.5mA |
| Operating Current Draw: | 6mA Max |
| Operating Temperature Range: | -20°C (-4°F) |
| Connection Types: | Deutsch DTM06-12SC and DTM06-12SD |
| Number of Inputs: | 8 Digital / Frequency / Analogue |
| Number of Outputs: | 8 Digital outputs 12V @ 400mA |
| Circuit Protection: | Short circuit and over-current protected |

COMMUNICATIONS

| | |
|------------|--|
| LTE: | CAT M1 / NB1 Bands: 2, 3, 4, 5, 8, 12, 13, 20, 28 |
| IP Rating: | IP65 |



Discover more:

rct-global.com

smartracksales@rct-global.com

