



# CAPABILITY STATEMENT

AUSTRALIA | AFRICA | CANADA | RUSSIA | SOUTH AMERICA | USA





# TABLE OF CONTENTS

<b>RCT GROUP PROFILE</b>	<b>4</b>
<b>HISTORY</b>	<b>4</b>
<b>ORGANISATION</b>	<b>5</b>
<b>STAFF</b>	<b>6</b>
<b>VALUES AND VISION</b>	<b>6</b>
<b>CLIENTS</b>	<b>6</b>
<b>ACHIEVEMENTS</b>	<b>6</b>
<b>CAPABILITIES</b>	<b>7</b>
Control and Automation	
Fleet Management – Mining	
Fleet Management – Industrial	
Protection Systems	
Specialised Parts	
Customised Solutions	
<b>PROJECTS</b>	<b>8</b>
Barrick Gold’s Porgera Joint Venture in the Enga Province, Papua New Guinea	
Aeris Resources’ Tritton Mine in NSW, Australia	
Eldorado Gold’s White Mountain Mine in China	
Mandalay Resources’ Costerfield Gold Mine in Victoria, Australia	
Alliance Resources’ River View Coal Mine in Kentucky, USA	
<b>SUPPORT NETWORK</b>	<b>9</b>
Service and Maintenance	
Skills Training	
<b>PARTNERS</b>	<b>10</b>
International Service Providers	
<b>DISTRIBUTORS</b>	<b>10</b>
<b>RCT LOCATIONS</b>	<b>10</b>
<b>OH&amp;S</b>	<b>10</b>

## RCT GROUP PROFILE



RCT is an innovative and dynamic Smart Technology company. We are a global leader in smart Guidance, Teleremote and Remote Control automation solutions for the mining industry.

RCT offers a range of intelligent and exclusive technology. We research, innovate, design, manufacture, deliver and support custom technology and service solutions to support clients around the world in sectors including mining, industrial, agricultural and civil.

RCT has traversed all corners of the globe delivering intelligent solutions backed by exceptional support, service and training since the 1970s. Our team has grown to more than 170 committed people working with clients in more than 64 countries worldwide, from Australia to Africa, Russia, Canada, USA and South America.

With more than 45 years of success, our Research and Innovation Hub has consistently focused on creating sustainable value and competitive advantage for our clients. Combining technical insight, with some of the best minds and hands-on experience in the world, RCT creates highly specialised technology for improved operations and custom projects.

RCT is a privately owned group, with headquarters in Perth, Australia. The success of our business is underpinned by our world-class knowledge, insight and know-how; outstanding people; all bound by the integrity and values with which we do business.

We are absolutely focused on providing our clients the advantage of Smart Technology and tangible benefits – increased profitability, productivity and safety.

### RCT provides

- Engineered smart technology solutions
- Research and innovation
- Manufacture
- Installation and commission
- Skills training
- Technical support
- Consultancy and audit
- Personalised customer service
- Parts supply

### HISTORY

RCT's history is extensive with more than 45 years' experience in the industry. The business began in the 1970s with the creation of Muirhead® Protection systems which would improve and protect machines operating in harsh mining conditions. Over time it evolved to encompass four more brands including, the ControlMaster® automation and remote control solutions, EarthTrack® Mining Fleet management solutions, AusProTec™ and SmarTrack® industrial solutions all of which are distributed on a global scale to help clients increase productivity, safety and profitability.

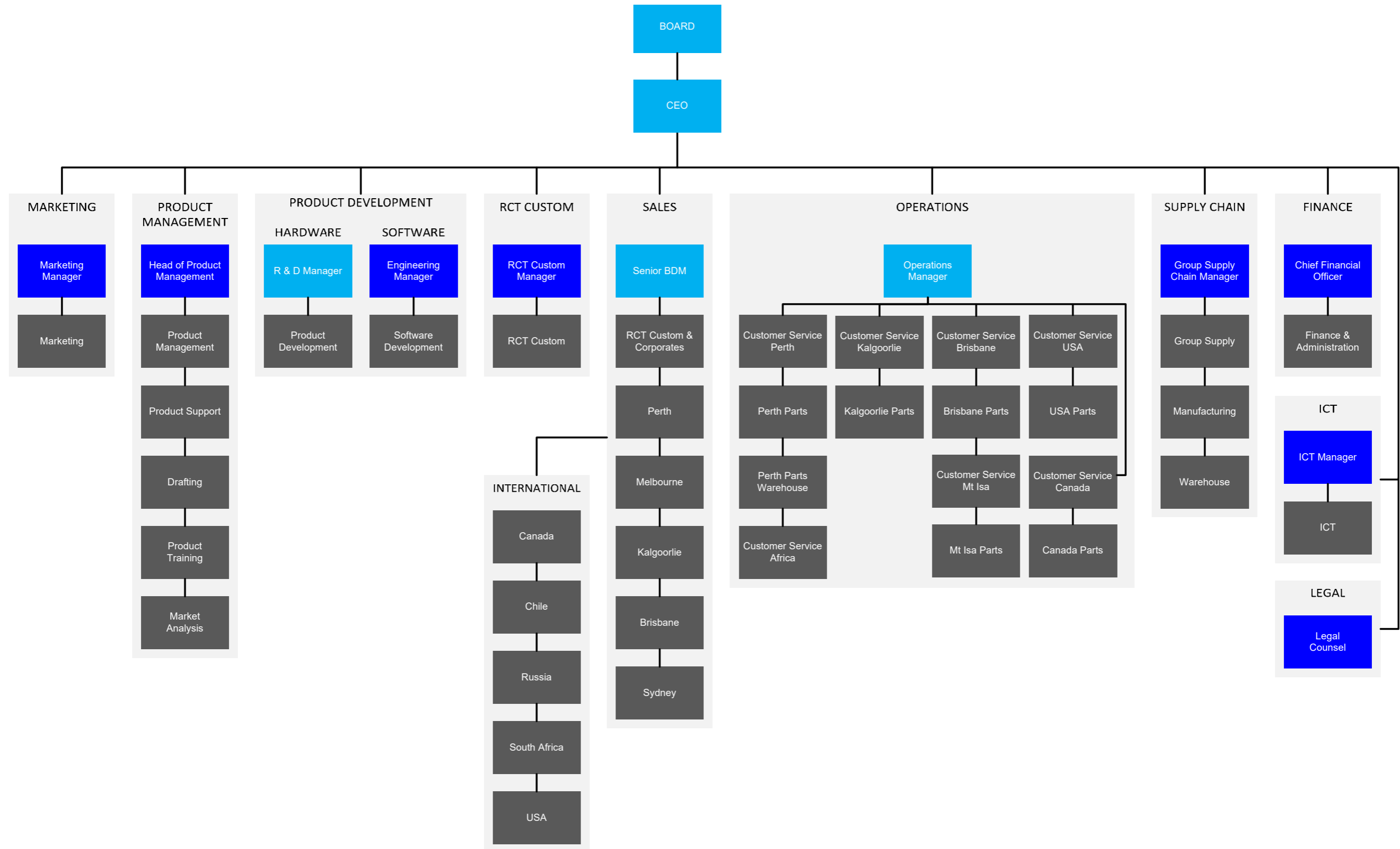


# ORGANISATION

RCT is an international group with solutions spanning five industry proven brands that are now distributed globally to improve productivity, safety and deliver overall measurable business improvements in both the mining and industrial sectors.

Since it was founded in 1972, RCT has established an extensive network of branches throughout Australia and the world, including, Africa, USA, Canada, Russia and South America.

The company's head office is located in Perth, Western Australia.



## STAFF

RCT recognises our staff is our main asset; it's the talent, dedication and hard work of the entire team that makes the company a success. Every role in the business is integral to the business, therefore the company invests in its employees and ensures it creates a space in which staff can reach their full potential.

This development has allowed the company to provide opportunities and promotions from within the organisation resulting in a skilled, high-performing cohesive and loyal team culture. Good proportions of the company's staff started their careers as apprentices and have established life long careers after attaining senior positions with the company. As a result, the company's retention of employees is impressive with many remaining at the company for 20+ years.

## VALUES AND VISION

RCT's vision is to deliver Smart Technology – the right technology for the right application – to benefit our clients' business. Our values encapsulate how we do business:

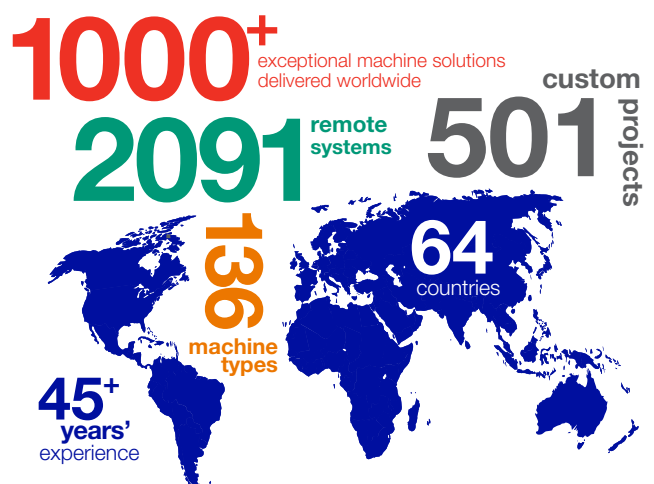
- We operate anywhere in the world, with commitment and integrity: we do what is right and we do what we say we will do.
- We observe, listen, problem solve and collaborate to provide unrivalled client service.
- We take ownership and accountability of our actions. We are pro-active and professional. Our enthusiastic 'can-do' attitude is world-renowned.
- We work actively, intensively and collectively. Personal and professional empowerment is encouraged. We cooperate as a team and thrive on going the 'extra mile'.
- We are creative. We believe in continuous improvement. We respond to the market and collaborate to bring about innovations that have purpose.
- We respect ourselves, each other and our clients. We are sensitive to cultures. We foster and grow potential, bringing shared value to places we work.

## CLIENTS

RCT's client base spans worldwide, having worked on projects in more than 64 countries and counting. All of RCT's solutions are built to withstand the harshest of conditions making them suitable for all circumstances. RCT caters each solution to individual clients' needs to ensure the best outcomes.

## ACHIEVEMENTS

- ✓ One of the first remote control companies in the world to remote a dozer in the late 80s.
- ✓ Retrofitted a 15-year-old D8R with ControlMaster® Line-of-Sight when other companies deemed the task virtually impossible.
- ✓ RCT has installed more remote controls on more dozers, loaders, excavators and underground loaders across different models of mobile machines than any other company.
- ✓ Only company in the world with a Haul Truck Guidance solution that can be adapted to any make or model machine.
- ✓ 2016 Innovative Mining Solution Winner for ControlMaster® Independent Guidance.
- ✓ 2017 Austmine's Champion of Innovation award.



# CAPABILITIES

RCT's product offering is extensive, spanning over five proven sub brands to cater to the needs of clients' worldwide.



## Control and Automation

RCT's ControlMaster® range of solutions are proven within the industry to maximise profits from mobile machines. There is a solution to cater for every application, ranging from Line-of-Sight, to Teleremote, Guidance and Independent Guidance. Our innovative technology takes the stress out of operating machines, reduces damages and helps to increase productivity and profitability. The ControlMaster® range, like all of RCT's solutions can be fitted to any mobile machine, regardless of make or model.



## Fleet Management – Mining

RCT's EarthTrack® Fleet Management system is designed to deliver relevant accurate machine data that will empower fleet users and suppliers to make informed decisions when managing their fleet to ensure it's always operating at peak performance. EarthTrack® is available for all machine types and brands and will capture data to fully assess machine and operator performance in real-time, presenting intelligent reports that improve fleet productivity.



## Fleet Management – Industrial

SmarTrack® is an innovative solution leading the way in the industrial market. It's providing relevant and detailed information in an easy-to-read format to a smart device. SmarTrack® is transforming the way in which companies approach industrial fleet management. SmarTrack® can be installed on all mobile and stationary equipment, regardless of make or model.



## Protection Systems

Muirhead® Protection Systems are designed ensure clients get the most out of their mobile mining investments. These solutions simply attach to mobile equipment to reliably prevent premature failures and unexpected breakdowns, resulting in a more profitable mining operation.



## Specialised Parts

RCT's AusProTec™ range offers clients a variety of specialised electrical solutions designed and manufactured to improve the productivity and reliability of mobile mining, earthmoving and industrial equipment. The range is extensive and includes rear vision camera systems, gauges, plugs, fittings, alarm systems, connectors, hydraulics, switches, enclosures and much more.

## Customised Solutions

RCT Custom division specialises in bespoke solutions that defy our off-the-shelf offering. The team can partner with a client to design, manufacture and install fully-customised solutions. Our goal is to find the answers that result in increased profitability, productivity and safety for our client. RCT Custom has the resources and depth of expertise to solve a client's problem, regardless of size or scope of the project.

## PROJECTS

The following is a sample of projects listing that demonstrates the outcomes experienced with RCT's solutions.

### Barrick Gold's Porgera Joint Venture in the Enga Province, Papua New Guinea



**Solutions:** ControlMaster® Line-of-Sight  
ControlMaster® Teleremote  
ControlMaster® Guidance

**Outcome:** "This change is obviously safer for the operator but also provides the operation with increased utilisation as we can now continue working over shift change resulting in an operational efficiency improvement of 16 per cent."

### Aeris Resources' Tritton Mine in NSW, Australia



**Solutions:** ControlMaster® Teleremote  
ControlMaster® Surface Control system

**Outcome:** Record tonnages achieved

### Eldorado Gold's White Mountain Mine in China



**Solutions:** ControlMaster® Teleremote

**Outcome:** "The perceived benefits in productivity were estimated between 25-30 per cent, meaning the system would pay for itself in less than six months."

### Mandalay Resources' Costerfield Gold Mine in Victoria, Australia



**Solutions:** ControlMaster® Teleremote  
ControlMaster® Guidance

**Outcome:** RCT's systems increased ore recovery to 95 per cent in blind uphole stopes at the Costerfield mine site.

### Alliance Resources' River View Coal Mine in Kentucky, USA



**Solutions:** ControlMaster® Line-of-Sight ATX2200

**Outcome:** RCT was able to retrofit a remote control to a 15-year-old machine which was deemed virtually impossible by other companies. Being able to execute this task saved the company from purchasing a new machine. The machine needed remote control technology to meet safety standards enforced by the MSHA.



# SUPPORT NETWORK

## Service and Maintenance



RCT provides a maintenance service for its ControlMaster® Remote Control systems and other proprietary products. Regular servicing of equipment ensures remote equipment remains in a safe operating condition and up to RCT Original Equipment Manufacturer (OEM) standards.

### National and International Distributor & Service Agent Network

RCT has an ever-expanding global service network, aimed at providing local support to clients using local people, who are readily available in the event of any emergencies.

RCT is continually expanding its service network to ensure clients in isolated areas have access to local support.

### Fleet Service

RCT provides fleet servicing on a contract or permanent basis for all equipment installed with RCT OEM proprietary products, including ControlMaster®, Muirhead®, EarthTrack® and AusProTec™.



## Skills Training



RCT provides specialised skills training to empower the operators to ensure a safe operation by carrying out correct maintenance and repair procedures for all of our products. Training is delivered both on and off-site and is executed with the help of practical demonstrations to provide hands-on experience. All participants who complete training receive a globally recognised certificate from RCT's Certified Skills Training program.

## PARTNERS

### International Service Providers

Vostochnaya Technica LLC - Russia

Power Train Technologies- Chile

Borusan Makina Kazakhstan- Kazakhstan

## DISTRIBUTORS

Vostochnaya Technica LLC – Russia

Le Price International Corporation- Philippines

Fasser SpA, Chile – Chile

Fasser Overseas – Perú

Reliable Industries – North America

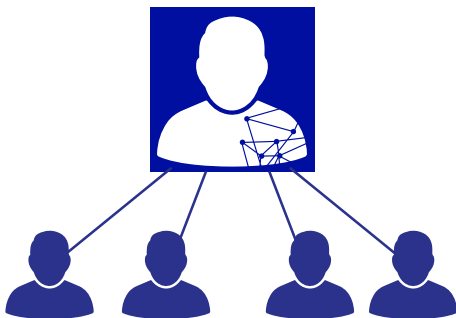
PT PAZ ACE Indonesia

T & H Parts, Inc. – North America

Western Suburbs Auto Electrics – Queensland

Trysome – Africa

Borusan Makina Kazakhstan



## RCT LOCATIONS

RCT Perth – Head Office

Unit 2-5/511 Abernethy Rd, Kewdale WA 6105

RCT Perth

Unit 1/511 Abernethy Rd, Kewdale WA 6105

RCT Kalgoorlie

24 Percy Rd, Kalgoorlie WA 6430

RCT Brisbane

Unit 1 / 27 Flinders Parade, North Lakes QLD 4509

RCT Mt Isa

1A Ryan Rd, Mt Isa, QLD 4825

RCT Africa

Johannesburg, South Africa

RCT USA

7174 South 400 West, Suite Midvale, Utah, 84047

RCT Canada

3307 Hwy, 144, Chelmsford, Ontario, POM 1L0

RCT Russia

Moscow, Russia

RCT South America

Santiago, Chile

## OH&S

Safety is embedded in RCT's values; the group recognises the occupational health safety (OH&S) of all employees and workplace visitors including customers and contractors is of paramount importance.

Therefore the company is fully committed to ensuring the OH&S are met to create and maintain a safe working environment by managing the risks associated with their day-to-day work-related activities.

RCT recognises that in order to ensure and maintain a safe workplace, we must provide information, instruction, and training to employees as necessary to enable them to perform their work in such a manner that they are not exposed to hazards.

Our commitment to continuous improvement ensures all employees are kept up-to-date with legislation, including all codes and guidelines. RCT complies with the Occupational Health and Safety Act 1984 and the Occupational Health and Safety Regulations 1996.



Discover more: [rct-global.com](http://rct-global.com)

[sales@rct-global.com](mailto:sales@rct-global.com)

AUSTRALIA: +61 8 9353 6577  
AFRICA: +27 83 292 4246  
CANADA: +1 705 590 4001  
RUSSIA / CIS: +7 (910) 411 11-74  
SOUTH AMERICA: +56 9 3417 0004  
USA: +1 801 938 9214

